

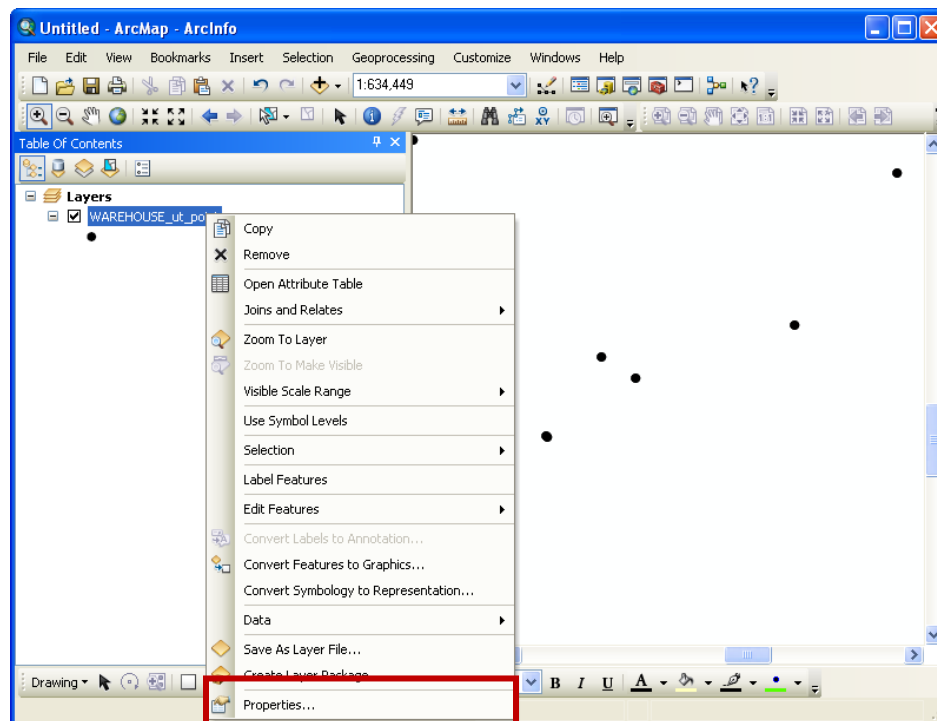
## Using Your Own Symbols in ArcMap 10

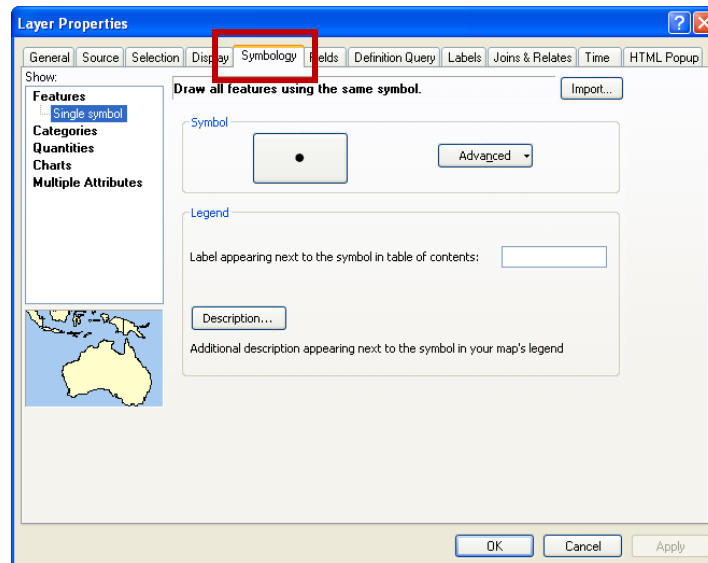
### Step 1 – Create and save your image as either a .bmp or .emf

Do this in your program of choice. Don't use high resolutions as it will make things slower. Save it in the directory/folder where project data is located.

### Step 2 – Open Symbol Window

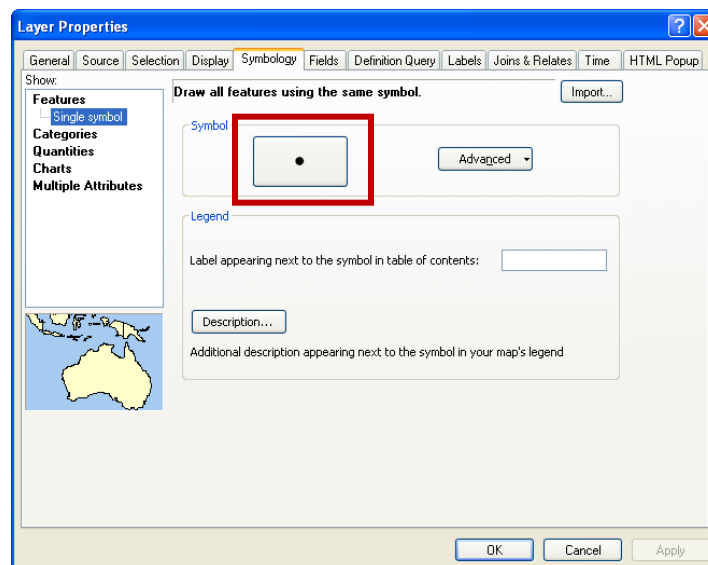
In the **Table of Contents (TOC)** – right click on the layer that you want to change – choose **Properties** – In that window select the **Symbology** tab.

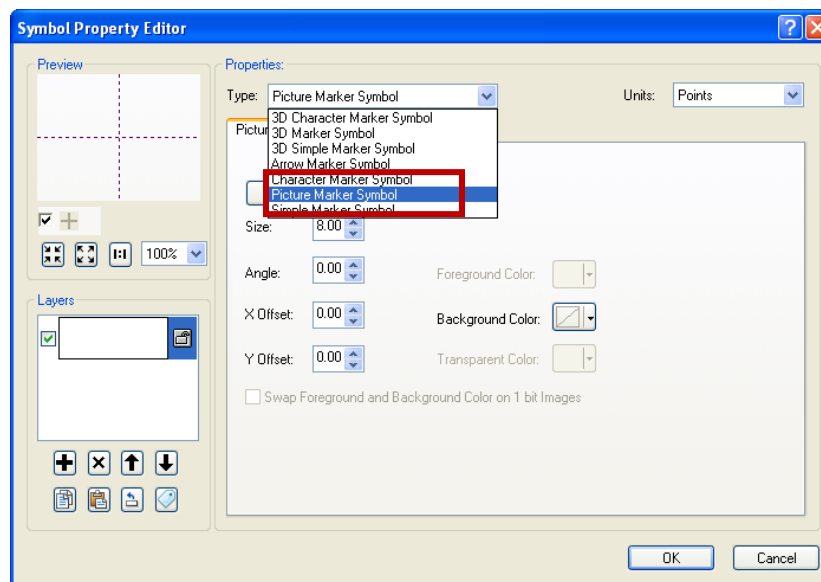
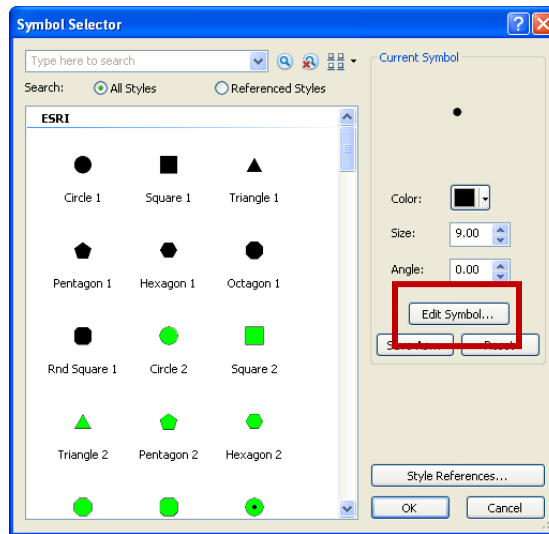


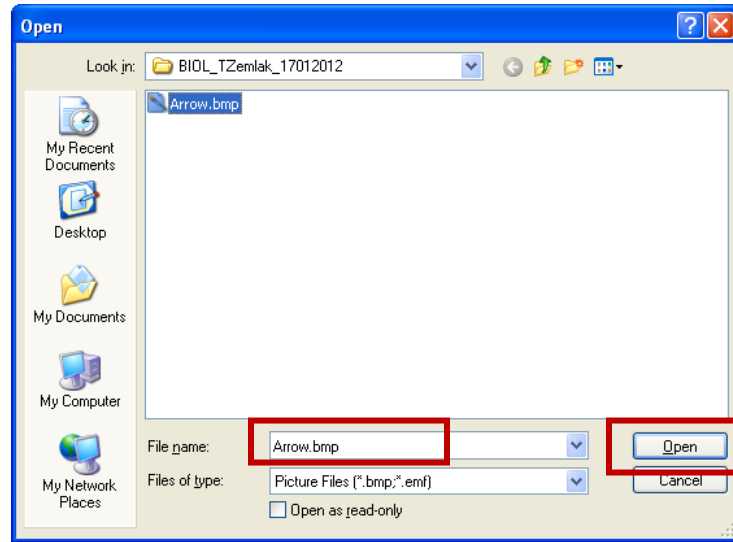


### Step 3 – Edit the Current Symbol

Double click on the symbol – in the new window select **Edit Symbol** – this brings up another window, from this window select the **Type** as **Picture Symbol** – select the directory/folder and then file of where the image was saved from step 1 click **Open** button – click **OK** button to exit **Symbol Property Edit** window – then click **OK** to exit the **Symbol Selector** window – click **OK** to **Layer Properties** window.







The points should now be symbolized with your symbol!

**\*\* For more information please see the ArcGIS Resource Centre**

<http://help.arcgis.com/en/arcgisdesktop/10.0/help/index.html#//00s600000006000000.htm>