


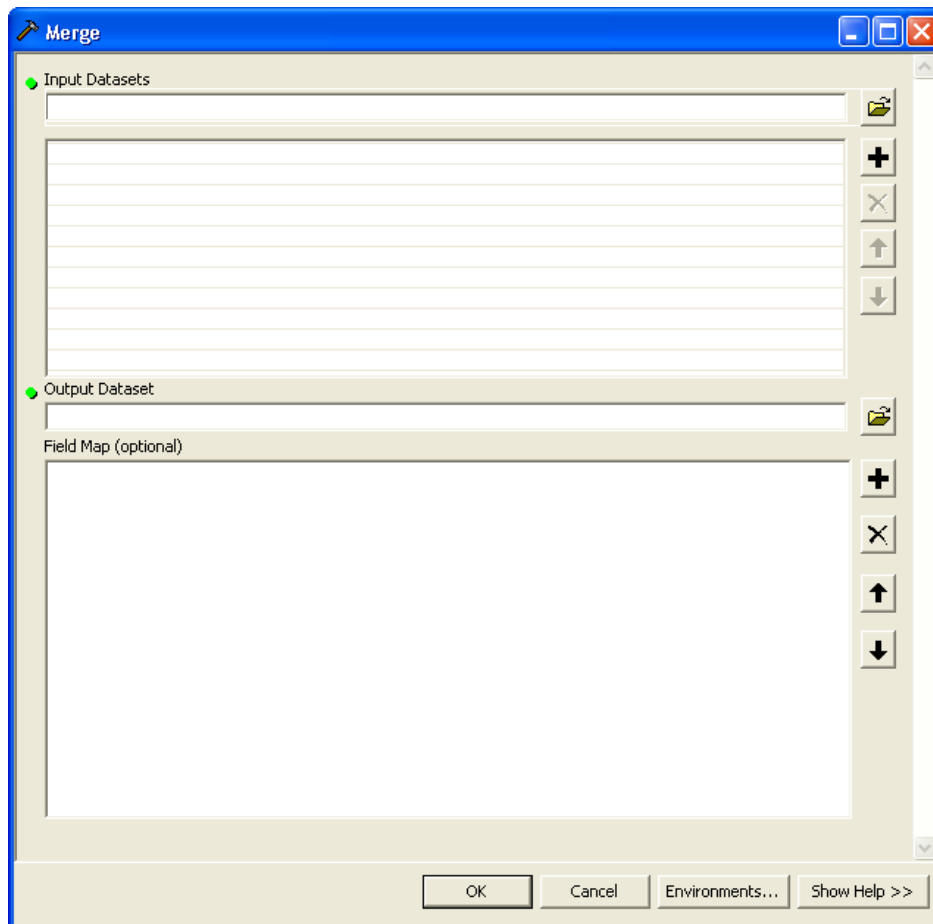
[http://webhelp.esri.com/arcgisdesktop/9.3/index.cfm?id=1829&pid=1824&topicname=Merge_\(Data_Management\)](http://webhelp.esri.com/arcgisdesktop/9.3/index.cfm?id=1829&pid=1824&topicname=Merge_(Data_Management))

Merge – Combines input features from multiple input sources (of the same datatype) into a single, new, output feature class. The inputs may be point, line, or polygon feature classes or tables.



Where do I Find it?

- Open ArcToolbox 
- Data Management Toolbox –General Toolset – Merge



Parameters:

Input Datasets – The Input point, line, or polygon feature classes or tables that will be merged together.

Output Dataset – The output point, line, or polygon feature class or table that contains all merged input features.

Field Map – The fields and field contents chosen from the inputs. Each of the unique input fields will be listed in the Field Map window when it expanded, you will see a list of all the input occurrences. New fields can also be added. For each Field Map, you can add, rename, or delete output fields as well as set properties such as data type and merge rule.

** The default is that all unique fields from all inputs are present in the output.*

Hints:

Input data doesn't need to be adjacent. It can overlap or not touch at all.

The inputs must all be the same type (point, line, or polygon)

Files of the same name can't be merged.