

Installing ArcGIS 10.5 for Windows

1.0 Install Virtual Private Network (VPN)

You will be able to use VPN to connect to the Dalhousie Campus Network from any Internet Service Provider. Once connected your machine will operate with a Dalhousie IP address through an encrypted tunnel and will have access to any network services that would normally be limited to the campus.

***Note:** Using ArcGIS requires a connection to the Dalhousie Network for those off campus this requires VPN. The VPN must be connected every time ArcGIS is used.

VPN is available through the Dalhousie Information Technology Services:

<http://www.dal.ca/dept/its/its-services/software-download.html>

There are multiple versions of VPN depending on the operating system you are using, please ensure you are using the correct version for your machine. If you need help with the VPN installation then please contact the help desk.

<https://software.library.dal.ca/?helpDesk>

2.0 Installing ArcGIS 10.5

2.1 Download the **ArcGIS 10.5** software to your Windows machine.

<https://software.library.dal.ca/?page=2>

This may take some time as the file is quite large.

2.2 If installing from home connect to VPN software.

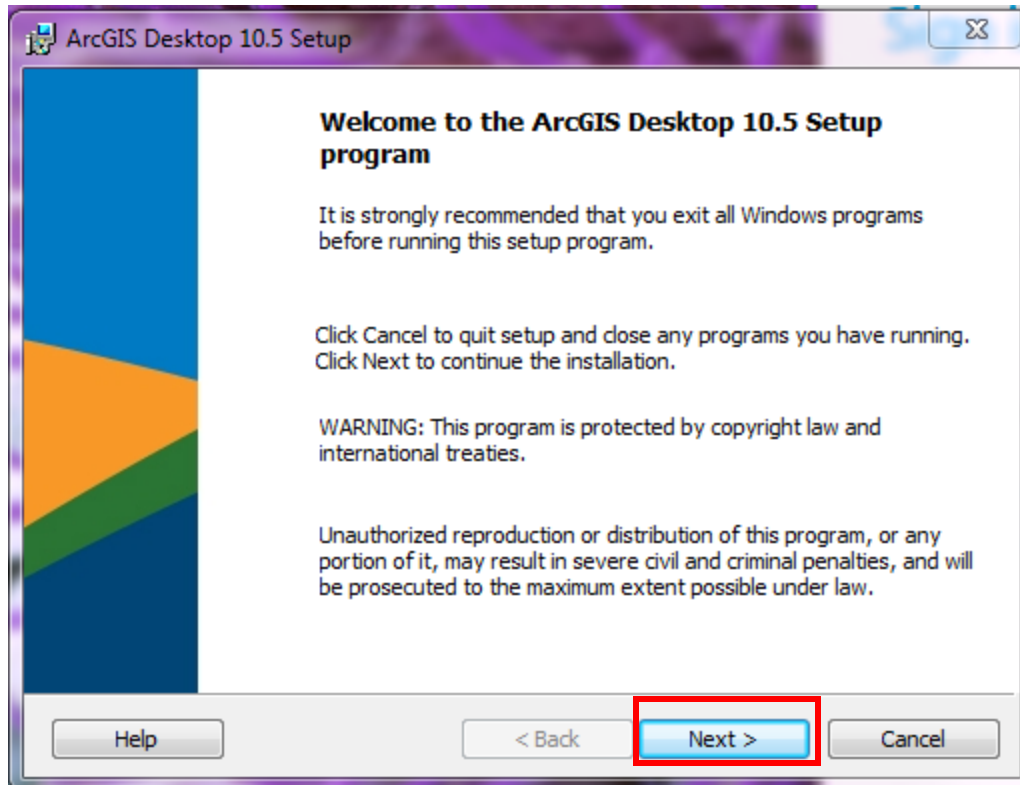
2.3 Double click on the “**Download Now**” button. If there is a security warning click **Run**.

2.4 Destination Folder for files – click **Next**.

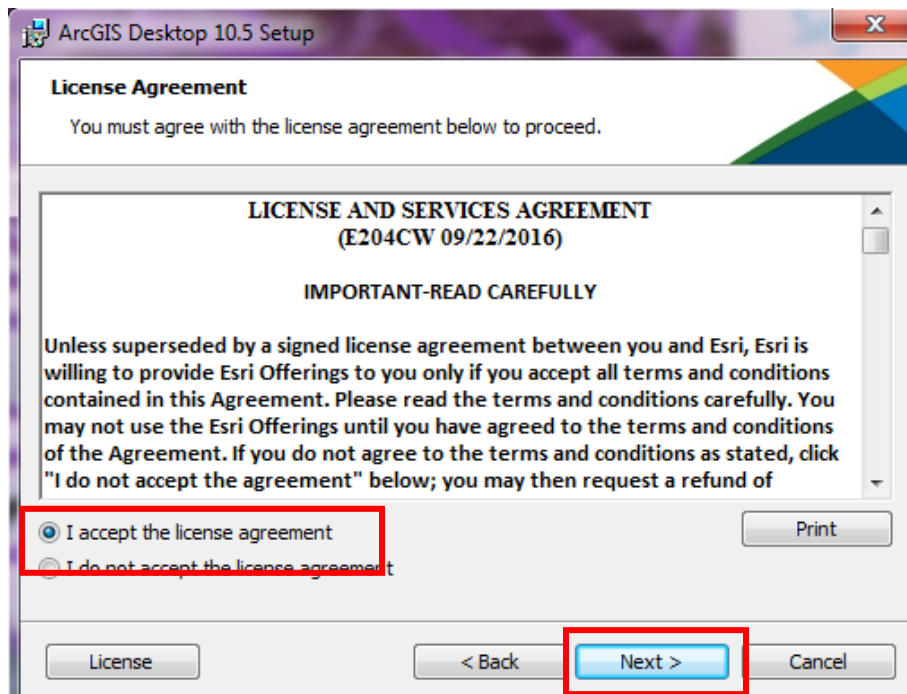
2.5 Installation files have successfully extracted to your computer. Make sure check box to Launch the setup program is checked. Click Close button.

2.6 A Users Account Control window may appear. Click **OK/Run** to start program loading.

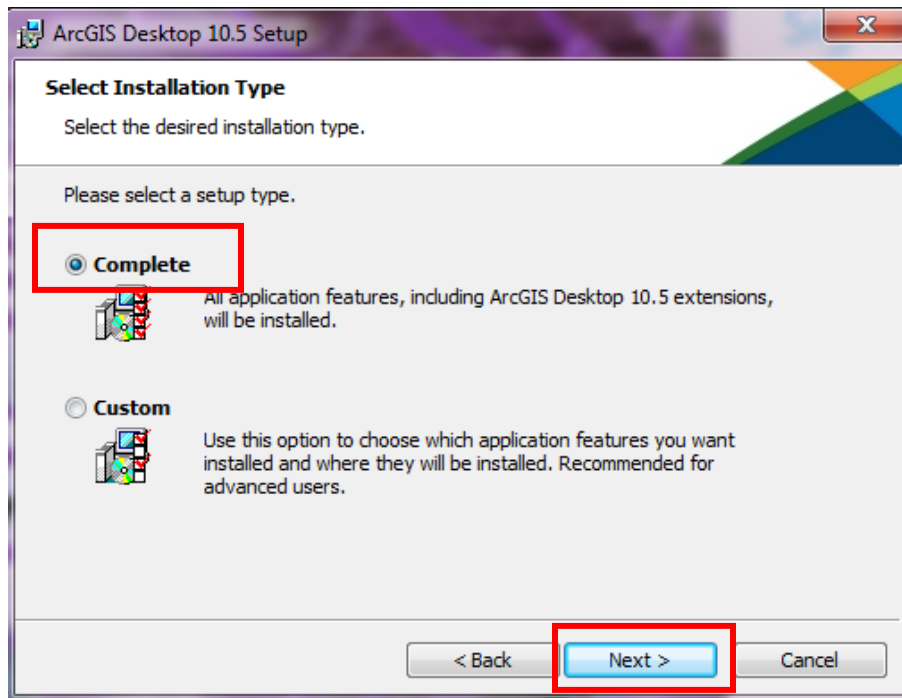
2.7 Welcome to ArcGIS 10.3.1 Desktop Setup program – click **Next** button.



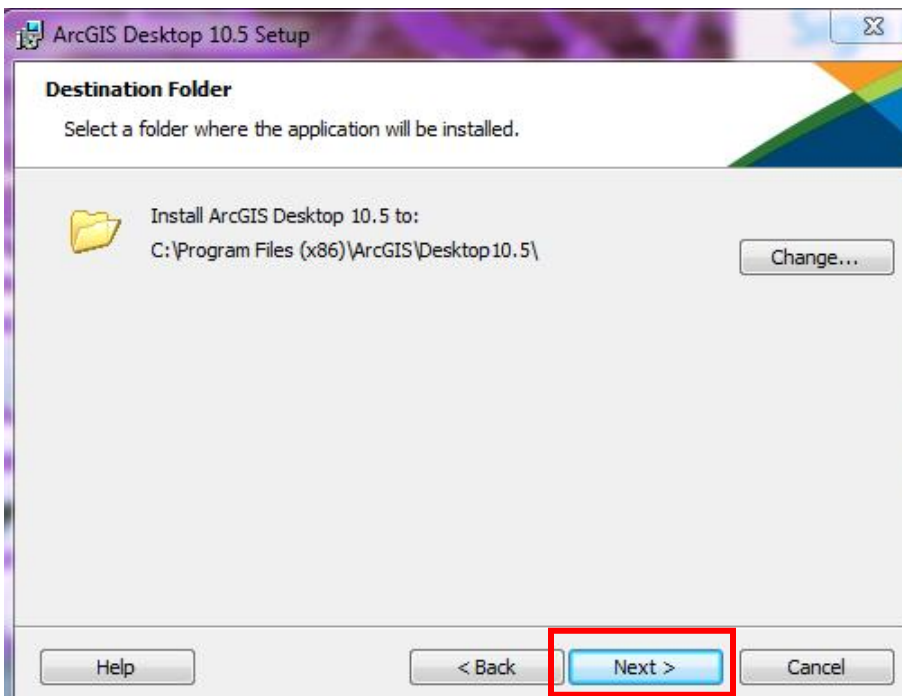
2.8 License Agreement screen. Read and **click** then **I accept** button and then click the **Next** button.



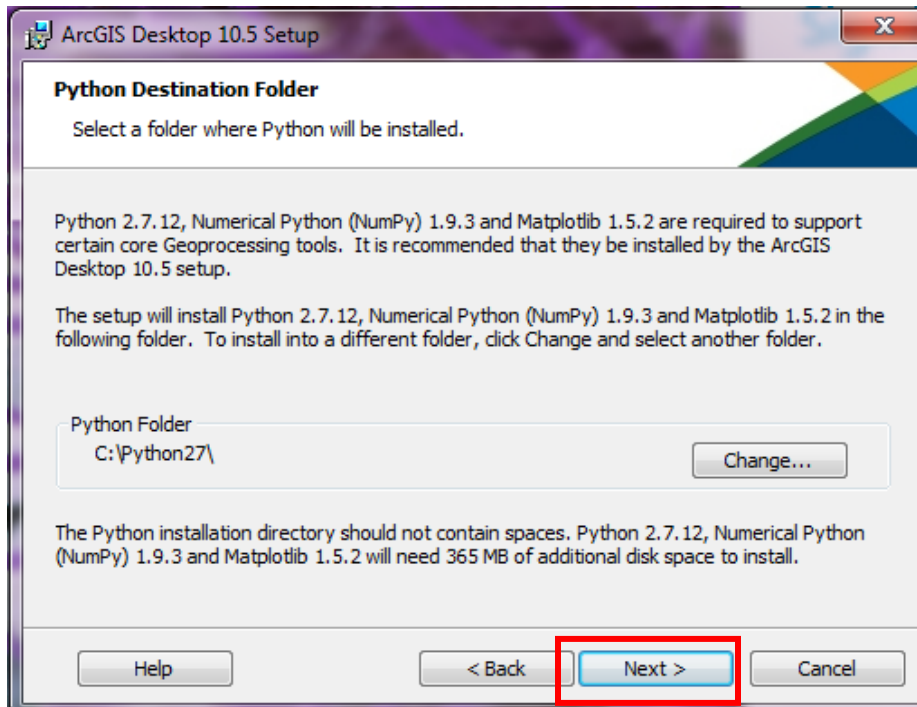
2.9 For the Type of Installation screen, choose **Complete** option and the **Next** button.



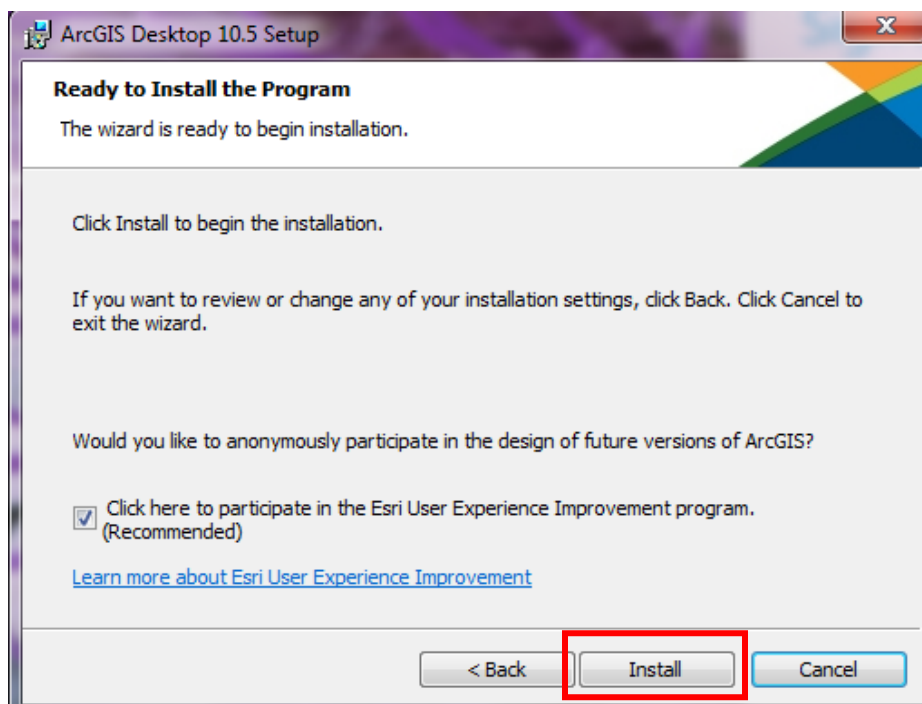
2.10 Destination Folder screen, choose **Next**.



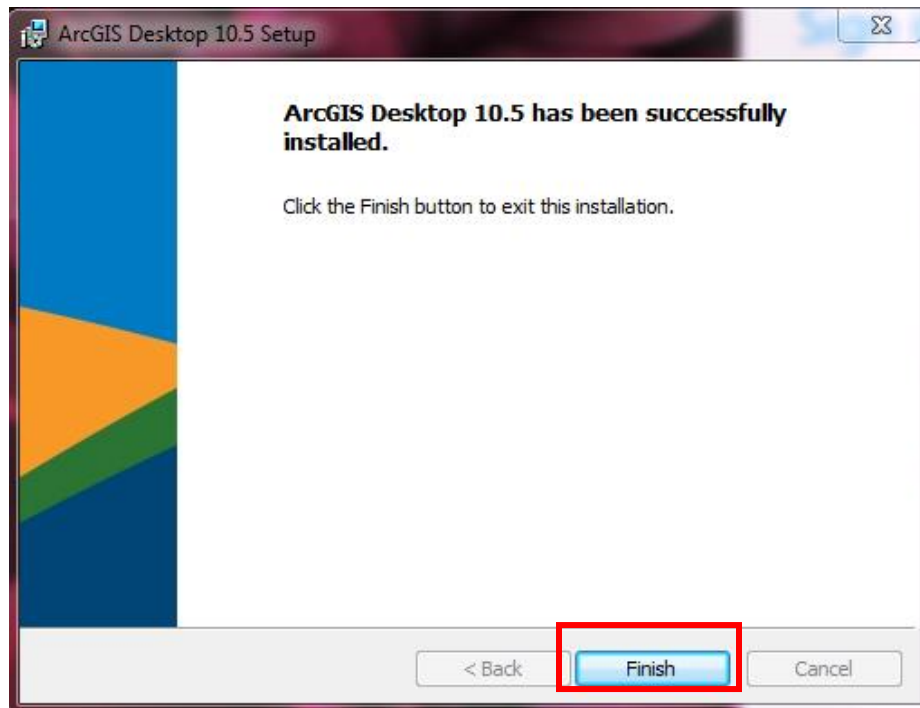
2.11 Python Destination Folder, accept default and click **Next**.



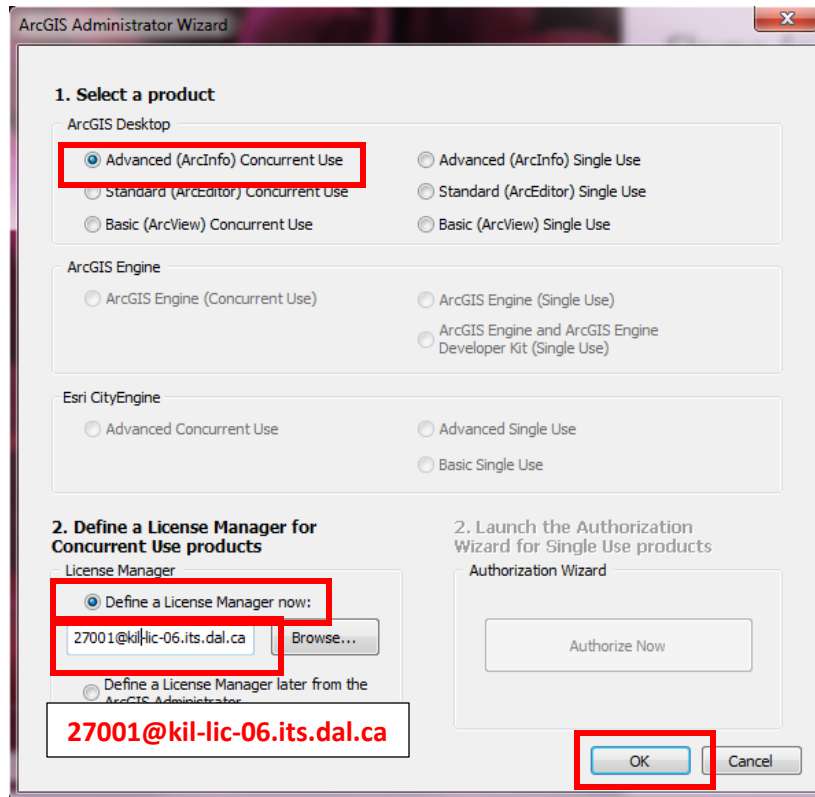
2.12 Ready to install screen appears click **Install** button. This will likely take several minutes to complete.



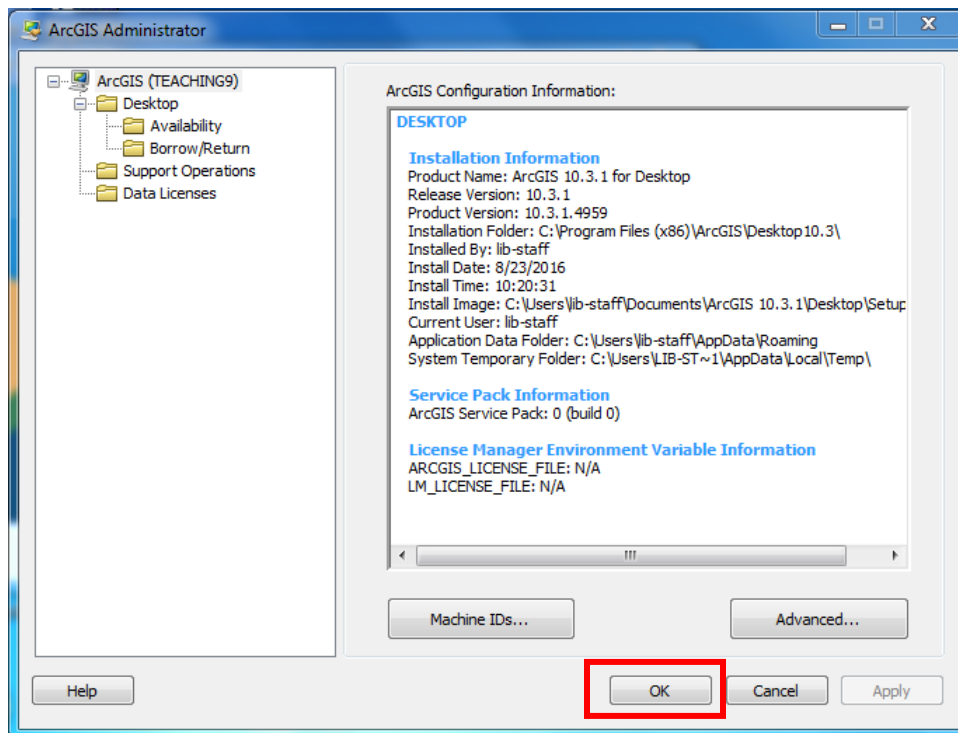
- 2.13 ArcGIS 10.5 for Desktop has been successfully installed screen appears. Click the **Finish** button.



- 2.14 Administrator Wizard window appears. For the **Select a product section** make sure **Advanced (ArcInfo) Concurrent Use** is selected then in the second section **Define a License Manager for Concurrent Products** click **Define a license Manager Now** and then type in 27001@kil-lic-06.its.dal.ca and click the **OK** button.

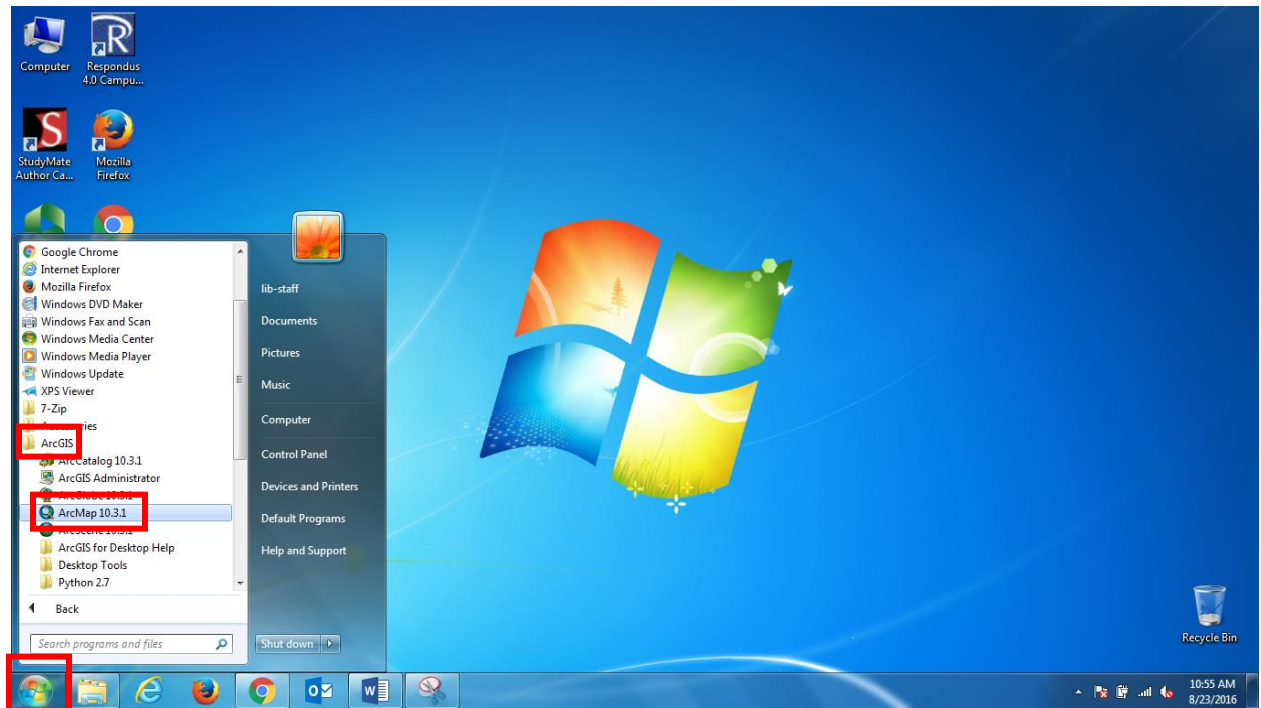


2.15 The ArcGIS Administrator window will appear. Click **OK** button.



3.0 Start ArcMap Desktop

- 3.1 Go to the Windows **Start Icon** in the lower left corner of screen (if running Windows 7 or lower) – **All Programs – ArcGIS – ArcMap 10.5**



4.0 Troubleshooting

- 4.1 If you receive a license error please ensure that you are connected to the VPN (ArcGIS will not run unless you are connected to the Dalhousie network either directly (WPA2) or remotely (VPN)).
- 4.2 If you are still encountering problems please contact the GIS Centre. You can email us at gis@dal.ca or you can drop in. We are found on the 5th floor of the Killam Library, go into Special Collections and turn left, you will see a glass door – Come on in (M-F 9-4).