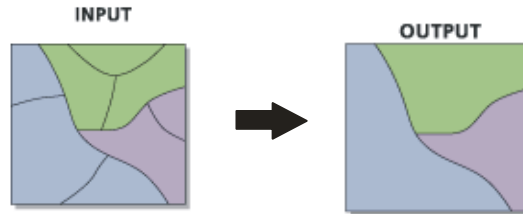


<http://webhelp.esri.com/arcgisdesktop/9.3/index.cfm?id=1840&pid=1837&topicname=Dissolve> (Data Management)

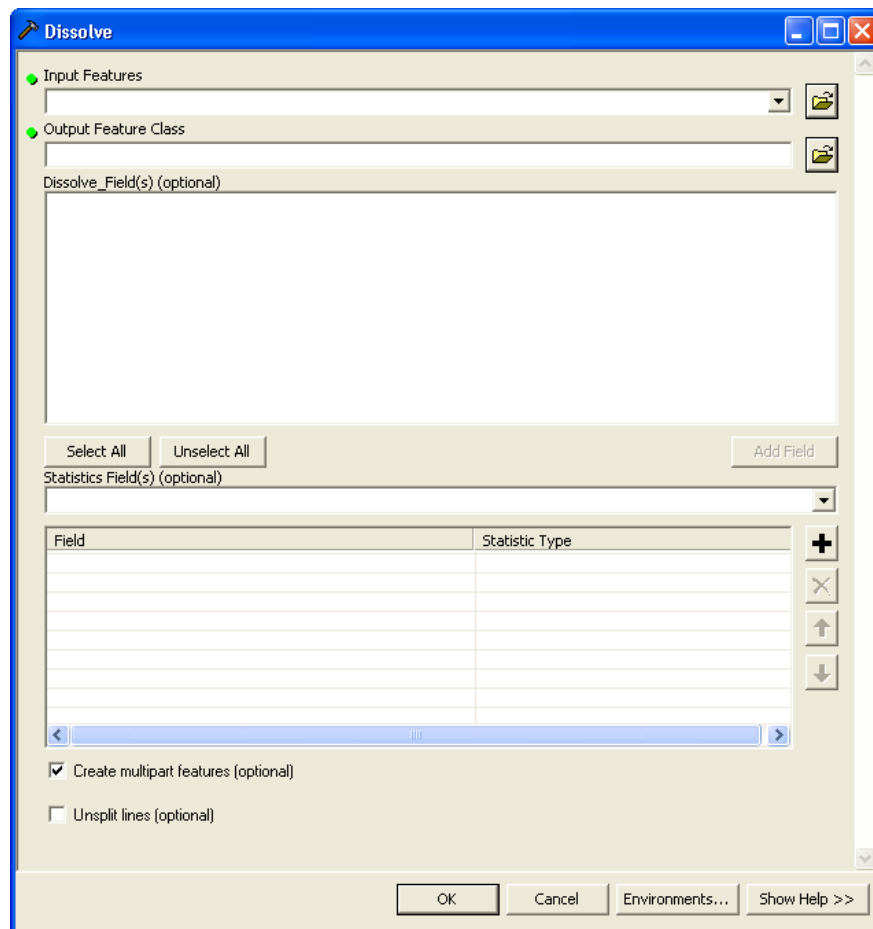
Dissolve – Aggregates features based on specified attributes. It removes internal boundaries.



Where do I Find it?



- Open ArcToolbox.
- Data Management Toolbox –Generalization Toolset – Dissolve



[http://webhelp.esri.com/arcgisdesktop/9.3/index.cfm?id=1840&pid=1837&topicname=Dissolve \(Data Management\)](http://webhelp.esri.com/arcgisdesktop/9.3/index.cfm?id=1840&pid=1837&topicname=Dissolve (Data Management))

Parameters:

Input Features – The features to be aggregated.

Output Feature Class – The data that is created.

Dissolve Field(s) – The field(s) on which to aggregate features. If value in the field are the same the data is aggregated together.

** If nothing is specified then all internal boundaries are removed.*

Statistics Field(s) – Choose the statistics and fields with which to summarize aggregated data. Text attribute fields can be summarized to the First or Last. Numeric fields may be summarized using any statistic. Null values are excluded from all calculations.

First – Finds the first record in the Input table and uses its specified field value.

Last – Finds the last record in the Input Table and uses its specified field value.

SUM – Adds the total value for specified field.

MEAN – Calculates the average for the specified field.

MIN – Finds the smallest number for all records in the specified field.

MAX – Finds the largest value for all records in the specified field.

RANGE – Finds the range of values (MAX – MIN) for the specified field.

STD – Finds the standard deviation on the value in the specified field.

COUNT – Finds the number of values included in the statistical calculation. This counts each value except null values. (Hint: to find the number of Null values use count on another field that has no nulls and subtract the 2 values.)

Create Multipart Feature - *Specifies if multipart features are allowed in output feature class (1 record in table but potentially multiple polygons). The default is checked. (Personally recommend unchecking this feature to have a 1-1 relationship between records and polygons)*

Unsplit Lines – Controls how line features are dissolved. Unchecked the lines are dissolved into a single feature (default). Checked the lines only dissolve when two lines have a common end vertex.