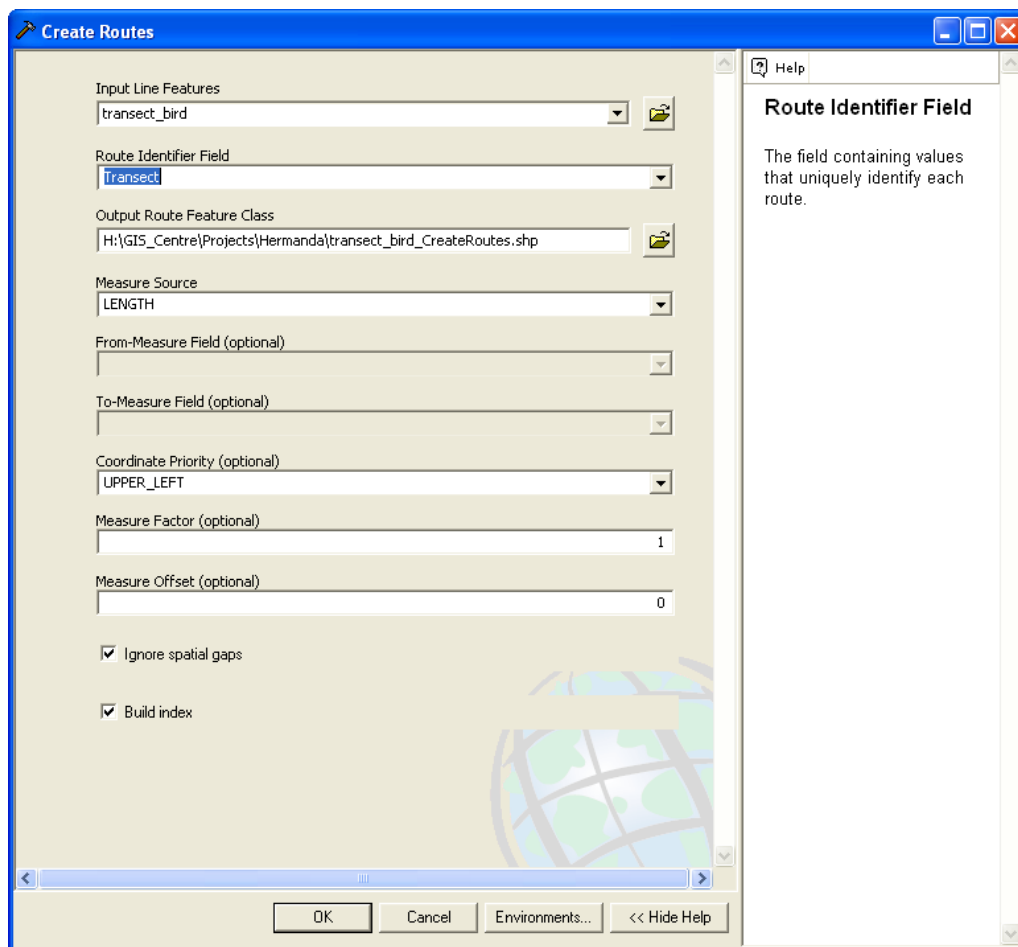


Calculating Routes A Long a Line

Assumes that lines exist as a shapefile

Step 1 – Create a Route from the Line Shapefile

Go to ArcToolBox – Linear Referencing Tools – Create Route. Fill in Fields Appropriately




Step 2 – Create an Table of Events (with Distances) to go along the Line/Route

Open Table – Convert file to CSV (comma delimited file).

The next thing that needs to be done is to make sure that the file will come into Arc. To do this the field headers must not contain any special characters. This means no spaces, hyphens etc.

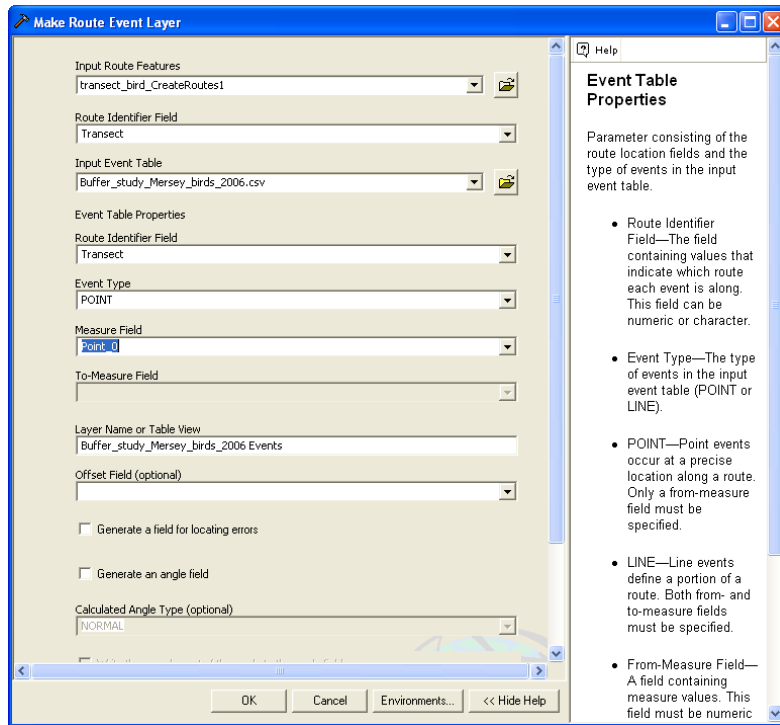
It is also imperative that each location/event has a linking attribute that has the same value that is in the Route Identifying Field from the last step. This ensures that the events will be assigned to the correct line.

	A	B	C	D	E	F	G	H	I	J	K	L	M	N	O	P	Q	
1	Transect	Treat	Date	Bird_no	BirdSp	Sex	Vocal1	Vocal2	Visual	Location	Side	Flying	Point_0	Pt_UTME	Pt_UTMN	Distance	AngleDeg	At
17	BWRB1	RB	30-Jun-06	20	HETH	M	S		N	F	N	P	120			100	21	
18	BWRB1	RB	30-Jun-06	31	BLBW	M	S		N	F	N	P	210			50	48	
19	BWRB1	RB	30-Jun-06	32	HETH	U	C		N	F	N	P	230			65	22	
20	BWRB2	RB	24-May-06	2	OVEN	M	S		N	F		P	0			40	77	
21	BWRB2	RB	24-May-06	5	BTNW	M	S		N	F		P	0			60	67	
22	BWRB2	RB	24-May-06	10	NOPA	M	S		N	C		P	0			45	67	
23	BWRB2	RB	24-May-06	21	NOPA	M	S		N	C		P	90			50	87	
24	BWRB2	RB	24-May-06	23	RBNU	M	S		N	C		P	110			30	44	
25	BWRB2	RB	24-May-06	29	OVEN	M	S		N	U		P	190			90	52	
26	BWRB2	RB	24-May-06	34	NOPA	M	S		N	C		P	260			40	63	
27	BWRB2	RB	12-Jun-06	6	BTNW	M	S		N	F		P	0			75	75	
28	BWRB2	RB	12-Jun-06	14	HETH	M	S		N	F		P	30			80	13	
29	BWRB2	RB	12-Jun-06	20	NOPA	M	S		N	F		P	50			30	35	
30	BWRB2	RB	12-Jun-06	21	HETH	U	C		N	C		F	70			50	85	
31	BWRB2	RB	12-Jun-06	34	BTNW	M	S		N	C		P	180			70	81	
32	BWRB2	RB	12-Jun-06	38	NOPA	M	S		N	C		P	190			50	57	
33	BWRB2	RB	24-Jun-06	1	NOPA	M	S		N	S		P	0			35	32	
34	BWRB2	RB	24-Jun-06	3	OVEN	M	S		N	F		P	0			35	84	
35	BWRB2	RB	24-Jun-06	5	HETH	M	S		N	F		P	0			80	50	
36	BWRB2	RB	24-Jun-06	13	YBSA	U	D		N	C		P	50			100	58	

Add this table to ArcMap using the Add Data button  .

Step 3 – Make Route Event Layer

In ArcToolBox – Open Linear Referencing Tools – Make Route Event Layer Tool



Step 4 – Convert to Shapefile

Make the event file permanent. Right click on the event table in the Table of Contents – Data – Export Data. Name the file appropriately.

Step 5 – Add XY location (Optional)

In ArcToolbox – Index tab – Add XY (management)