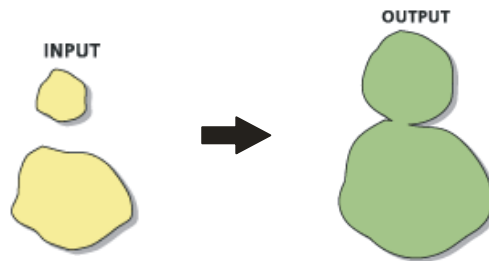



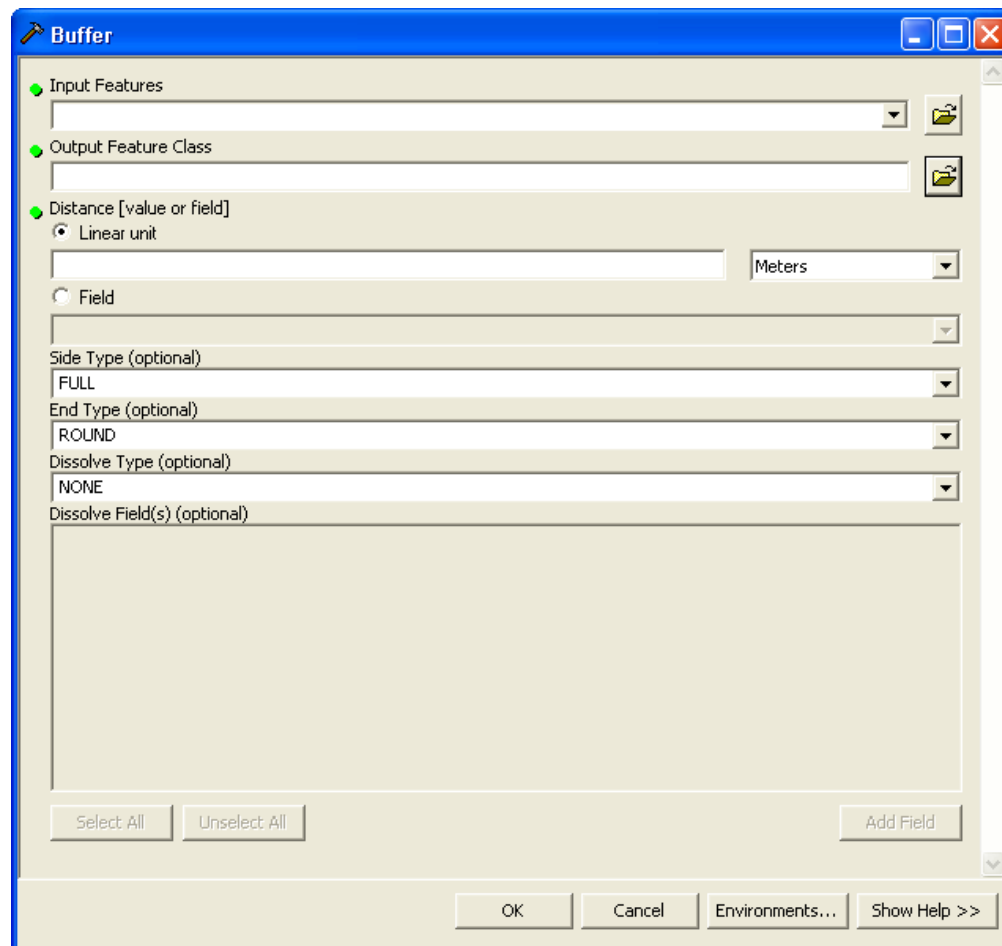
[http://webhelp.esri.com/arcgisdesktop/9.3/index.cfm?id=1348&pid=1347&topicname=Buffer_\(Analysis\)](http://webhelp.esri.com/arcgisdesktop/9.3/index.cfm?id=1348&pid=1347&topicname=Buffer_(Analysis))

Buffer – Creates buffer polygons to a specified distance around the Input Features. An optional dissolve can be performed to remove overlapping buffers.



Where do I Find it?

- Open ArcToolbox. 
- Analysis Toolbox –Proximity Toolset – Buffer



Parameters:

Input Features – The features to be buffered.

Output Feature Class – The data that is created.

Distance – *Linear Unit* – Where you specify the buffer distance and unit.

Field – The field that indicates what the buffer distance is for individual features.

** If negative value the buffer will be placed on the inside of the polygon (only valid for polygon features.)*

Side Type – *(Only valid with ArcInfo license)* Indicates which side will be buffered. This is dependent on which direction the line was created. *(this option is generally left alone)*

End Type - *(Only valid with ArcInfo license)* Either flat or round. The default is round.

Dissolve Type – Specifies whether overlapping buffers are removed. Options are None (no removing takes place), All (all overlapping buffers replaced), List (removes overlaps depending on the value in field(s) .

Dissolve Field(s) – *(Only valid if List is selected in last parameter).* List of fields that will be removed/dissolved if values are the same in specified field.