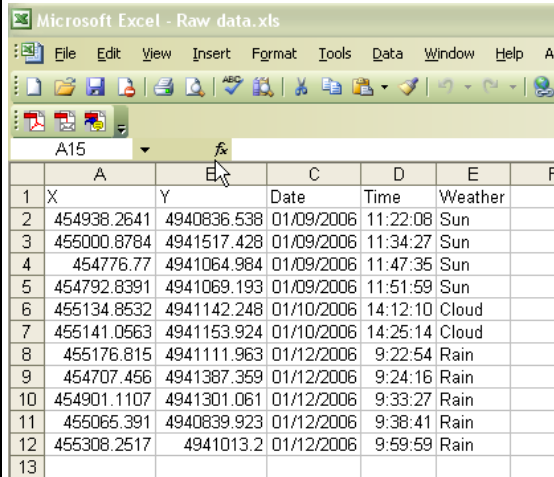


## Adding XY Data to ArcMap

### Step 1 – Working with data in Excel

Import your raw data into Excel. You should have 2 columns of coordinates, x and y. **For example:** northing & easting or latitude & longitude.

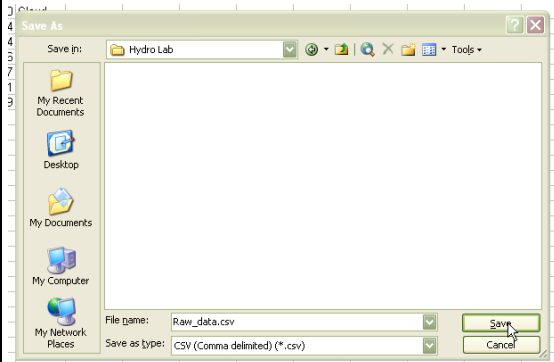


	A	B	C	D	E	F
1	X	Y	Date	Time	Weather	
2	454938.2641	4940836.538	01/09/2006	11:22:08	Sun	
3	455000.8784	4941517.428	01/09/2006	11:34:27	Sun	
4	454776.77	4941064.984	01/09/2006	11:47:35	Sun	
5	454792.8391	4941069.193	01/09/2006	11:51:59	Sun	
6	455134.8532	4941142.248	01/10/2006	14:12:10	Cloud	
7	455141.0563	4941153.924	01/10/2006	14:25:14	Cloud	
8	455176.815	4941111.963	01/12/2006	9:22:54	Rain	
9	454707.456	4941387.359	01/12/2006	9:24:16	Rain	
10	454901.1107	4941301.061	01/12/2006	9:33:27	Rain	
11	455065.391	4940839.923	01/12/2006	9:38:41	Rain	
12	455308.2517	4941013.2	01/12/2006	9:59:59	Rain	
13						

Maintain the decimal places for accuracy. Keep or add additional fields of data.

Format the field names. **Note:** Field names should not have spaces and should not be longer than 10 characters.


Save the file as CSV format (comma delimited).

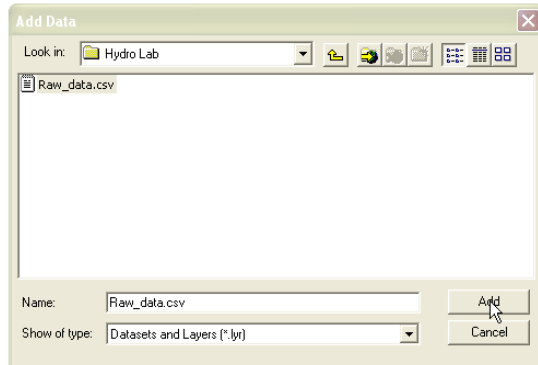


Close Excel. You cannot add the CSV table to ArcMap if it is open in Excel.

## Step 2 – Adding data to ArcMap

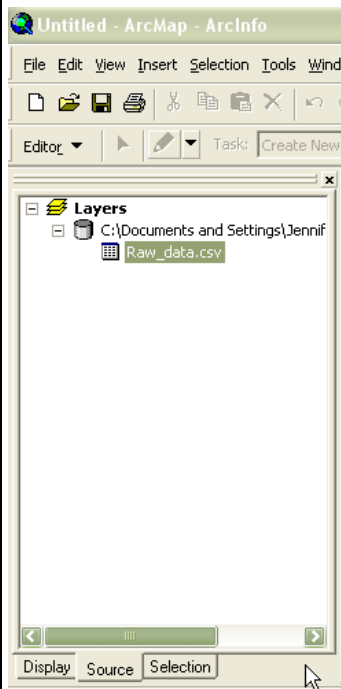
Open ArcMap. You may open an existing map to add the data to, or create a new one.

Click the Add Data button  and navigate to your CSV file. Click Add.



In the Table of Contents, make sure that you are looking at the Source tab.

**Note:** The table will not be visible on the Display tab until the XY coordinates are displayed in the next step.



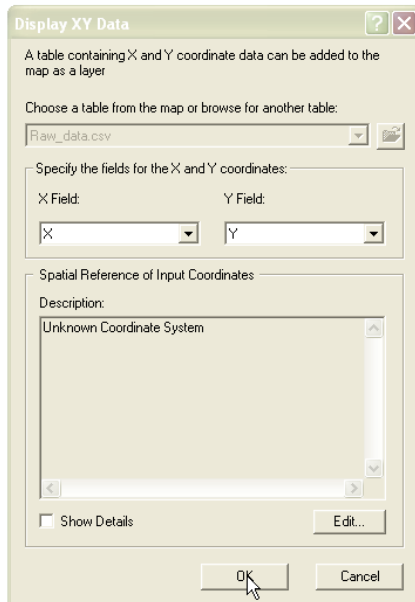
### Step 3 – Displaying XY Data

Right-click on the CSV table and select **Display XY Data...** The **Display XY Data** dialogue will open.

If there is more than one table added to the project, use the drop-down menu to select which table you want to display.

Use the drop-down menus to specify the fields for the x and y coordinates. X will be the easting; Y the northing.

Leave the **Spatial Reference** as unknown.



Click **OK**.

You should now see your data displayed on the map. You may need to right-click on the **Events** layer and choose **Zoom to Layer**.



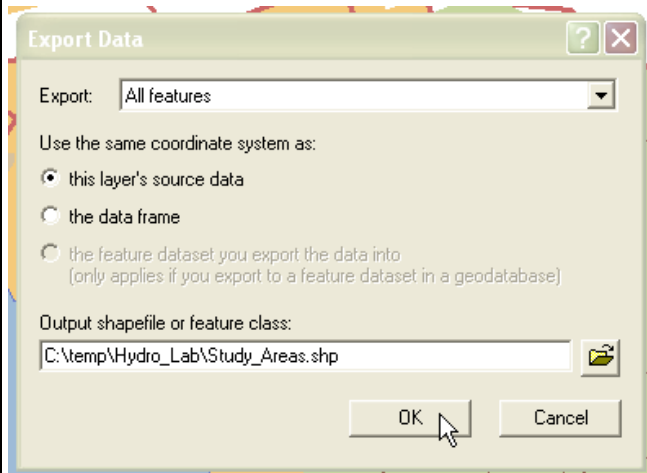
**IF YOU DO NOT SEE YOUR DATA**

- Make sure that you have the x and y fields correct in the Display XY Data dialogue. If the points show up on the wrong side of the world, try reversing the coordinate fields.
- Right-click on the table in the Table of Contents and select Open to preview the table and ensure that the values are correct and have not been truncated.

**Step 4 – Create a new shapefile or feature dataset**

Right-click the Events layer in the Table of Contents and select Data -> Export Data...

Provide the desired path, filename and file format (shapefile or feature class). Click OK.



Choose Yes to add the exported data to the map as a layer. Now this layer can be added to other ArcMap project files.

If you do not export the events layer, it will not be saved as its own entity and therefore cannot be added to other projects. It remains only as a display of the table.