

Ed Susko

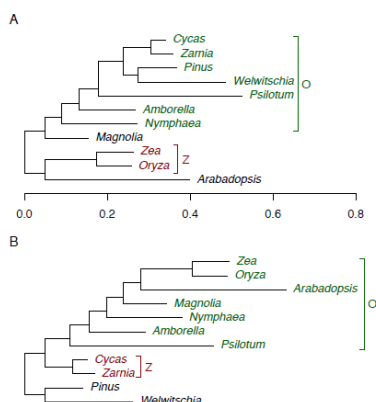
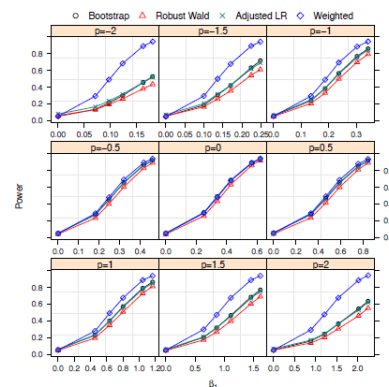
Statistics



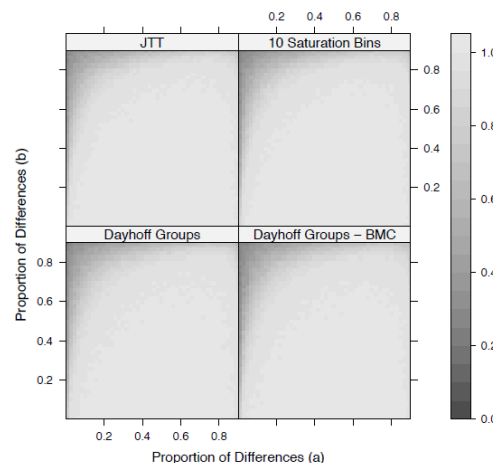
Dr. Susko has research interests in **statistical inference** and applications. He is also part of an interdisciplinary team working on **statistical evolutionary bioinformatics**.

Statistical Inference: How do we test hypotheses in settings where standard theory does not apply? How do we best implement bootstrapping? What sorts of model misspecification does bootstrapping work with?

Evolutionary Inference: What are the major events of early evolution? How do we deal with the unusual parameter space of trees? How do we best adjust for heterogeneity? Outliers?



Adaptive Evolution: What models and methods are best for determining where in a genome adaptive evolution has occurred? How do we balance computational complexity and full use of data?



For more information, contact:

Dr. Ed Susko

susko@mathstat.dal.ca

dal.ca/mathstat



DALHOUSIE
UNIVERSITY

MATHEMATICS
AND STATISTICS