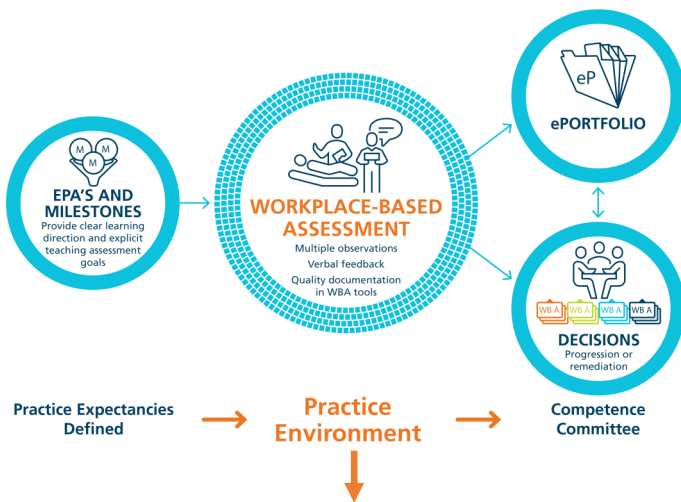


# Pediatric Residency Program Monthly Newsletter

## CLINICAL TEACHING AND OBSERVATION



### Expectation of Faculty

- ◆ Observe trainees.
- ◆ Provide written-verbal “coaching feedback” to promote learner growth.

**To help structure feedback, try using this approach (ARCH framework):**

**Ask** for self-assessment

**Reinforcement** of what was done well

**Correct**

**Help** the feedback recipient with a plan for improvement

## DOCUMENTING OBSERVATIONS

Documenting your observations of residents can be done in a number of ways.

- ◆ **EPA forms:** initiated by the *resident* on One45.
- ◆ **Procedure forms:** initiated by either the *resident or faculty* on One45
- ◆ **ITER/ITAR** at the end of the rotation. This should not be the only means of documenting the observations. It should be a summary of the EPA observations and other rotation specific observations.
- ◆ **Narrative feedback forms:** initiated by *faculty* on One45\*. Use this form for **anything** you wish to document, for example: feedback from on-call, issues you may have e-mailed or discussed with the Program Director before this form was available, outstanding performance, sub-optimal performance.

\*Note: If you do not see this form on your One45 screen please contact Alicia MacDonald (470-8119 or [alicia.macdonald@iwk.nshealth.ca](mailto:alicia.macdonald@iwk.nshealth.ca))

## ONE45 MOBILE APP

The One45 mobile app is **free** and available for Apple iOS and Android. This mobile app allows faculty, staff and learners access to their “forms to complete” assessments from their phone or tablet devices. Download today on the App Store or Google Play.