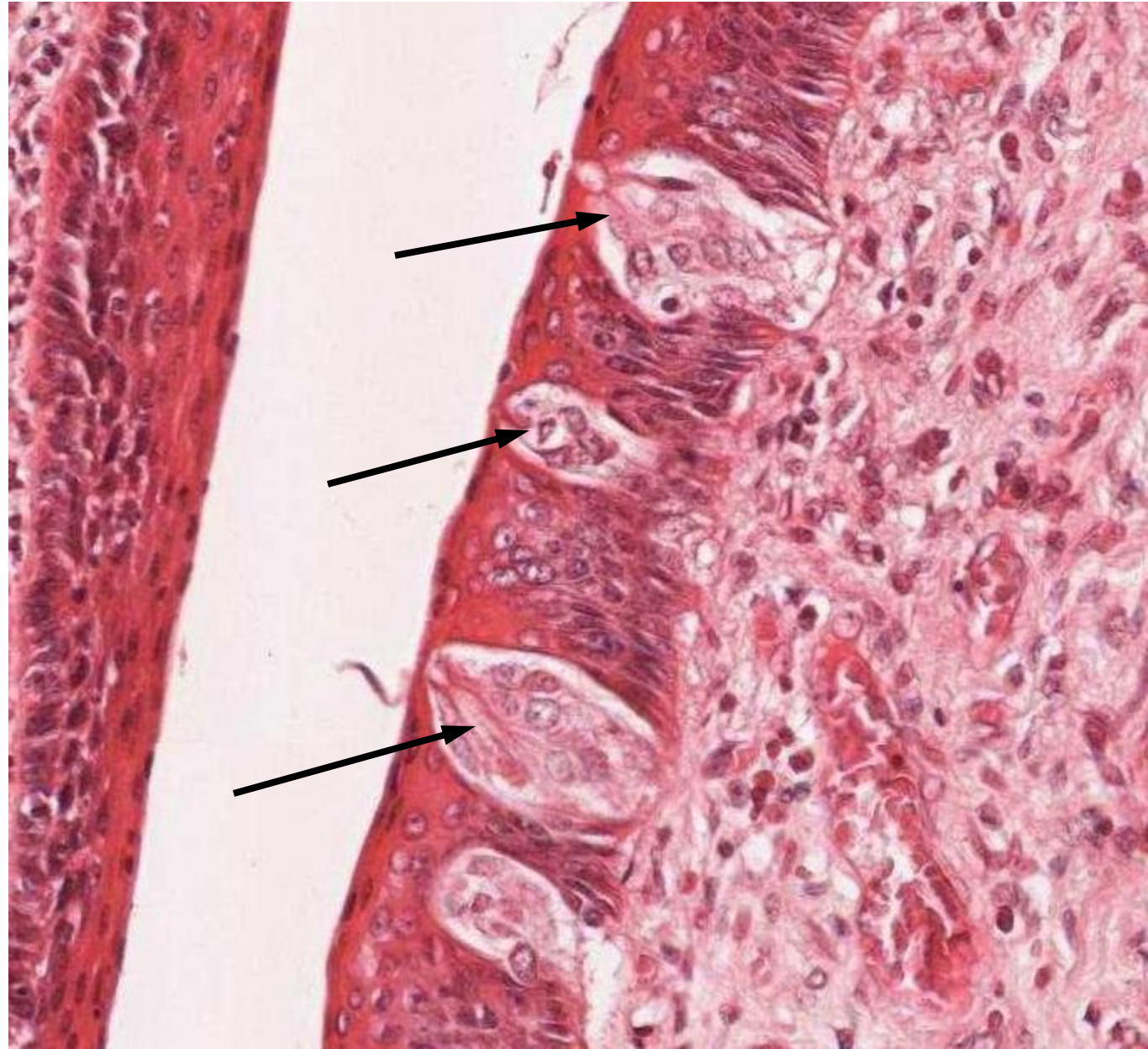


SPECIAL SENSE: TASTE

RECEPTORS:

- on tongue and soft palate
- gustatory cells in taste buds
 - "sweet", "sour", "salty", "bitter", "umami"
- innervated by sensory nerves
- taste buds flushed rapidly by saliva

TASTE BUDS IN SIDE OF VALLATE PAPILLA



slide 17
like 15-6

TASTE BUD IN SUPPORTING EPITHELIUM

slide 17

