

Respiratory system

Functions: 1° Gas exchange: thin blood-air barrier, high surface area
 2° smell, sound reproduction

Regions: conducting part, respiratory part

Airway wall structure: layers vary by region

Layers:

mucosa - epithelium, basement membrane, lamina propria, muscularis mucosa
submucosa

Respiratory epithelium

Conducting part: airways

extrapulmonary

nares, vestibule, nasal cavity, olfactory epithelium

nasopharynx, epiglottis

larynx, trachea, primary bronchi

intrapulmonary

bronchi

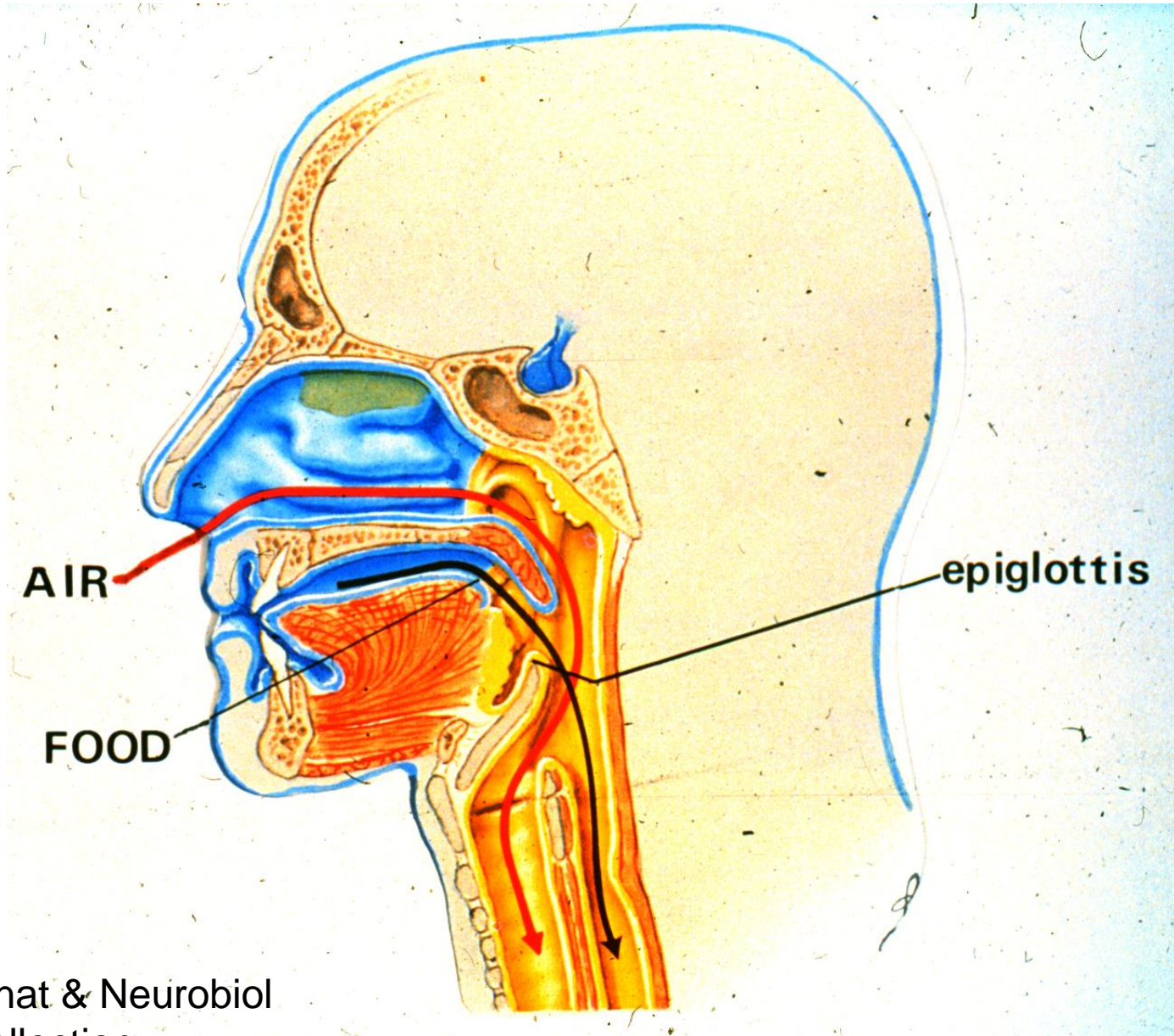
bronchioles -> terminal bronchiole

Respiratory part: gas exchange

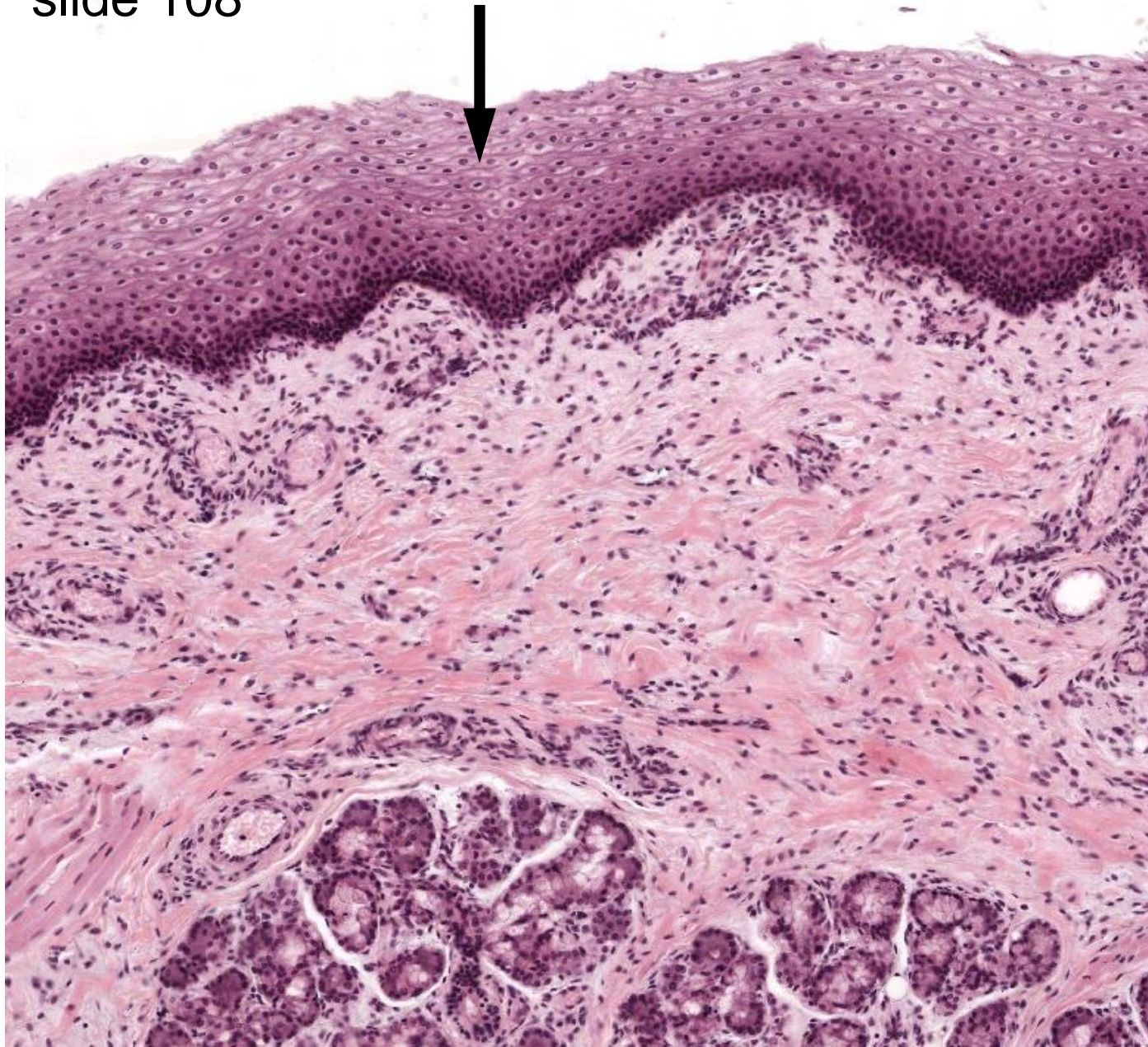
respiratory bronchioles

alveolar duct -> alveolar sac -> alveoli

NASAL CAVITY AND PHARYNX: schematic



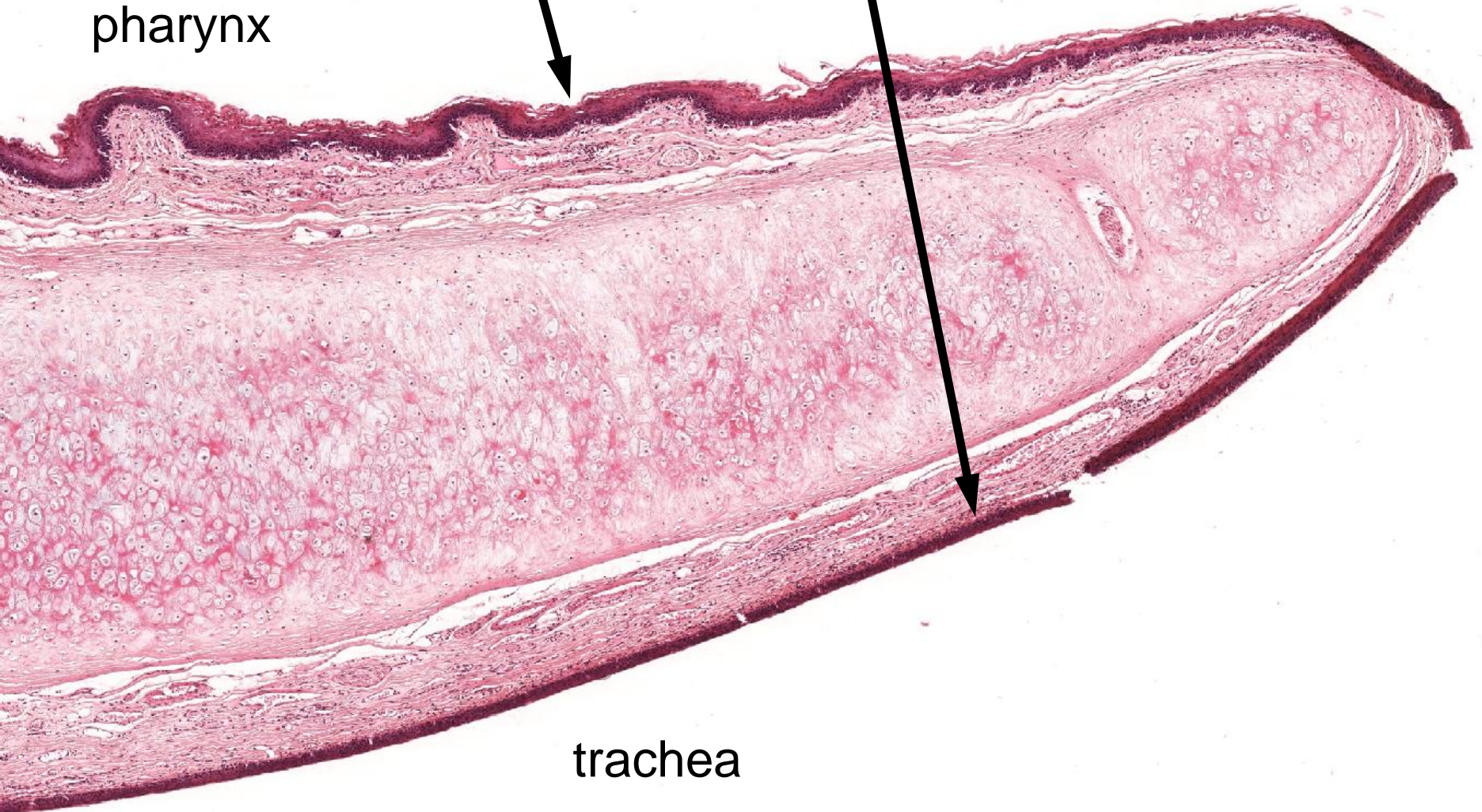
ORAL EPITHELIUM: stratified nonkeratinized squamous
slide 108



EPIGLOTTIS : ORAL AND RESPIRATORY EPITHELIUM

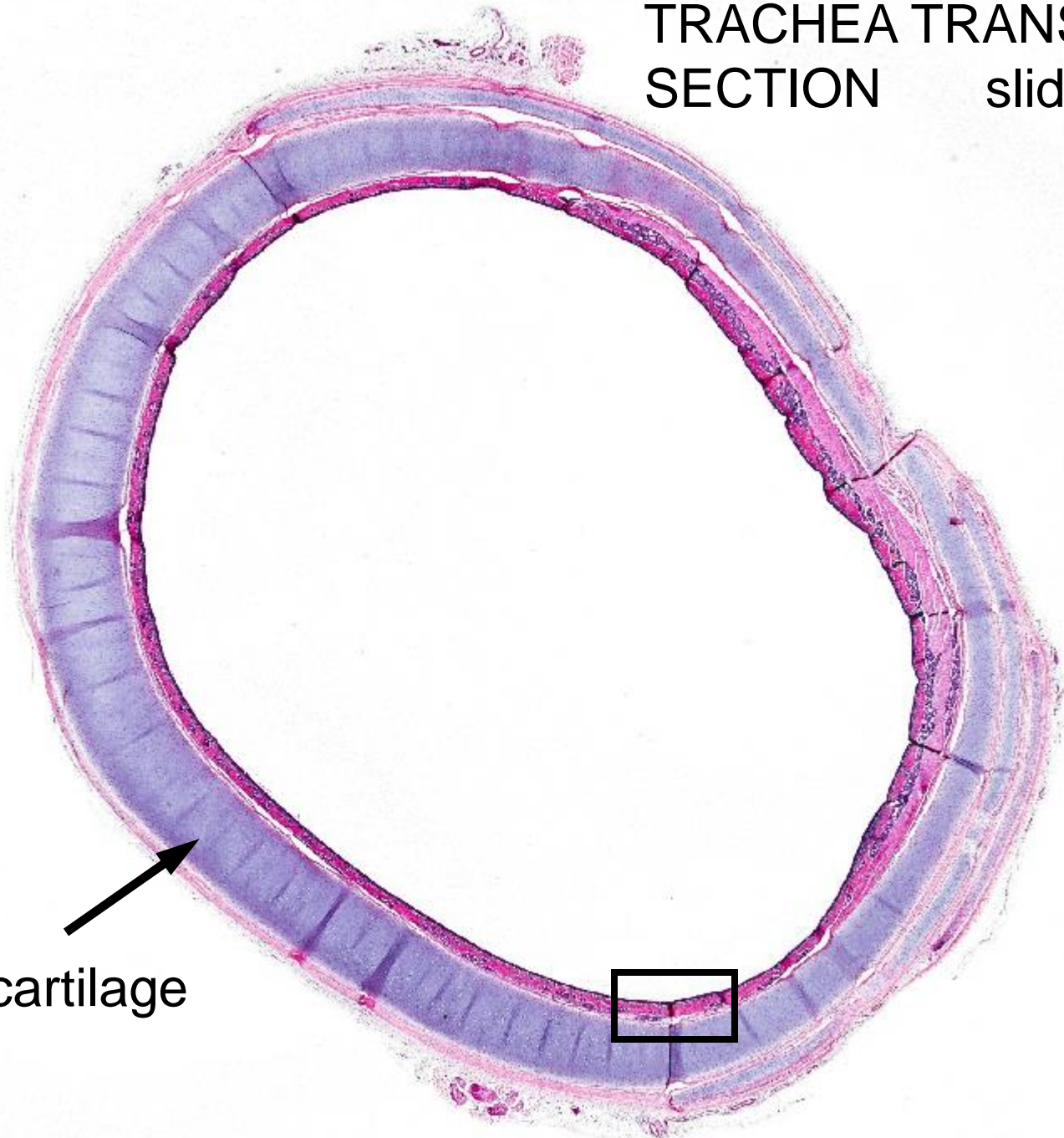
slide 29

pharynx



trachea

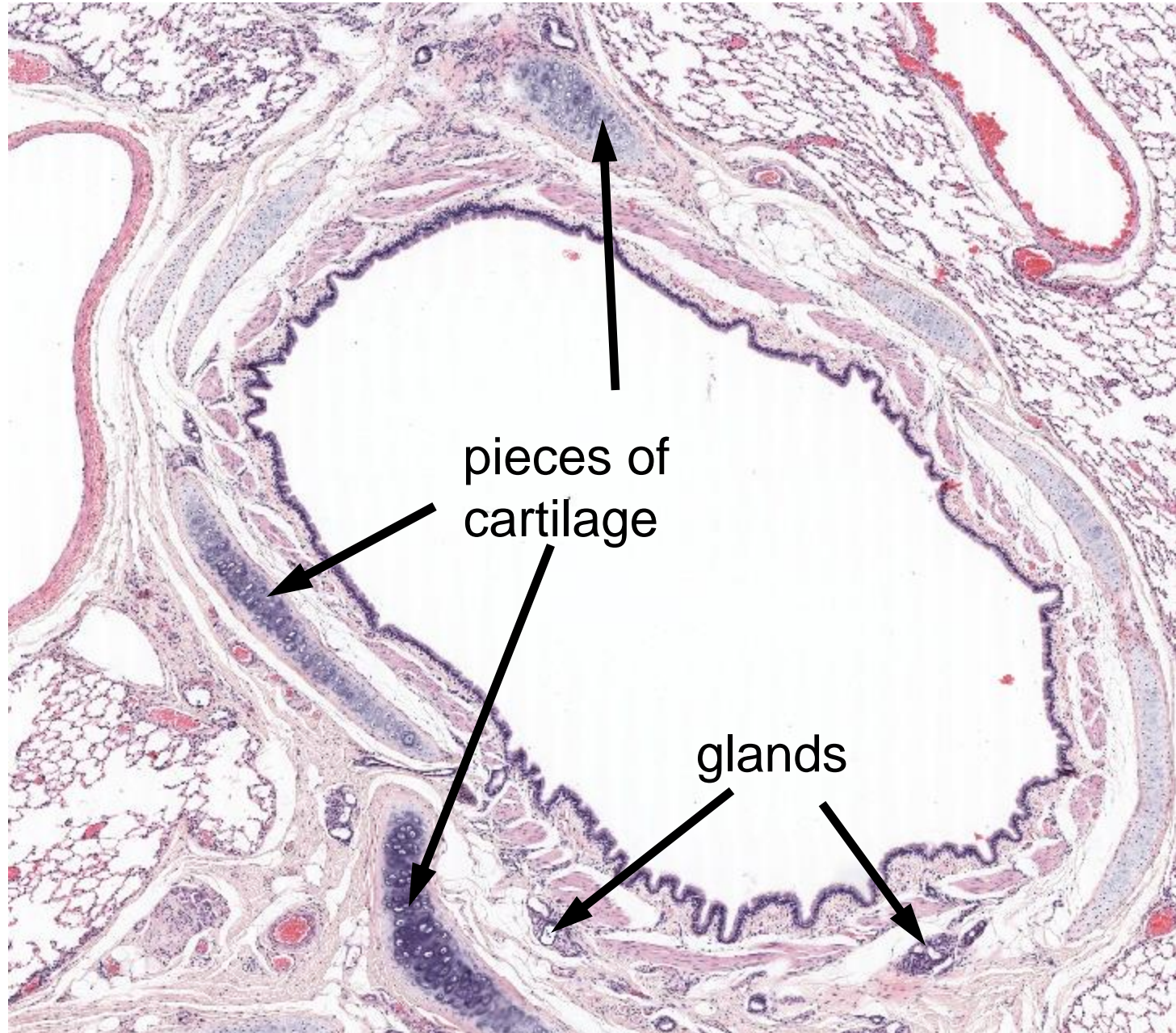
TRACHEA TRANSVERSE
SECTION slide 202



hyaline cartilage
ring

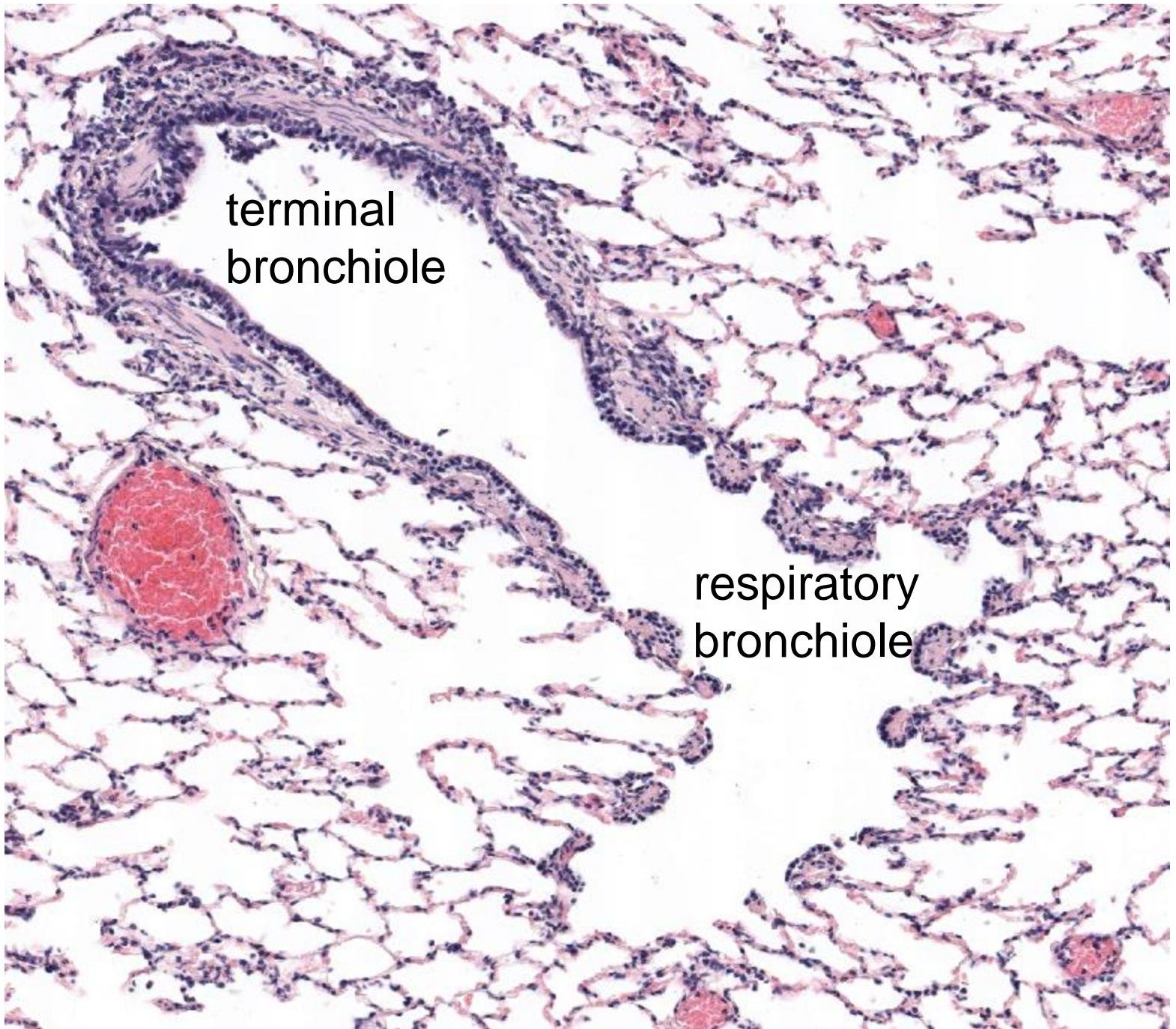


LARGE BRONCHUS CROSS-SECTION slide 70



slide
70

(like
17-11b)



Respiration: figures from text

17-1, 17-3, 18-3, 17-2, 17-6, 17-5, 17-8, 17-7,
17-9, 17-11, 17-10, 17-12, 17-14, 17-13, 17-15