

Nervous tissue

Basic cell types:

Neurons

Support cells

Glia in central nervous system:

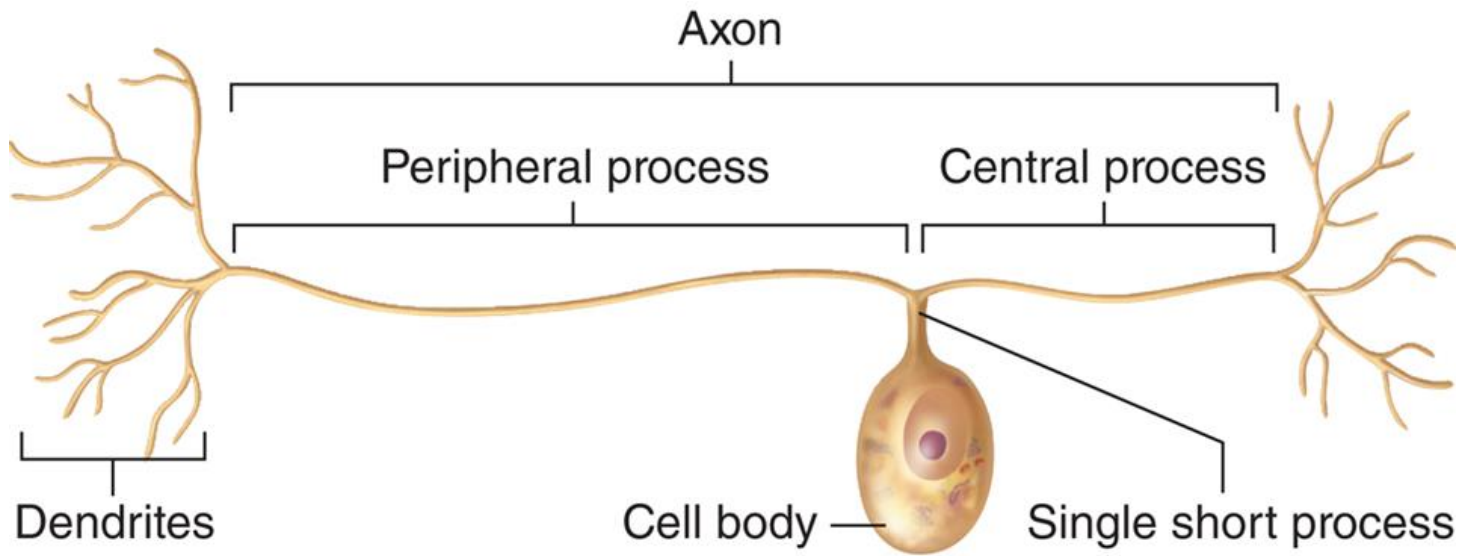
astrocytes, oligodendrocytes,
microglia

Peripheral nervous system:

satellite cells around ganglion neurons

Schwann cells around axons

Structure of nerves: axons, connective tissue



PSEUDOUNIPOLAR NEURON:

-dorsal root ganglion neuron - sensory



Dept. Anatomy & Neurobiol slide collection

Peripheral nervous system

ganglia: collections of neuronal somata in body tissues

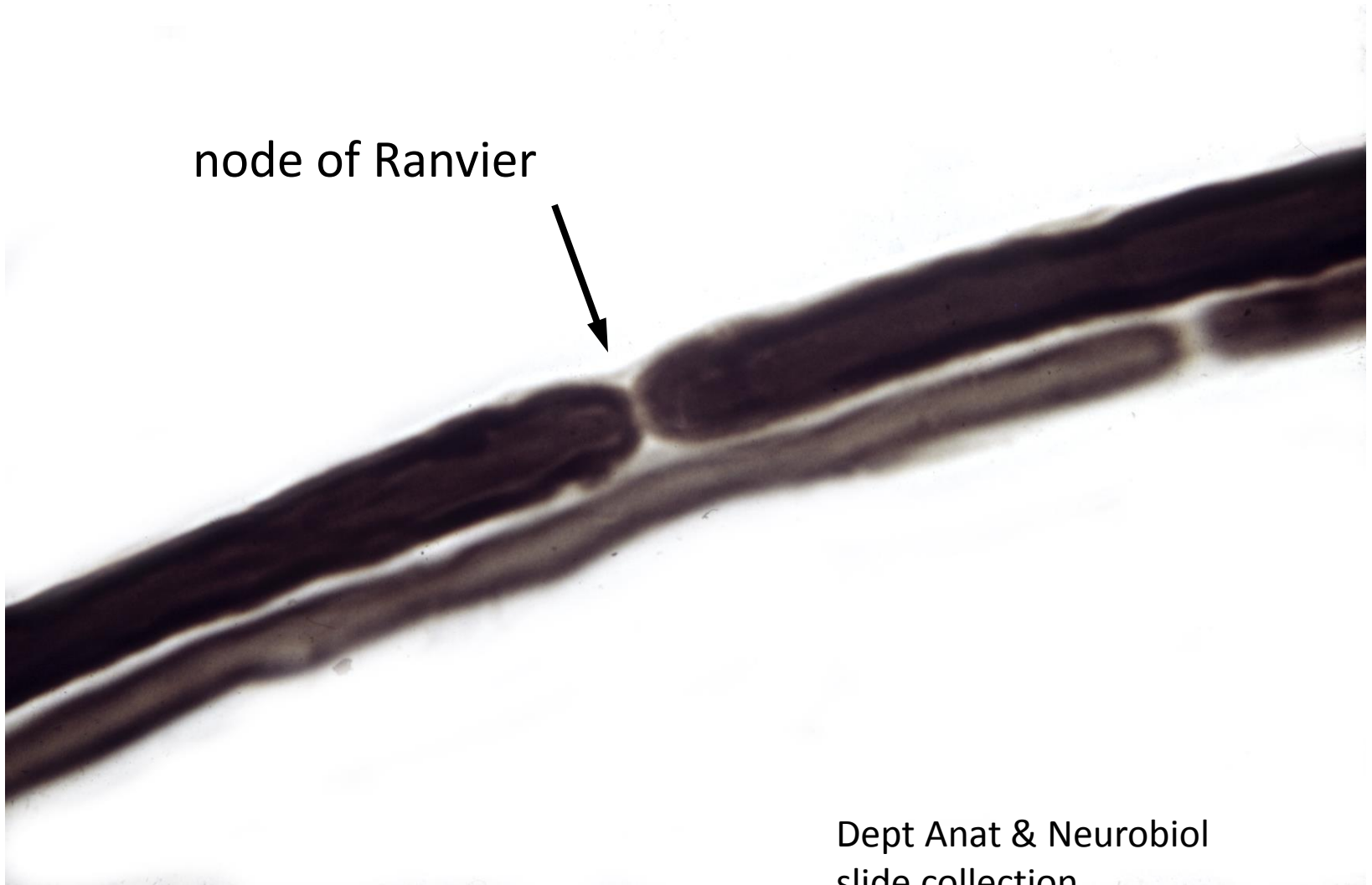
support cells:

satellite cells in ganglia = astrocytes in CNS

Schwann cells in nerves = oligodendrocytes in CNS

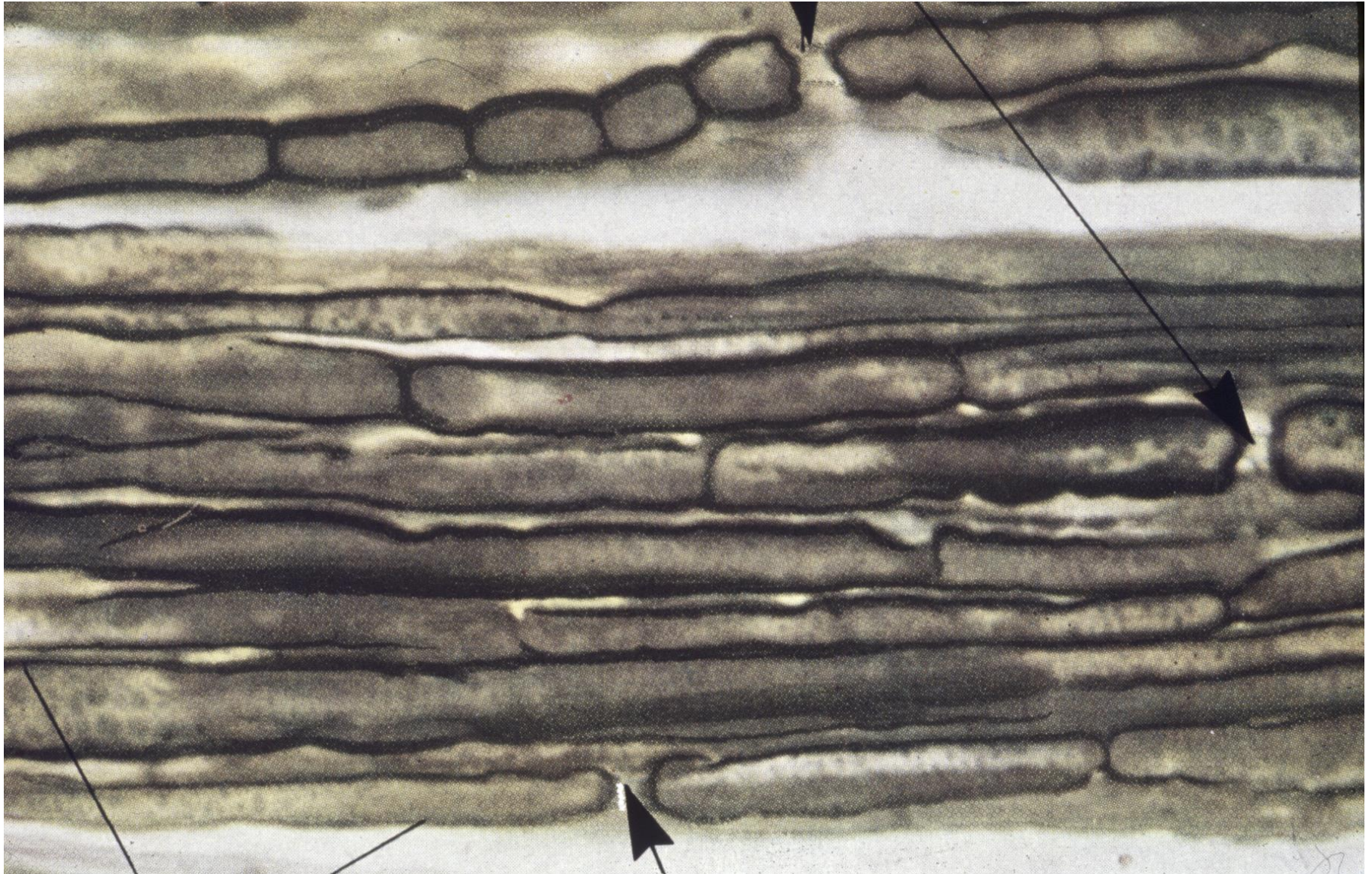
Teased nerve fibres – osmium stain

node of Ranvier



Dept Anat & Neurobiol
slide collection

Longitudinal section of whole nerve segment – osmium stain
arrows: nodes of Ranvier



Connective tissue in peripheral nerve

Endoneurium

Perineurium

Epineurium

List of text figures used in nervous system lecture

9-1, 9-3, 9-6, 9-4, 9-5, 9-9, 9-10, 9-29, 9-21, 9-22, 9-25, 9-26, 9-27