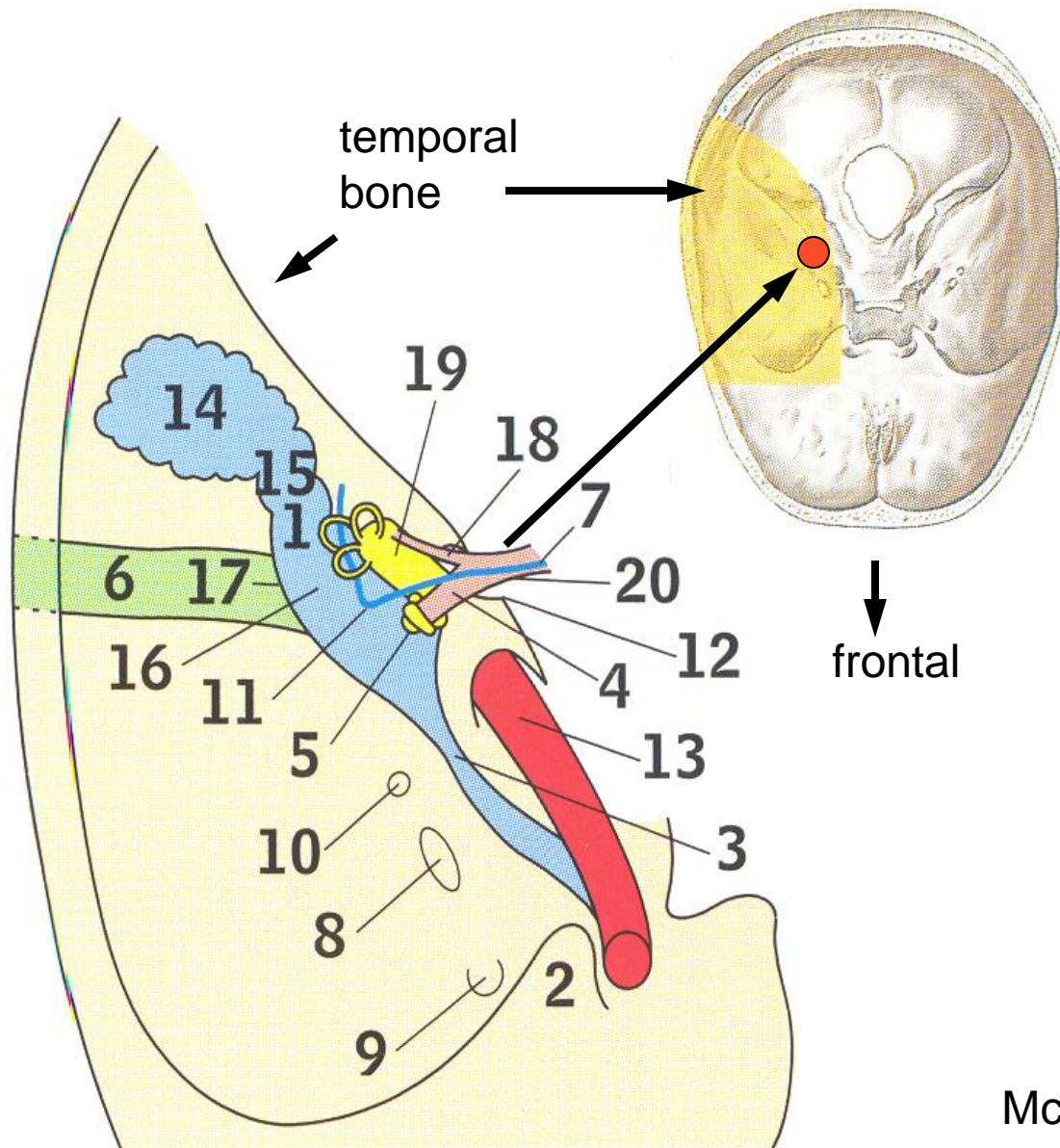
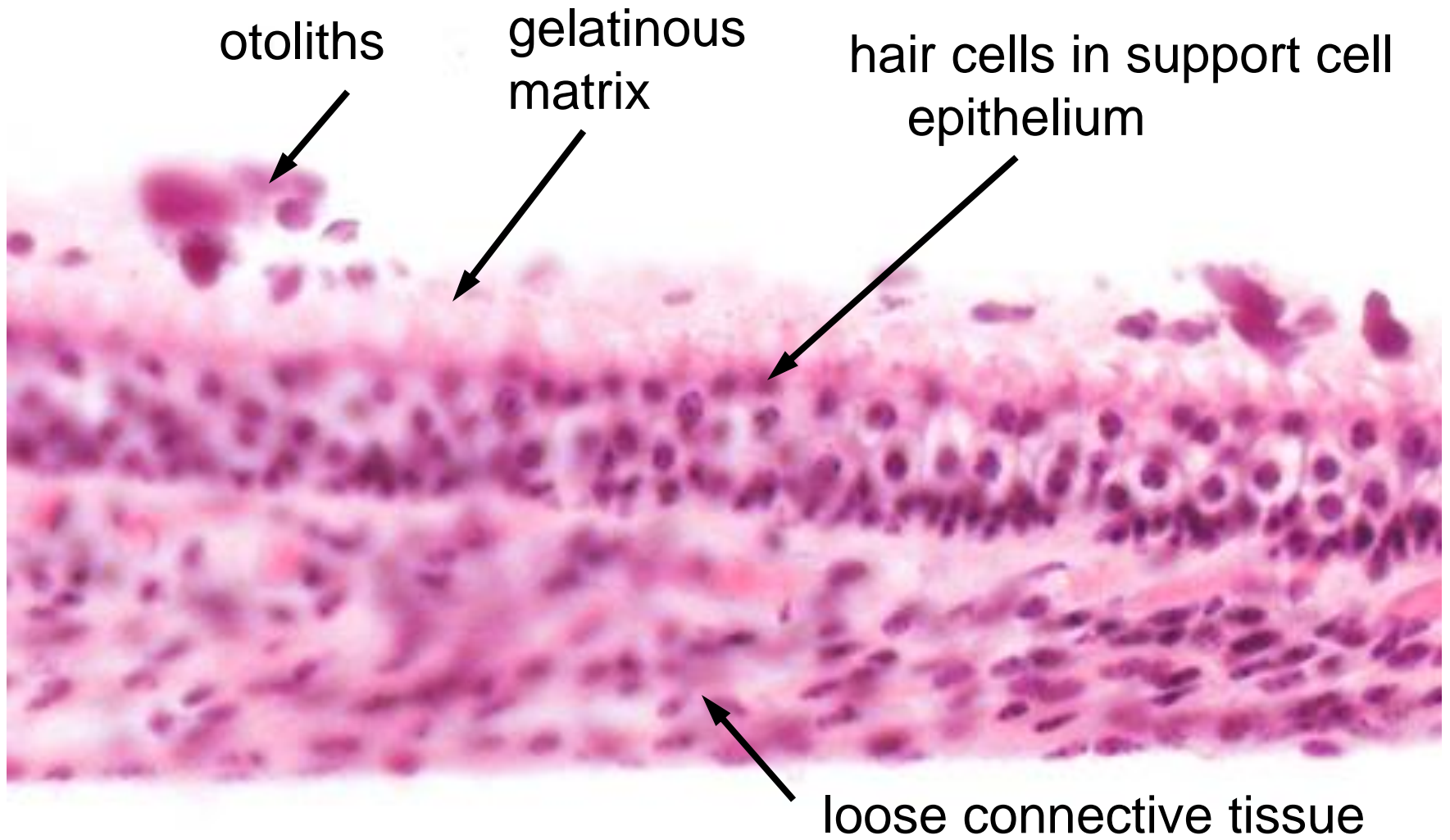


EAR

SPECIAL SENSE ORGAN FOR BALANCE AND HEARING

LABYRINTH IN TEMPORAL BONE





STRUCTURE OF MACULA

slide 96

VESTIBULAR FUNCTIONS:

- organ of balance, equilibrium
- inputs drive vestibular reflexes

SACCULE, UTRICLE

- head position relative to gravity
- linear acceleration

SEMICIRCULAR CANALS

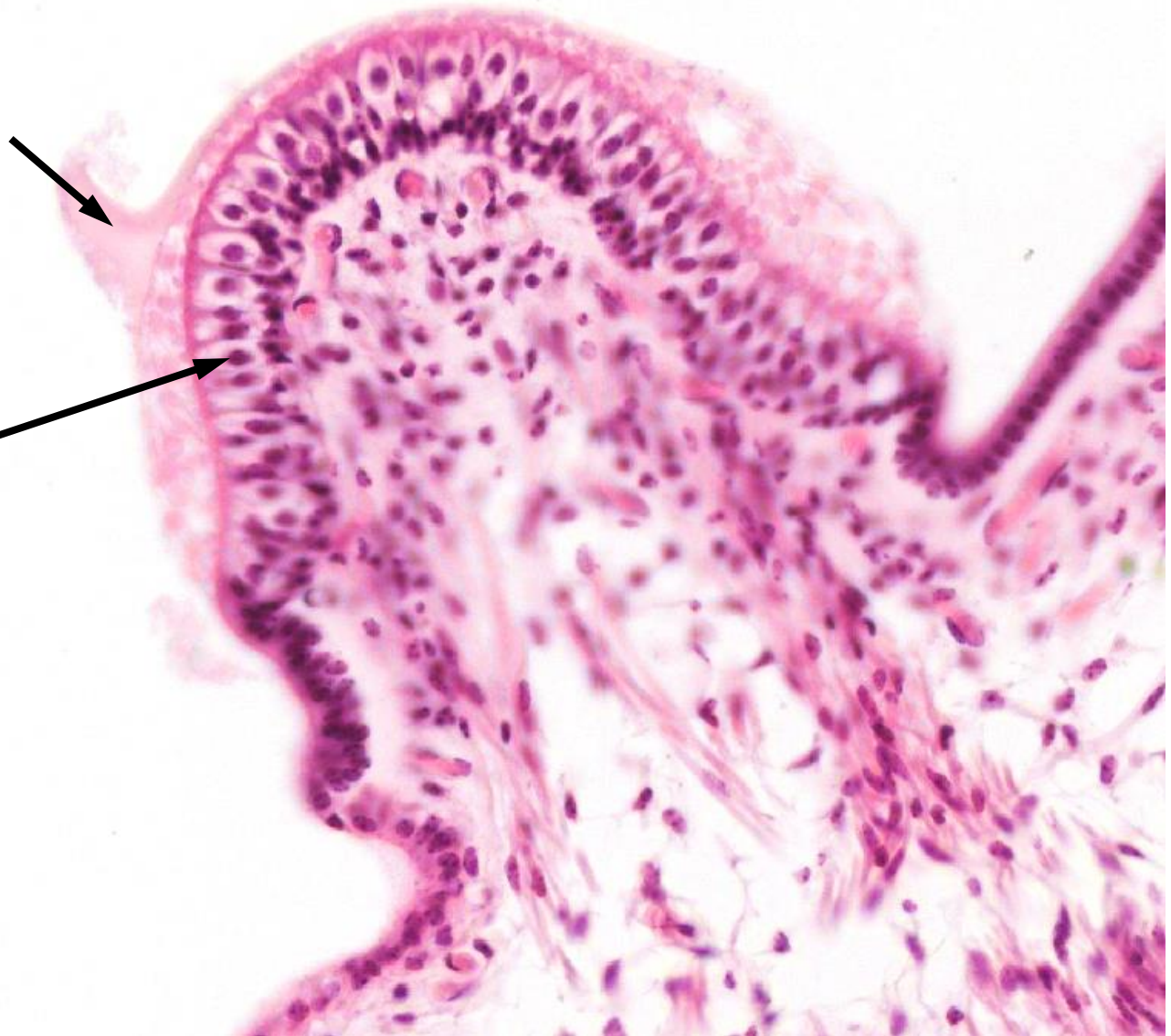
- angular head movements

CRISTA AMPULLA

slide 96

remains of cupula

hair cells



HEARING:

EARDRUM (TYMPANIC MEMBRANE)

OSSICLES

COCHLEA

23-29



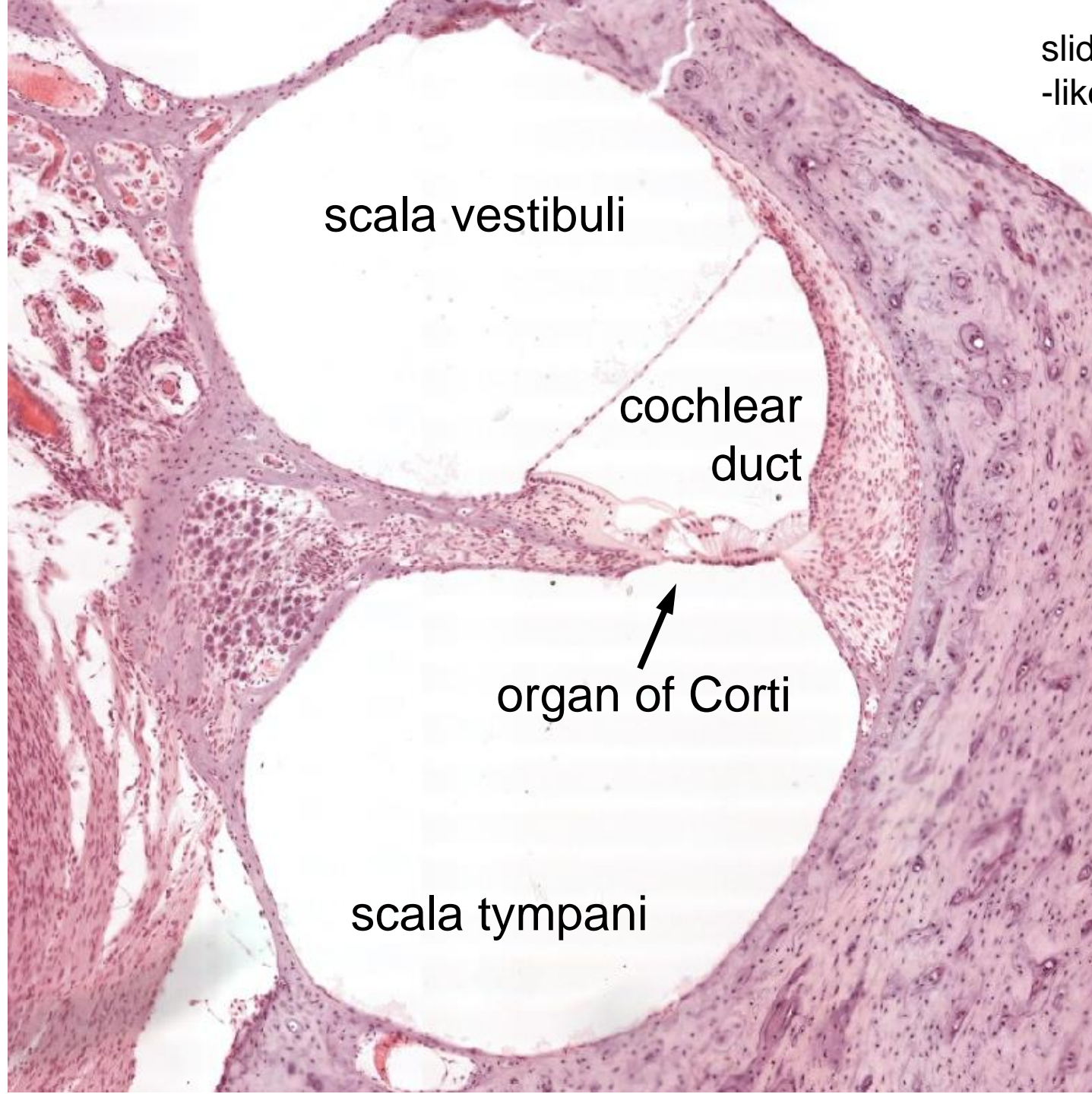
COCHLEA:

3 ducts in parallel

coiled in bone



slide 96



scala vestibuli

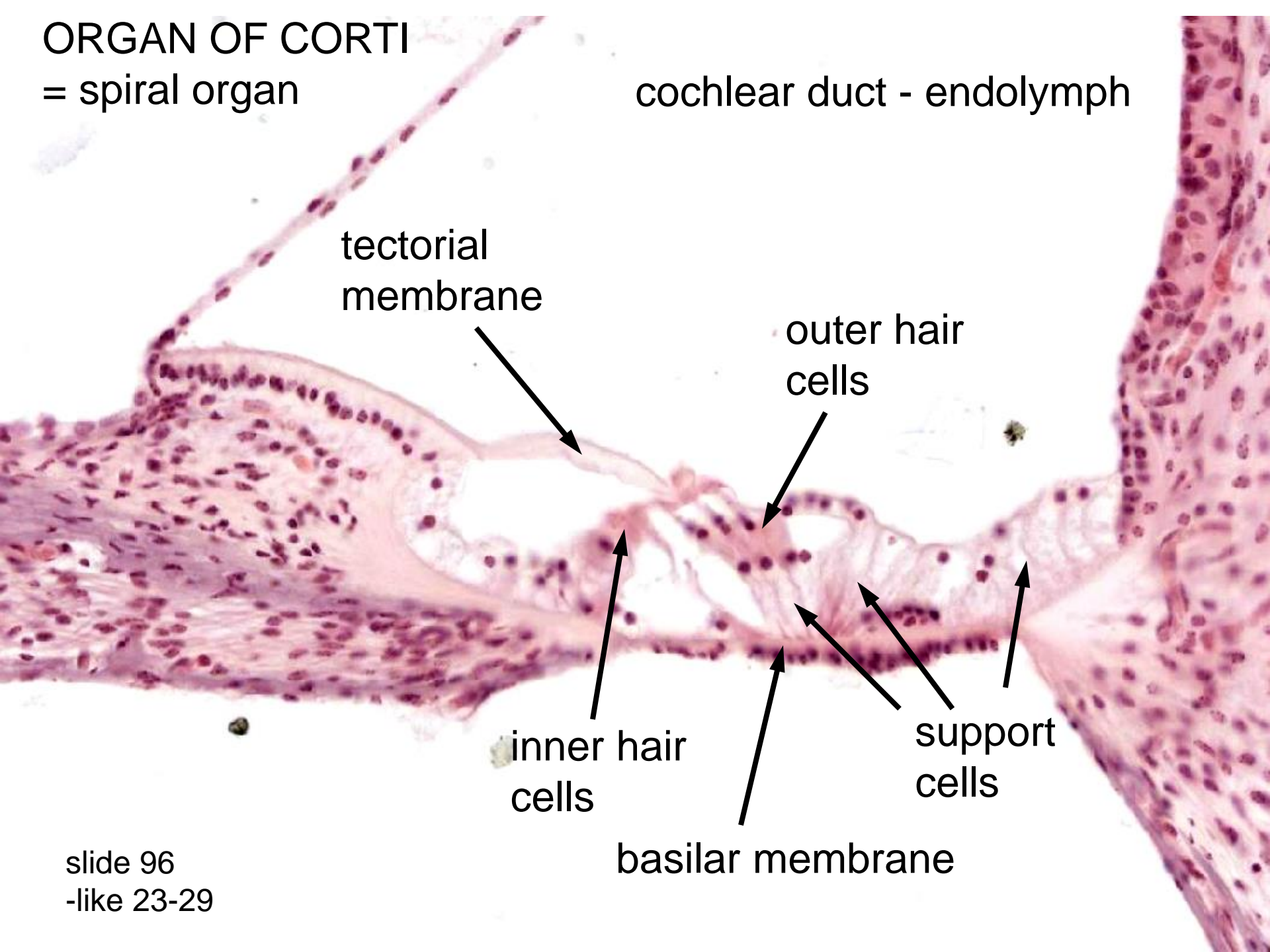
cochlear
duct

organ of Corti

scala tympani

ORGAN OF CORTI
= spiral organ

cochlear duct - endolymph



tectorial
membrane

outer hair
cells

inner hair
cells

support
cells

basilar membrane