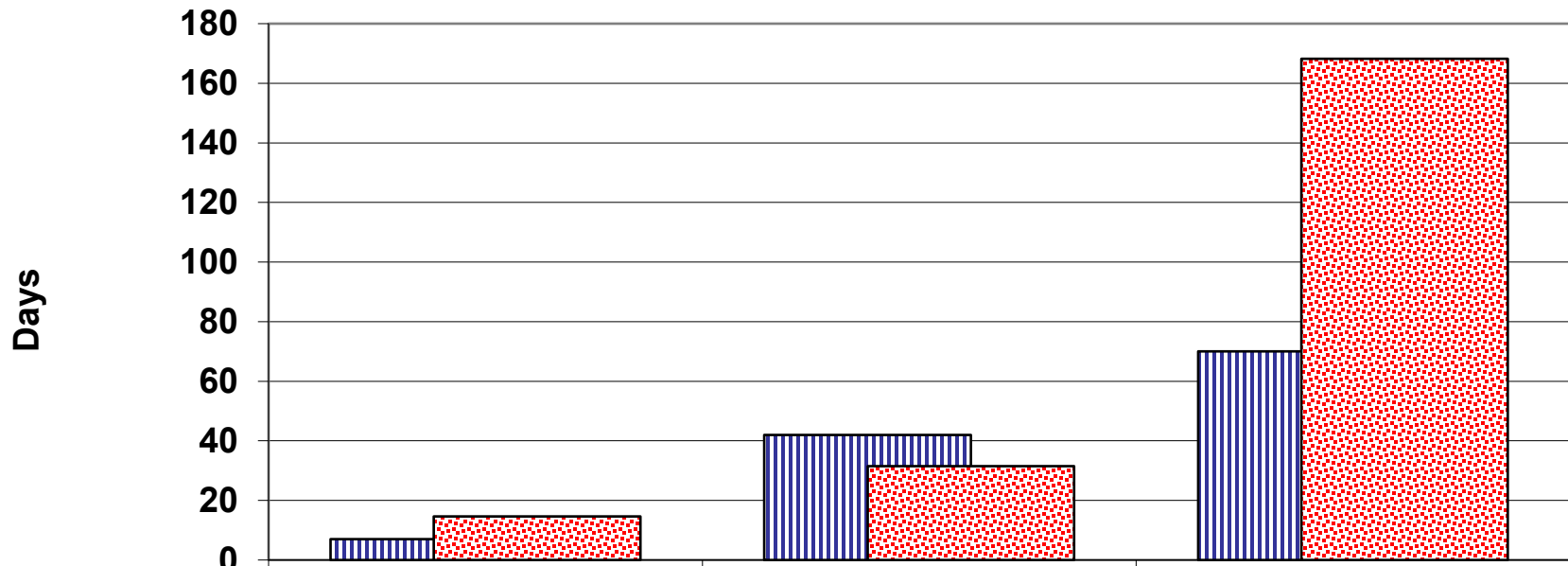


## Respirology

### Ambulatory Care Clinic Average Wait Time (Days)

#### QEII Health Sciences Centre, January - March 2022



	Urgent	Semi-Urgent	Non-Urgent
<b>Standard Wait Time</b>	<b>7</b>	<b>42</b>	<b>70</b>
<b>Average Wait Time</b>	<b>14.6</b>	<b>31.5</b>	<b>168.3</b>
<b>50th Percentile</b>	<b>5</b>	<b>18</b>	<b>150</b>
<b>90th Percentile</b>	<b>47.1</b>	<b>71.4</b>	<b>304</b>
<b>% Within Standard</b>	<b>79%</b>	<b>79%</b>	<b>20%</b>

Source: PHS Data

Prepared by DOM Information Office