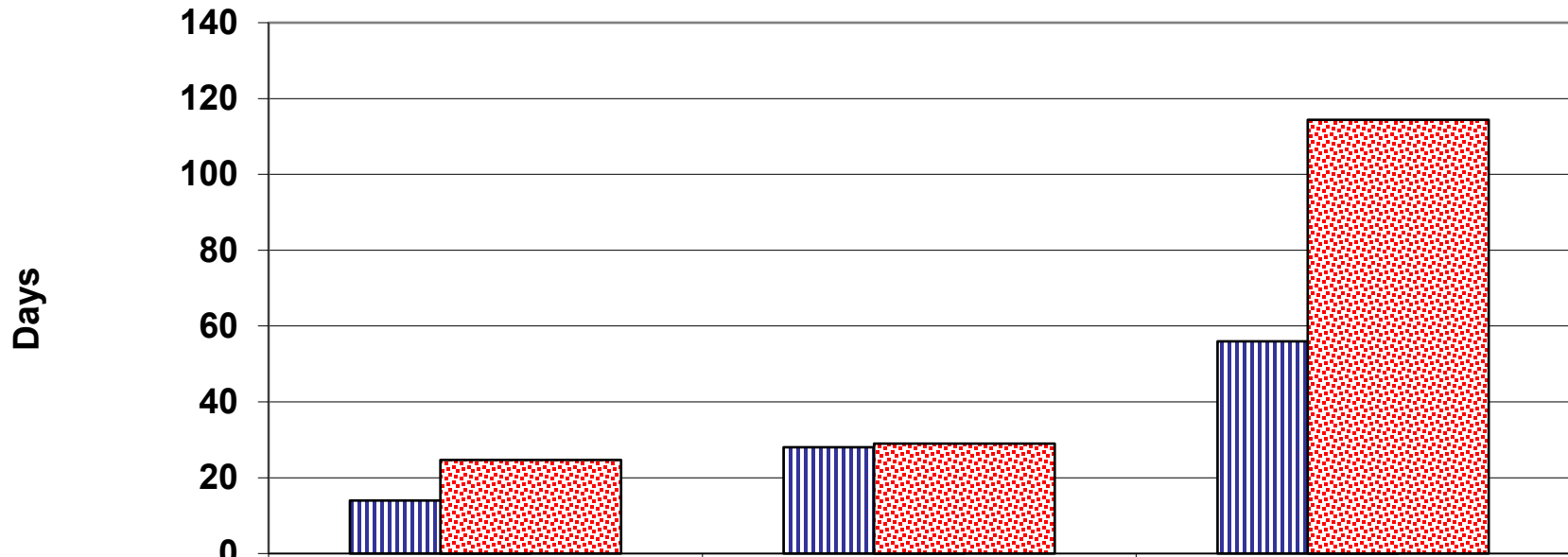


General Internal Medicine Ambulatory Care Clinic Average Wait Time (Days) QEII Health Sciences Centre, January - March 2022



	Urgent	Semi-Urgent	Non-Urgent
Standard Wait Time	14	28	56
Average Wait Time	24.6	29.0	114.4
50th Percentile	5	20	87
90th Percentile	19	68.6	216
% Within Standard	84%	68%	24%

Source: PHS Data

Prepared by DOM Information Office