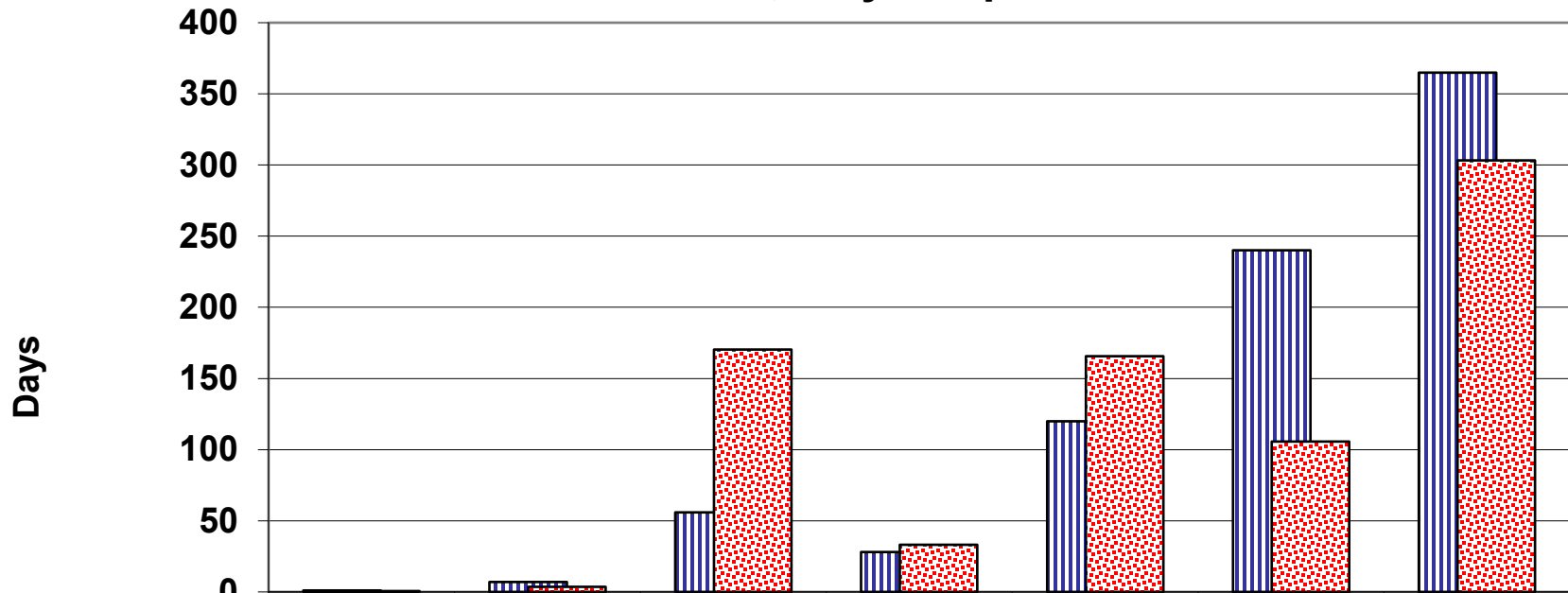


## Clinical Dermatology & Cutaneous Science Ambulatory Care Clinic Average Wait Time (Days) QEII Health Sciences Centre, July - September 2021



	<b>Emergent</b>	<b>Urgent</b>	<b>Semi-Urgent</b>	<b>Semi-Urgent 1</b>	<b>Semi-Urgent 2</b>	<b>Routine 1</b>	<b>Routine 2</b>
<b>Standard Wait Time</b>	<b>1</b>	<b>7</b>	<b>56</b>	<b>28</b>	<b>120</b>	<b>240</b>	<b>365</b>
<b>Average Wait Time</b>	<b>0.7</b>	<b>3.5</b>	<b>170.4</b>	<b>33.0</b>	<b>165.6</b>	<b>105.8</b>	<b>303.3</b>
<b>50th Percentile</b>	<b>1</b>	<b>3</b>	<b>156.5</b>	<b>27</b>	<b>125</b>	<b>84</b>	
<b>90th Percentile</b>	<b>1</b>	<b>7</b>	<b>240.8</b>	<b>69</b>	<b>363.1</b>	<b>187</b>	<b>517</b>
<b>% Within Standard</b>	<b>100%</b>	<b>91%</b>	<b>9%</b>	<b>57%</b>	<b>47%</b>	<b>95%</b>	<b>47%</b>

Source: PHS Data

Prepared by DOM Information Office