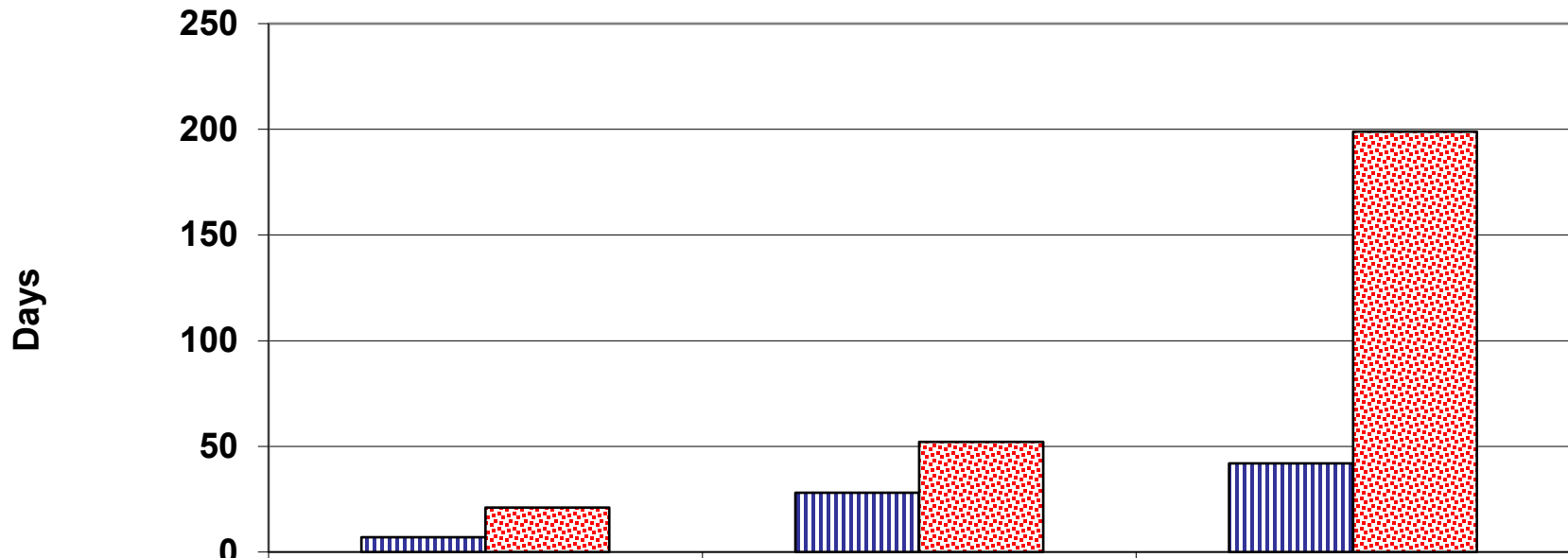


## Cardiology Ambulatory Care Clinic Average Wait Time (Days) QEII Health Sciences Centre, October - December 2020



	Urgent	Semi-Urgent	Non-Urgent
<b>Standard Wait Time</b>	<b>7</b>	<b>28</b>	<b>42</b>
<b>Average Wait Time</b>	<b>21.0</b>	<b>52.1</b>	<b>198.9</b>
<b>50th Percentile</b>	<b>10</b>	<b>39</b>	<b>123</b>
<b>90th Percentile</b>	<b>43.8</b>	<b>95</b>	<b>429</b>
<b>% Within Standard</b>	<b>36%</b>	<b>29%</b>	<b>25%</b>

Source: PHS Data

Prepared by DOM Information Office