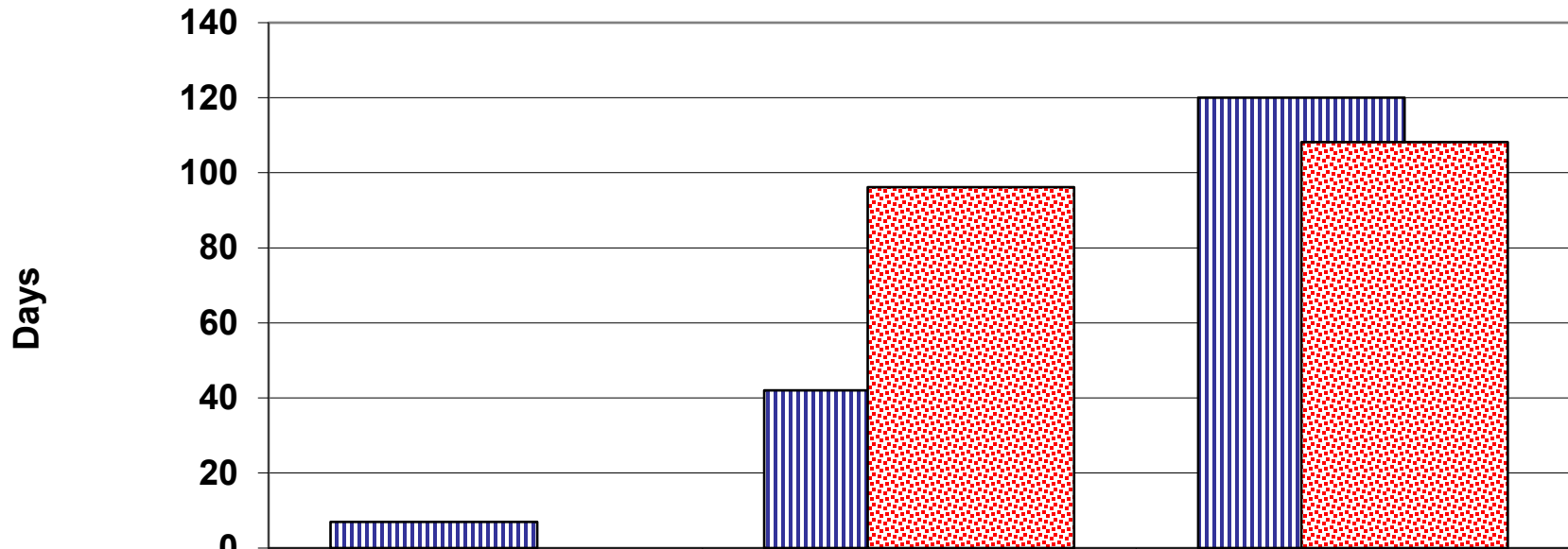


Physical Medicine and Rehabilitation Ambulatory Care Clinic Average Wait Time (Days) QEII Health Sciences Centre, July - September 2023



	Urgent	Semi-Urgent	Non-Urgent
Standard Wait Time	7	42	120
Average Wait Time		96.2	108.1
50th Percentile		91	100
90th Percentile		189.6	232.4
% Within Standard		25%	61%

Source: PHS Data

Prepared by DOM Information Office