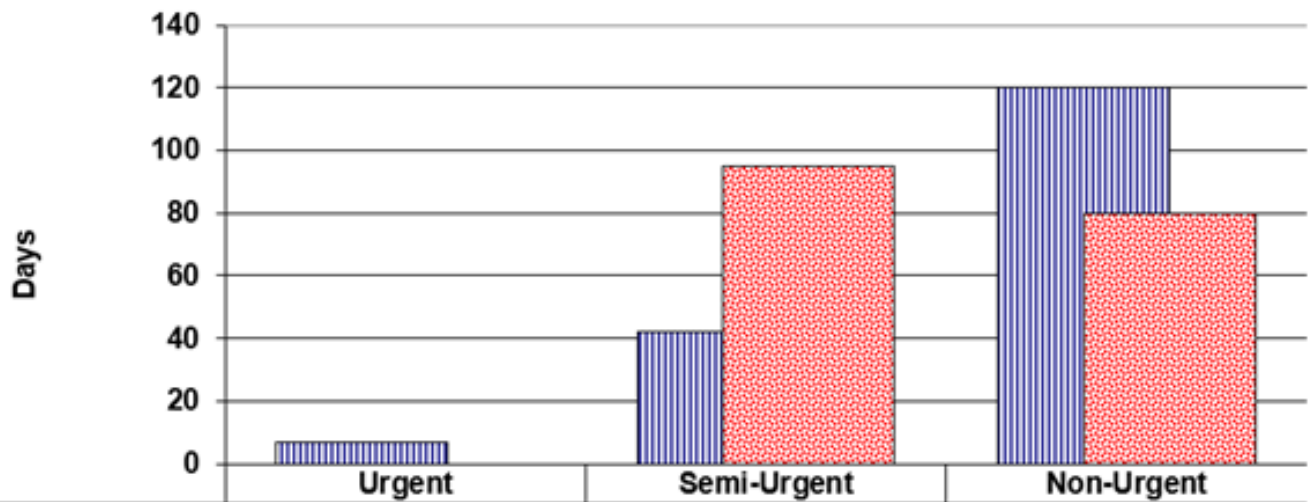


**Physical Medicine and Rehabilitation
Ambulatory Care Clinic Average Wait Time (Days)
QEII Health Sciences Centre, October - December 2023**



	Urgent	Semi-Urgent	Non-Urgent
Standard Wait Time	7	42	120
Average Wait Time		95.1	80.0
50th Percentile		77	34
90th Percentile		216	226.3
% Within Standard		34%	73%

Source: PHS Data

Prepared by DOM Information Office