

HISTORY OF THE DIVISION OF  
ENDOCRINOLOGY AND METABOLISM  
IN THE DEPARTMENT OF MEDICINE,  
DALHOUSIE UNIVERSITY

Meng Hee Tan and Syed Ali Imran

## Introduction

Endocrinology and Metabolism (E&M) at Dalhousie University (Dal) can be traced back to the beginning of the 20<sup>th</sup> century.

Halifax Medical College, organized in 1867 in Nova Scotia (NS), became Dal's Faculty of Medicine in 1911 (1). In 1900, Halifax Medical College's final written examination in Medicine had a question "Describe the important clinical features of diabetes mellitus," implying diabetes was covered in the curriculum then. In the 1911-1912 Dal Faculty of Medicine Calendar, it was recorded "A course of seventy-five lectures in which diseases of the digestive, circulatory, respiratory and genito-urinary systems, blood and ductless glands will be discussed in the third year" (1).

In 1933, when the Dal Faculty of Medicine was formally organized into departments, Dr. Kenneth Mackenzie (1880-1958) was appointed its first Head and Professor of the Department of Medicine (DOM) (1,2). He had been the Head of the Victoria General Hospital's (VGH) DOM since 1928. In 1931, he recruited Dr. Clyde W Holland (1896-1971) as Lecturer in Medicine. In a DOM meeting in 1935, Dr Holland was assigned 12 hours to give lectures on Blood Diseases and Diabetes (1). He was the first general internist interested in E&M we could identify at Dal DOM.

In 1946, when Dr. Holland became the second Dal DOM Professor and Head, he increased the clinical teaching-staff. One of them was Dr. Daniel J Topping (1911-2002), a general internist interested in E&M disorders in Saint John, New Brunswick (NB) (1). Soon after, Dr. Topping became responsible for E&M teaching. Lectures on the "ductless glands" were also added in 4<sup>th</sup> year undergraduate curriculum. When Dr. Holland suffered a major heart attack and resigned as Head in 1952, an Administrative Committee took over the administration of Dal DOM (1,3). One of the 4 committee members was Dr. Martin M Hoffman who had moved to Dal from McGill in 1950 from Montreal, Quebec (QE) (1,4,5). He was another general internist interested in E&M and nephrology.

In the early 1980s, Dal DOM formally introduced the Division system to further develop care, teaching, and research in the sub-specialties of internal medicine. In 1981, the academic Division of Endocrinology & Metabolism (Division) was

formally established. After a national search, Dr. Meng Hee Tan was appointed the first Head of the Division.

This article provides a historical perspective of E&M in Dal DOM from the mid-1930s to 2024. We share information on this internal medicine subspecialty group’s faculty, administration, clinical, education, research programs as well as the faculty’s contributions to society.



## Faculty

General Internists with interest in E&M diseases provided care to patients with these disorders before the Royal College Subspecialty of Endocrinology and Metabolism Certificate of Special Competence examination was introduced in 1985 in Canada.

The 27 physicians who provided E&M care from 1930s to 2025 at Dal are listed in Table 1. A truly international group, they come from 6 countries (Canada, Australia, United Kingdom, Malaysia, Pakistan, and Unites States) and graduated from 12 different medical schools.

Table 1: Physicians who provided care to patients with E&M diseases at Dalhousie 1930s-2025.

Physician	Native of	MD graduate	Faculty at Dal	Postgraduate training	Interests in E&M	Status
1. Clyde W Holland	Halifax, NS	MD Dal 1923	1931-1962	Harvard, Boston	Diabetes mellitus	Retired
2. Daniel J Toning	Saint John, NB	MD Dal 1938	1946-1980	Harvard & McGill	General Endocrinology (Gen Endo)	Retired
3. Martin M Hoffman	Saint John, NB	MDCM 1947; PhD 1943 McGill	1950-1952	McGill	Diabetes mellitus (Diabetes)	Resigned to return to McGill
4. William I Morse	Paradise, NS	MD Dal 1945	1950-1966	Harvard & McGill	Gen Endo	Resigned to practice in Yarmouth.

5. John E Bethune	Berwick, NS	MD Dal 1953	1958-1961	McGill, Harvard & Univ College Hosp, London, UK	Calcium metabolism disorders	Left for Univ Southern California.
6. William C Nicholas	Canso, NS	MD Dal 1958	1964-1971	St. John's, Toronto, & Middlesex Hosp, UK	Gen Endo	Left for McMaster
7. Samuel E York	Hartford, NB	MD Dal 1959	1965-2002	Toronto	Calcium metabolism disorders, Gen Endo	Retired
8. E Carl Abbott	Wesleyville, NL	MD Dal 1959	1969-2008	Toronto, Middlesex Hosp. UK	Hypertension, adrenal disorders, Gen Endo	Retired
9. Allan H Shlossberg	Halifax, NS	MD Dal 1964	1971-2003	McGill, U Sussex, UK. Toronto.	Gen Endo, pituitary disorders.	Retired
10. Sonia R Salisbury	Montreal, QE	MDCM McGill 1959	1973-2010	McGill	Pediatric endocrinology	Retired
11. Meng Hee Tan	Kuala Pilah, Malaysia	MD Dal 1969	1975-1996	Harvard & UC San Francisco	Diabetes, dyslipidemia, & Gen Endo	Left for Becton Dickinson
12. Roger S Rittmaster	Camden, ME	MD Tufts 1976	1985-1999	Maine Med Center & National Institutes of Health	Androgen metabolism, & hirsutism	Left for Glaxo Smith Kline
13. Sethu K Reddy	St. Johns, NL	MD MUN 1980	1988-1995	Memorial, Toronto & Harvard	Diabetes & Gen Endo	Left for Cleveland Clinic
14. Elizabeth A Cowden	Glasgow, UK	MBBS Glasgow 1970	1996-2005	Glasgow & Manitoba	Pituitary disorders & Hyperprolactinemia	Returned to Manitoba
15. Richard S Rowe	Adelaide, AU	MBBS Adelaide 1970	1996-2005	Dal, Toronto & Manitoba	Gen Endo	Returned to Manitoba
16. Ehud Ur	London, UK	MBBS London 1982	1997-2008	St. Bartholomew Hospital, London	Obesity, Pituitary disorders, Diabetes & Dyslipidemias	Left for U British Columbia
17. Jack R Wall	Adelaide, AU	MBBS Adelaide 1967 PhD London 1977	1998-2002	Adelaide AU, Guys Hosp, UK, Harvard & Tufts.	Thyroid disorders	Left for Napean Clinical School, Sydney, AU
18. Shirl Gee	Calgary, AB	MD Alberta 1995	2001-present	Dal & McGill	Gender identity, Reproductive & Gen Endo.	Current faculty
19. Stephanie M Kaiser	Fredericton, NB	U Toronto 1984	2002-2023	Memorial & McGill	Bone disorders & Gen Endo	Retired

20. Syed Ali Imran	Lahore, Pakistan	MBBS Punjab 1987	2002 - present	Yorkshire Deanery, UK & Dal	Pituitary disorders, & thyroid disorders	Current Head of Division
21. Thomas P Ransom	Toronto, ON	MD Toronto 1998	2003- present	Toronto & Dal	Obesity, Gen Endo & dyslipidemias	Current faculty
22. Barna De	Chicago, USA	MD Harvard 1998	2012-present	Harvard & Dal	Gen Endo & diabetes	Current faculty
23. Dale Clayton	NB	MD Dal 2003	2008-2010	Dal	Gen Endo	Left for private practice in BC.
24. Churn-Ern Yip	Calgary, AB	MD St George's Med School 2006	2012-present	Alberta & Dal	Gen Endo & male hypogonadism.	Current faculty
25. Ferhan Siddiqi	Halifax, NS	MD Toronto 2008	2014-present	Dal & Toronto	Gen Endo & adrenal disorders.	Current faculty
26. Vicki Munro	Edmonton, AB	MD Alberta 2011	2021 present	Dal	Gen Endo & thyroid disorders	Current faculty
27. Nadine Vaninetti	Dominion, NS	MD Dal 2012	2024-present	Dal	Gen Endo & bone disorders	Current faculty

Figure 1. Early Faculty Members – left: Dr. Clyde W Holland & right: Dr. Martin M Hoffman

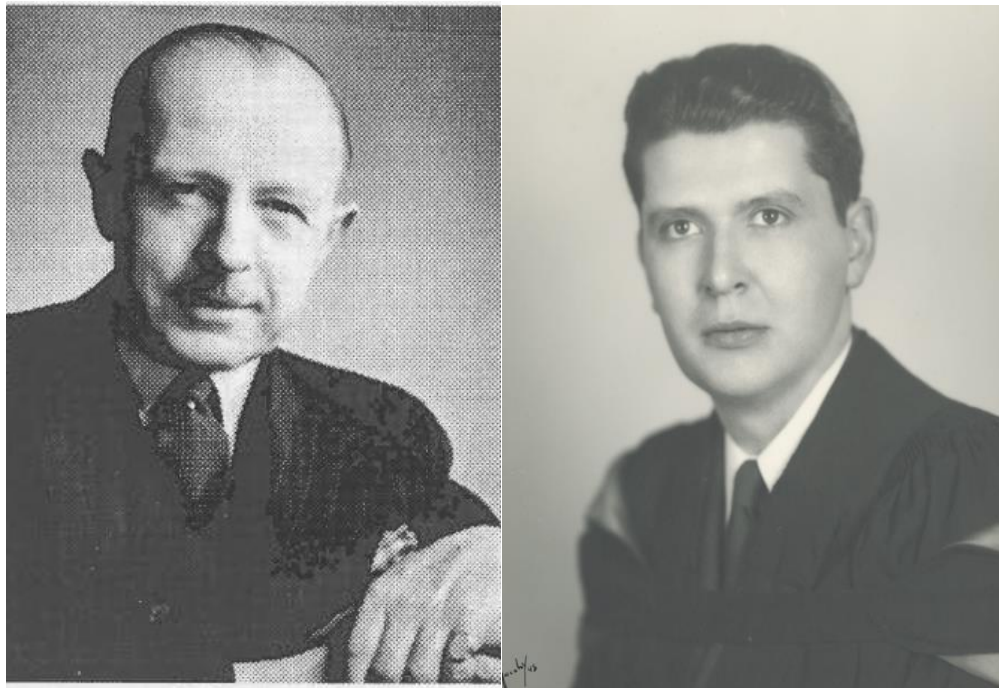


Figure 2. Founding Faculty of Division in 1981



Left to right: Drs. Meng Hee Tan, Samuel E York, E Carl Abbott, Allan H Shlossberg, and Sonia R Salisbury

Figure 3. Current Division Faculty in 2025.



Front row: Left to right: Drs. Vicki Munro and Shirl Gee  
Back row: Left to right: Drs. Ferhan Siddiqi, Barna De, Ali Imran, Tom Ransom, Nadine Vaninetti, and Churn Yip.

The Division has greatly benefitted from collaborating with multiple clinical and non-clinical services/departments to expand its clinical, teaching and research mandate. In 1981 Dr. Morris Givner (Pathology) was cross-appointed with the Division. Currently, Drs. David B Clarke (Neurosurgery), Younus Anini (Physiology

and Obstetrics & Gynecology), S, Raza Abidi (Computer Sciences), and Remigius Agu (Pharmacology) have cross appointments with the Division.

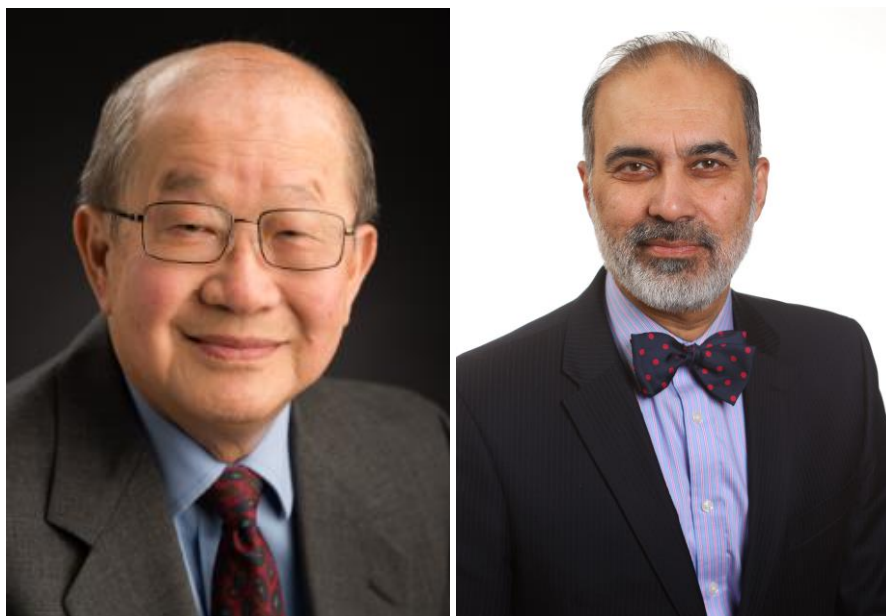


## Administration Leadership

The Dal DOM established the subspecialty divisions system to enhance patient care, education and research in each internal medicine sub-specialty in the early 1980s. Since its inception in 1981, there have been 6 Heads of the Division:

- |                                |               |
|--------------------------------|---------------|
| 1. Dr. Meng Hee Tan            | 1981-1996     |
| 2. Dr. Samuel E York (Interim) | 1996-1998     |
| 3. Dr. Jack R Wall             | 1998-2002     |
| 4. Dr. Ehud Ur                 | 2002-2008     |
| 5. Dr. Stephanie Kaiser        | 2009-2020 and |
| 6. Dr. Syed Ali Imran          | 2021-present  |

Figure 4. First and Current Division Heads Left: Dr. Meng Hee Tan and right: Dr. S Ali Imran



The Division established a Subspecialty of Endocrinology and Metabolism Certificate of Special Competence training program in 1986. The Division's Training Program Directors, since inception, include

Dr. Meng Hee Tan	1986-1988
Dr. Sethu K Reddy	1988-1995
Dr. Ehud Ur	1997-2002
Dr. Stephanie M Kaiser	2003-2013
Dr. Shirl Gee	2013-2020 and
Dr. Churn-Ern Yip	2020 – present



## Clinical Program

Before 1981, the Division's clinical program consisted of both in-patient and ambulatory care clinics and services.

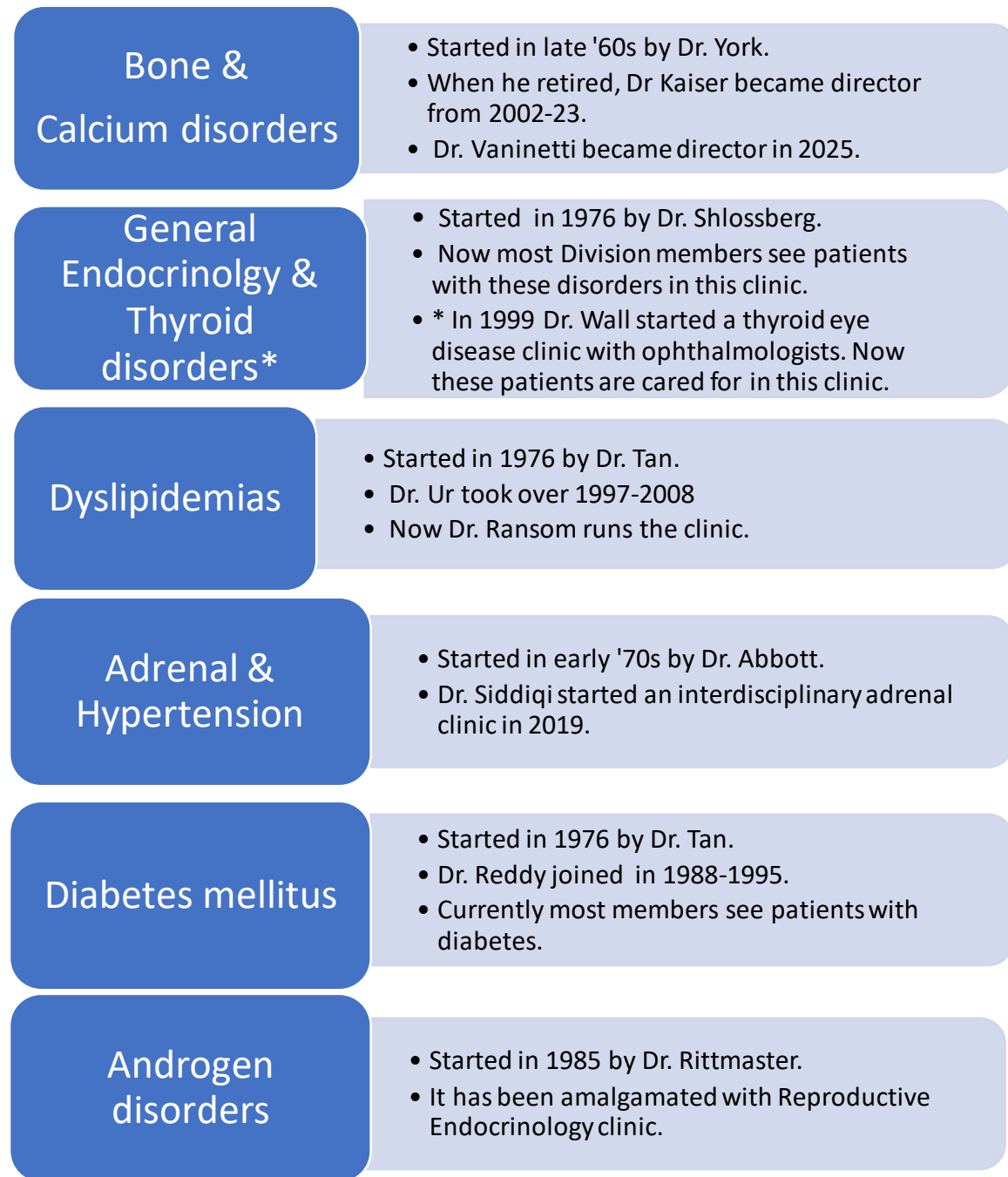
### **In-patient consultation service:**

In the 1950s, there was a 4-bed Metabolic Unit in the VGH West Annex. Relocated in the early 1970s to Ward 3B of the main hospital, it remained operational till 1981. That year, with re-distribution of in-patient beds in the DOM, the Division's in-patient beds were discontinued, transforming the Division into a consultation service for in-patients at the 3 teaching hospitals together with ambulatory care clinics.

### **Ambulatory care clinics service:**

Ambulatory care is provided in hospital clinics (in the 20<sup>th</sup> and 21<sup>st</sup> Century) and faculty members' private practices (in the 20<sup>th</sup> Century only). Teaching of students, residents and fellows occur at both. The field of E&M has evolved with a rapid expansion in diagnostic and therapeutic options as well as advances in molecular biology, technology, digitization, and artificial intelligence. These changes led to the expansion of E &M with more sub-specialty clinics (Figure 5).

Figure 5. Division's Ambulatory Care Clinics



<p><b>Diabetes Pregnancy</b></p>	<ul style="list-style-type: none"> <li>• Started in 1992 by Drs. Shlossberg, Tan &amp; Obstetricians.</li> <li>• The clinic is now administered by Drs. Ransom, Gee &amp; Obstetricians.</li> </ul>
<p><b>Neuro-pituitary disorders</b></p>	<ul style="list-style-type: none"> <li>• Started in 2001 by Drs. Ur and Imran (Endocrinology) &amp; Drs. Clarke and Holness (Neurosurgery).</li> <li>• Clinic is now run by Drs. Imran and Clarke.</li> </ul>
<p><b>Thyroid Cancer</b></p>	<ul style="list-style-type: none"> <li>• Started in 2005 by Drs. Imran and Rajaraman (Radiation oncology).</li> <li>• Dr. Kaiser joined in 2014 and Dr Munro in 2021.</li> </ul>
<p><b>Obesity</b></p>	<ul style="list-style-type: none"> <li>• Started in 1997 by Dr. Ur, the clinic is now run by Dr. Ransom.</li> </ul>
<p><b>Reproductive Endocrinology &amp; Gender Identity Disorders</b></p>	<ul style="list-style-type: none"> <li>• Started in 2001 by Dr. Gee, the clinic cares for patients with various reproductive disorders.</li> <li>• Dr. Yip now follows men with reproductive disorders.</li> </ul>
<p><b>Thyroid Biopsy Thyroid ablation</b></p>	<ul style="list-style-type: none"> <li>• Thyroid biopsy clinic was initially started by Dr. Imran in 2005 and is now run by Dr. Munro. This service has now expanded to include radiofrequency ablation of thyroid nodules.</li> </ul>

The Division started a community endocrinology service in the late 1990s when Drs. Shlossberg and Abbott set up private offices in the community until they retired. Currently, in the Maritimes, there are up to 10 (the number fluctuates) community endocrinologists who are also affiliated with Dal.

There are 2 ambulatory endocrine services – Endocrine Testing Unit and Diabetes Education Center.

### **Endocrine Testing Unit**

Before 1981, patients were admitted as in-patients for endocrine testing. With the growing need for endocrine testing, the Ambulatory Endocrine Testing Unit, staffed by a full-time nurse, was first established in 1986 and based in Halifax Infirmary (HI). The unit is currently staffed by two senior nurses and provides dynamic endocrine testing service for the Division as well as community endocrinologists. The Division has developed standardized endocrine testing protocols in conjunction with the Department of Clinical Biochemistry, which are used by various Endocrinology clinics in Atlantic Canada.

### **Diabetes Education Center**

In 1976 the first dedicated interdisciplinary Diabetes Education Center was established at VGH. The team comprised a physician (Dr. Tan), 2 nurse educators and a dietitian. One of the nurse educators focused on in-patients. This was a major milestone in diabetes care delivery and paved way for multiple ensuing diabetes education programs in Atlantic Canada.

In 1986, when the Division was physically relocated from the VGH to HI, so did the Diabetes Education Center. This expanded to become the Nova Scotia Diabetes Center with 3 physicians (Drs. Tan, York & Reddy), 2 dietitians, 3 diabetes nurse educators, and 5 other part-time staff (clinical psychologist, social worker, pharmacist, chiropractor and occupational therapist). A new full-time dietitian, devoted exclusively to dietary management of lipid disorders was also appointed and based in HI.

The Diabetes Education Center evolved and expanded over time into a stand-alone service based in the community, and under the Department of Health, Division members provide input into its operation. Also, to improve inpatient care and discharge planning of patients with diabetes, the Division established the inpatient diabetes care manager service which is currently staffed by two experienced certified diabetes educators.

## Division's Physical Location

When the Division was first established in 1981, it was based at the VGH. In 1986, the Division was physically relocated to the old HI when Dr. Tan was appointed Head of the Department of Medicine there. The Endocrinology and Diabetes/Dyslipidemias Clinics also relocated from VGH to HI.

In 1988, when the HI and Camphill Hospital (CHH) merged to become the Camp Hill Medical Center (CHMC), the Division's physical location remained unchanged. When the VGH and CHMC merged in 1997 to become the Queen Elizabeth II Health Sciences Center, the Division was relocated to the VGH campus shortly after. Due to expansion of the Halifax Metro area, the Division initiated various off-site clinics including sites at Bayer's Lake and Cobequid in Sackville.



## Education Program

The Division maintains a strong education program in keeping with the evolving clinical demands. We provide undergraduate, postgraduate and continuing medical education (CME) as Dal Faculty of Medicine members, sharing our knowledge and clinical expertise while learning from students, residents and physicians (Figure 6).

Figure 6. Division's Education Programs:

### **Undergraduate Education:**

All Division faculty members participate in the bedside teaching of medical students as part of Dalhousie's core MD Curriculum

All teach undergraduate students E&M in the Faculty of Medicine.

In addition, some members also teach in the Faculty of Dentistry and Faculty of Health Professions.

The Division offers in E&M electives to undergraduate students.

### **Post-graduate education:**

Dalhousie's Training Program for the Certification of Special Competence in E&M was one of the first programs to be established in Canada in 1986, shortly after the approval of the subspecialty examination for E&M by the Royal College in 1985.

For residents who have completed 3 years of accredited internal medicine training, the Division offers a two-year subspecialty E&M residency training accredited by the Royal College of Physicians & Surgeons of Canada. We also offer Fellowship training in E&M for sub-specialists.

The Division has also been actively involved in teaching specialty physicians seeking higher training. In 2015, Dr. Imran established a 12-month Dal accredited subspecialty fellowship program in Neuro-pituitary disorders and Thyroid cancer. Several international physicians have completed the fellowship and are working experts in various countries.

Between 1986 -2024, we trained 42 residents and 7 fellows. Our trainees have established successful careers both in community and academic settings (Figures 7 & 8)

We also train IM residents who wish to do an E&M elective. In addition, we also have residents rotate through our division from other disciplines, such as Nuclear Medicine, Obstetrics & Gynecology, Psychiatry and Ophthalmology.

### **Continuing Medical Education**

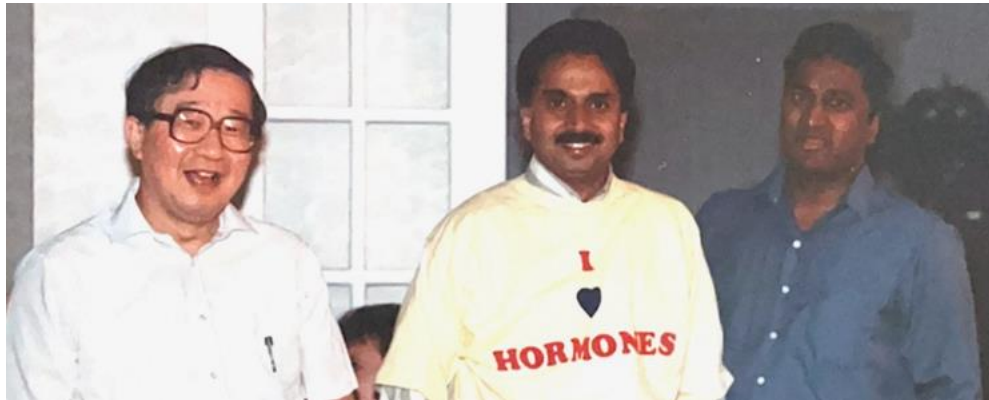
The Division's faculty participate in Dal's CME Programs related to E&M at the local, regional, national and international levels.

Annually, we present more than 40 sessions on a range of topics to family physicians, specialists, community-based endocrinologists, and other health professionals.

Since 1986 and 1990, the Division, together with Dal CME, have offered refresher courses in diabetes and endocrine disorders (Figure 9).

We also provide public education through community groups and provincial organizations.

Figure 7. Training Residents and Fellows in Endocrinology & Metabolism



Left to right: Drs. Tan, Nath and Reddy

Figure 8. Current staff members and trainees (2005)



Left to right: Drs. Churn Yip, Ferhan Siddiqi, Nadine Vaninetti, Barna De, Shirl Gee, S. Ali Imran, Vicki Munro, Joanna Mader, Sarah Howse, Josh Low and Tom Ransom.

Figure 9: Diabetes Mellitus in the 1990 Refresher Course Faculty



With the initiation of Dal Medicine NB in 2010, the community-based endocrinologists in NB have been involved in teaching the undergraduate students and post-graduate residents in NB.



## Research

### Clinical and Basic Research

Research is an integral component of any academic division. The spectrum of research done by Division members is broad and wide (Table 2).

**Table 2. Faculty Research in the Division**

<b>Faculty</b>	<b>Research interests and publications when at Dal</b>
Daniel J Toning	Clinical - Metabolism
Martin M Hoffman	Clinical - Diabetes
William I Morse	Clinical – Hypoparathyroidism, Gonads, Obesity
Jack E Bethune	Clinical – Hypophosphatasia, adrenal
William C Nicholas	Clinical – General endocrinology
Sam E York	Clinical – Calcium disorders, thyroid
E Carl Abbott	Clinical - Adrenal and hypertension, thyroid
Allan H Shlossberg	Clinical - Pituitary, thyroid, adrenal. Collaborated with Neurosurgery.
Sonia R Salisbury	Clinical - Growth hormone, thyroid, pediatric endocrinology

Meng Hee Tan	Basic & Clinical - Diabetes, dyslipidemias & thyroid. Collaborated with Biochemistry, Kinesiology. Preventive Medicine & Community Health, Cardiology.
Morris L Givner	Clinical - Hormones
Roger S Rittmaster	Basic & Clinical - Hirsutism, prostate cancer, androgen metabolism disorders. Collaborated with Biochemistry, Physiology & Urology
Sethu K Reddy	Basic & Clinical - Diabetes, thyroid
Elizabeth A Cowden	Clinical - Thyroid, prolactin
Richard S Rowe	Clinical - Diabetes
Ehud Ur	Basic & Clinical - Pituitary, obesity, diabetes, dyslipidemias Collaborated with Physiology and Neurosurgery.
Jack R Wall	Basic & Clinical -Thyroid eye disease. Collaborated with Ophthalmology.
Shirl Gee	Clinical -Reproductive endocrinology
Stephanie Kaiser	Clinical – Osteoporosis & metabolic bone disorders.
S Ali Imran	Basic & Clinical - Neuro-pituitary disorders and central adipokine signaling, thyroid cancer, Collaborates with Neurosurgery, Radiation Oncology & Physiology, Obstetrics & Gynecology
Tom Ransom	Clinical - Nutrition, dyslipidemias, obesity, diabetes.
Barna De	Clinical - Diabetes care delivery
Churn-Ern Yip	Clinical - Technology in diabetes care delivery
Ferhan Siddiqi	Basic & Clinical - Epigenetics of diabetes kidney disease in collaboration with group at U Toronto, Quality Improvement
Vicki Munro	Clinical -Thyroid, pituitary
Nadine Vaninetti	Clinical - Bone disorders

In the 1950s and 1960s, research in the Division was mainly clinical. From the mid-1970s on, basic research became an integral part of the Division's research program, often done in collaboration with other Dal faculties (Kinesiology), other Medical School departments including, but not limited to, Biochemistry, Neurosurgery, Obstetrics & Gynecology, Pathology, Physiology, Community Health & Epidemiology, Surgery, and Urology, and other DOM Divisions (Cardiology, General Medicine).

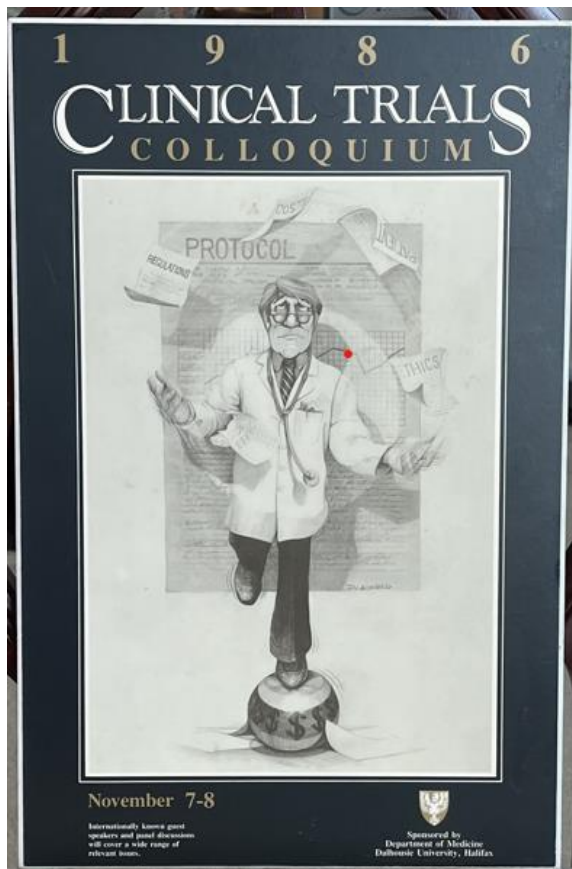
Drs. Tan and Reddy were cross-appointed in the Department of Biochemistry where their research laboratories were located. Drs. Ur and Imran ran a basic science laboratory with Dr. Michael Wilkinson (Department of Physiology and Obstetrics and Gynecology). Currently, Dr. Imran is cross-appointed in Departments of Obstetrics & Gynecology and Surgery (Neurosurgery), and Dr. Siddiqi with Physiology.

In 2022, the Division established a peer-reviewed internal research start-up fund for all Division members and trainees to promote research.

## Clinical Trials

Interest in multicenter clinical trials blossomed in the 1980s at Dalhousie. The first Canadian Clinical Trials Colloquium was held in Halifax in 1986 (Figure 10). It was organized by the Dal DOM Research Committee, chaired by Dr. Tan.

Figure 10. The First Canadian Clinical Trials Colloquium



The Division now has a well-established and robust clinical trials program and in 2024-25 brought in over \$2 million in research funding. From 1980s onwards, the Division has participated in key national/international trials for diabetes and lipid disorders (Dr. Tan, Ur, and Ransom), hirsutism (Dr. Rittmaster), bone disorders (Dr. Kaiser), pituitary disorders and thyroid cancer (Dr. Imran) and adrenal disorders (Dr. Siddiqi). Together the Division's clinician-scientists and their research coordinators have enabled our patients to benefit from cutting edge research in both diabetes and Endocrinology.



## **Giving back to Society**

### **Professional and Community Contributions in Endocrinology & Metabolism**

Division members have and continue to provide leadership at E&M national and international forums, including, but not limited to,

#### **Subspecialty of Endocrinology & Metabolism in Canada**

Prior to 1980s, E&M was not recognized as a subspecialty by the Royal College of Physicians of Canada. Dr. Salisbury played a key role in the Canadian Society of Endocrinology and Metabolism's negotiations with the Royal College to establish E&M as a subspecialty in Canada. As a result, The Royal College Subspecialty of Endocrinology and Metabolism Certificate of Special Competence was approved in 1983 in Canada, and the first examination of this subspecialty certificate was held in 1985.

#### **Royal College Specialty for Endocrinology & Metabolism:**

Three Division members served on the Royal College Specialty Board Exam for E&M: Dr. Salisbury from 1985-1987, Dr. Tan from 1987 to 1992 and Dr. De from 2015-present. Two Division members served on the Royal College Endocrinology & Metabolism Subspecialty Committee: Dr. Tan was a member from 1987 to 1996 and Dr. Kaiser was Chair 2004-2010.

#### **Canadian Society for Endocrinology & Metabolism:**

Three Division members served as President of the Canadian Society of Endocrinology & Metabolism: Dr. Salisbury (1984-1986), Dr. Rittmaster (1998-1999) and Dr. Kaiser (2013-2015).

The Division has maintained a strong role at the national endocrine stage with Drs. Imran, Siddiqi, and Munro holding various council or executive positions at the Canadian Society of Endocrinology and Metabolism.

### **Diabetes**

Dr. Tan was President of the Canadian Diabetes Association (1989-1991), Vice-President of the International Diabetes Federation (1991-1997), and first Chair, Canadian Diabetes Advisory Board for Health Canada (1988-1995).

Dr. Tan chaired the Expert Panel of the first Canadian Consensus Conference on “Clinical Practice Guidelines for Management of Diabetes Mellitus” in 1991-1992 (6). Since then, Division members (Drs. Imran and De) played key roles in expanding diabetes care including establishing national and regional diabetes care guidelines (7,8).

Dr. Tan was an advisor on diabetes to World Health Organization from 1992-1995.

Dr. Ur was Chair of the Clinical & Scientific Section of Diabetes Canada in 2006/2007.

### **Fertility and Andrology**

Dr. Rittmaster was President of the Canadian Fertility and Andrology Society (1993-1994)

### **Osteoporosis**

Dr. Kaiser was a Member of Executive (1999–2000 and 2004–20) of Osteoporosis Canada.

### **Thyroid**

Drs. Imran and Munro have been involved in establishing national thyroid cancer guidelines and along with Dr Rajaraman are members of a national thyroid cancer consortium.

### **Regional Programs – The Atlantic Endocrine Society**

In 1990, Drs. Rittmaster and Carol Joyce (Memorial University) discussed the formation of the Atlantic Endocrine Society (AES) (Figure 11). They organized the inaugural Atlantic Endocrine Society Conference, bringing together physicians and

scientists interested in E&M for a weekend conference at Dal. The AES has continued with annual conferences rotating through various Atlantic provinces and is strongly supported by the Atlantic endocrine community. The conference provides a venue for local clinical and research faculty to interact with national and international speakers invited to the meeting.

The AES continues as an annual meeting and the 2025 meeting was held in Nova Scotia.

Figure 11. Atlantic Endocrine Society Conferences: 1992 at Oak Island (top), 1993 at St. John's (middle), and 1999 at Bar Harbor (bottom).



## **Provincial Program – Diabetes Care Program of Nova Scotia**

In 1990, the Nova Scotia Department of Health requested Dr. Tan to address the issue of different approaches used by many Diabetes Education centers in the Province. In 1991, the Department of Health established the Diabetes Care Program of Nova Scotia (DCPNS) to standardize diabetes education programs across the province (9). Dr. Tan was the founding Medical Director (1991-1996) and Dr. Shlossberg represented the Dalhousie Faculty of Medicine in the DCPNS Board of Directors. Dr. Salisbury became the 2<sup>nd</sup> Medical Director of DCPNS in 1997. Over the years, Drs. Ur, Imran, Ransom, De, Siddiqi and others have participated with DCPNS in various roles.



## **Chapter Eternal**

We remember colleagues who left footprints in the Division's journey and have gone before us:

Dr. Clyde W Holland (1896-1971)  
Dr. Daniel J Topping (1911-2002)  
Dr. Martin M Hoffman (1916-1983)  
Dr. William I Morse (1923-2004)  
Dr. Jack E Bethune (1927-2018)  
Dr. Allan H Shlossberg (1939-2008)  
Dr. Sonia R Salisbury (1935-2021)  
Dr. E Carl Abbott (1936-2024)



## **In closing**

The full-time members of the Division grew from the early 1950s (3 internists) to the early 1980s (5 internists) to 2024 (8 full or part time Royal College of Canada certified endocrinologists). In the early 1980s there was 1 cross-appointee from Pathology; and in 2024 there are 4, one each from Neurosurgery, Physiology and Obstetrics & Gynecology, Computer Sciences, and pharmacology. In addition, several community endocrinologists are now affiliated with Dal.

With the increase in undergraduate medical students, residents, post-graduate trainees, and practising physicians served by Dal Faculty of Medicine, the increase in number of Division faculty was needed to meet the educational needs.

The Division's ambulatory care clinics has evolved into many subspecialty clinics in hospital.

In the 1950s the main focus on the Division's research was clinical. Today, the research is both basic and clinical. Since the 1980s, conducting clinical trials had been growing and the Division is a major site in national and international multicenter clinical trials.

Finally, Division members have given back to society by assuming leadership roles in various national E&M societies and regional organizations.



## **Acknowledgement**

We would like to thank Drs. Sam E York, William C Nicholas, Sethu K Reddy, Roger S Rittmaster, Morris L Givner, Jock T Murray, Carol Joyce, and Brian B Hoffman for providing information in the writing this article.

In Figure 1 Dr. Holland's photo is adapted from Reference 1 and Dr. Hoffman's photo is courtesy of Dr. Brian B Hoffman.



## References

1. Steeves LC. A History of Department of Medicine, Dalhousie University. Published by the Department of Medicine. Dalhousie University, Halifax, Nova Scotia. 1995.
2. <https://medicine.dal.ca/departments/department-sites/medicine/about.html>.
3. Murray TJ. Post war Medical Education. *In Noble Goals Dedicated Medical Doctors. The Story of Dalhousie Medical School*. Nimbus Publishing Limited, 2017, p166-
4. Announcement in Nova Scotia Medical Bulletin 28(5), 1949. P 140.
5. Steeves LC. Martin Mendel Hoffman, First Research Professor of Medicine, Dalhousie Department of Medicine 1950-1952. Presented on May 5, 1994 at Department of Medicine Research Day.
6. Expert Committee of the Canadian Diabetes Advisory Board. Clinical practice guidelines for treatment of diabetes mellitus, *Can Med Assoc J* 1992; 147:697-712.
7. Diabetes Canada Clinical Practice Guidelines Expert Committee; Imran SA, Agarwal G, Bajaj HS, Ross S. [Targets for Glycemic Control](#). *Can J Diabetes*. 2018 Apr;42 Suppl 1: S42-S46.
8. Diabetes Canada Clinical Practice Guidelines Expert Committee; McGibbon A, Adams L, Ingersoll K, Kader T, Tugwell B. [Glycemic Management in Adults with Type 1 Diabetes](#). *Can J Diabetes*. 2018 Apr;42 Suppl 1: S80-S87.
9. Payne Jennifer I, Margaret J Dunbar, Pamela Talbot, Meng H Tan. Diabetes Care Program of Nova Scotia: Celebrating 25 years of Improving Diabetes Care in Nova Scotia. *Can J Diabetes* 2018; 42(3): 317-324.

