

2023 UGME Orientation

August 22, 2023

Office of Community Partnerships and Global Health



DALHOUSIE
UNIVERSITY

FACULTY OF MEDICINE
Office of Community
Partnerships and Global Health

Agenda

1. Welcome, Land Acknowledgement, and Overview
2. Program Introduction and Highlights
3. Activity
4. Discussion and Q&A
5. Break
6. Public Health Presentation with Dr. Watson-Creed



Serving & Engaging Society

Where the Faculty of Medicine and Community Meet

Strategic priority for the Faculty of Medicine

Embedded across curriculum, research, policy
and community engagement



Community Partnerships & Global Health

Our Vision

Healthier
communities

What We Value

- Respect
- Collaboration
- Accountability





SES & CPGH Team

Dr. Gaynor Watson-Creed, Associate Dean

Dr. Shawna O'Hearn, Director

Michelle Patrick, Associate Director

Jessica Kerr, Administrative Assistant

Gwen Bartleman, Special Projects Manager

Jen LeBlanc, Outreach Coordinator

Academic Directors:

Dr. Leah Jones (Black Health)

Dr. Brent Young (Indigenous Health)

Program Managers:

Timi Idris (Promoting Leadership in health for ANS)

Faith Julien (Keknu'tmasiek Ta'n Tel Welo'ltimk)

Jen LeBlanc (Francophone Health)

Sarah Peddle (Community-Engaged Service Learning)

Elise Sammons (Planetary Health/Global Health Education)



Program Introductions



Elise Sammons
(she/her)

Planetary Health

Elise Sammons (she/her),
Program Manager

What is planetary health?

A solutions-oriented, transdisciplinary field and social movement focused on analyzing and addressing the impacts of human disruptions to Earth's natural systems on human health and all life on Earth.





Planetary Health

- Planetary Health Committee
- Dal Med Green Team
- IPE Minicourse on Sustainable Health Systems
- CASCADES Summer Institute on Sustainable Health Systems
- **October 30** – Dr. Tarunendu Ghose Visiting Scholar Dr. Andrea MacNeill





Global Health Education



Dalhousie Med Students have done electives in South Africa, New Zealand, Tanzania, India, Uganda, Australia, Thailand, Austria, Malaysia, Germany

International Electives

- Global Health Initiative (GHI)
- Events and educational opportunities (sign up for our bulletin!)
- Global Health Awards
- Interested in international electives, contact elise.sammons@dal.ca



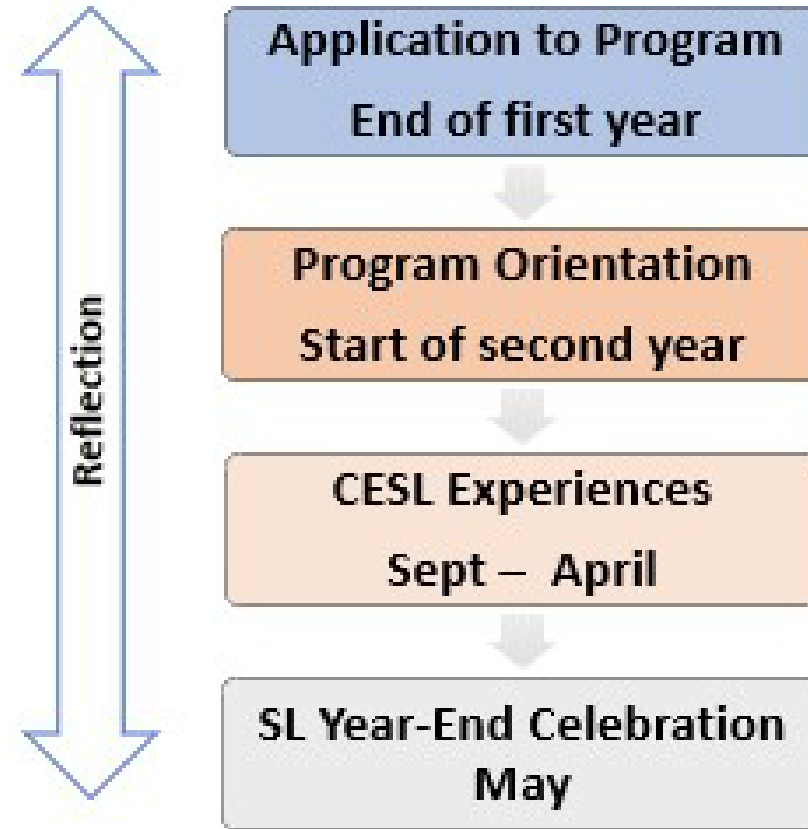
Community-Engaged Service Learning

Sarah Peddle (she/her),
Program Manager





Community-Engaged Service Learning



- Workshop on December 5th in ProComp I
- Optional
- Minimum of 20-30 hours over two terms
- MEDI 2612 appears on your transcript



Faith Julien
(she/her)

Dr. Brent Young's Video (2 parts)

- Video 1: https://prezi.com/v/_yz-b0vghl2/indigenous-health/?preview=1
- Video 2: <https://prezi.com/v/4uxosxtk2jj7/indigenous-health-2/?preview=1>





Keknu'tmasiek Ta'n Tel Welo'Itimk

(pronounced: gag-new-d-muss-seeg
don dell well-oh-l-dim-k)

"We are learning to be well"

Faith Julien (she/her), Program Manager

Dr. Brent Young (he/him), Academic Director

Shayla Gloade (she/her), Program Assistant



Keknu'tmasiek Ta'n Tel Welo'Itimk (KW) will become a central gathering point among a network of support, knowledge, and training related to Indigenous health in Wabanaki.

Our Mission

To support healthy Indigenous communities across Wabanaki and beyond through medical education that is based on Etuaptmunk - two-eyed seeing



Keknu'tmasiek Ta'n Tel Welo'Itimk

kw@dal.ca



@kw.dal



@ihim.dal

- Bursaries & Scholarships
- Mentorship & Academic Support
- Connecting with Culture
- Connecting with community
- Building Knowledge & Skills
- Indigenous Health Elective Program
- KW Annual Gathering
- Elder Support
- Sharing circles





Indigenous Health

Indigenous Admissions Pathway

- Mi'kmaw, Wolastoqiyik, Peskotomuhkati, and other Indigenous people face unique and unjust barriers in their journey to medical school
- Identify and eliminate barriers
- Indigenous Admissions Subcommittee

Indigenous Community Engagement

- Mawio'mi
- Health gatherings
- Indigenous Physicians Association of Canada (IPAC) AGM





Promoting Leadership in health for African Nova Scotians

Timi Idris (she/her), Program Manager
Dr. Leah Jones (she/her), Academic Director

PLANS seeks to increase representation of people of African descent across the health professions through recruitment and retention, community collaborations and partnerships that foster a pathway of equity and support.

Goals

- The recruitment and retention of Black students within the Faculties of Medicine, Dentistry, and Health
- Improve health outcomes within the communities





Promoting Leadership in health for African Nova Scotians

PLANS@DAL.CA

 PLANS.Dal  PLANS_Dal



- Sophia B. Jones Mentorship Program: Black medical students mentored by Black residents and practicing physicians (**September 7, 2023**)
- Bursaries and scholarships
- Information sessions
- Community events/conferences (BPOC Oct **12-15**)
- 1:1 support/advocacy
- Admission pathways
- Anniversary celebration (**November 9, 2023**)



"African Nova Scotians are a distinct people who descend from free and enslaved Black Planters, Black Loyalists, Black Refugees, Maroons, and other Black people who inhabited the original 52 land-based Black communities in that part of Mi'kma'ki known as Nova Scotia."

Dalhousie African Nova Scotian Strategy

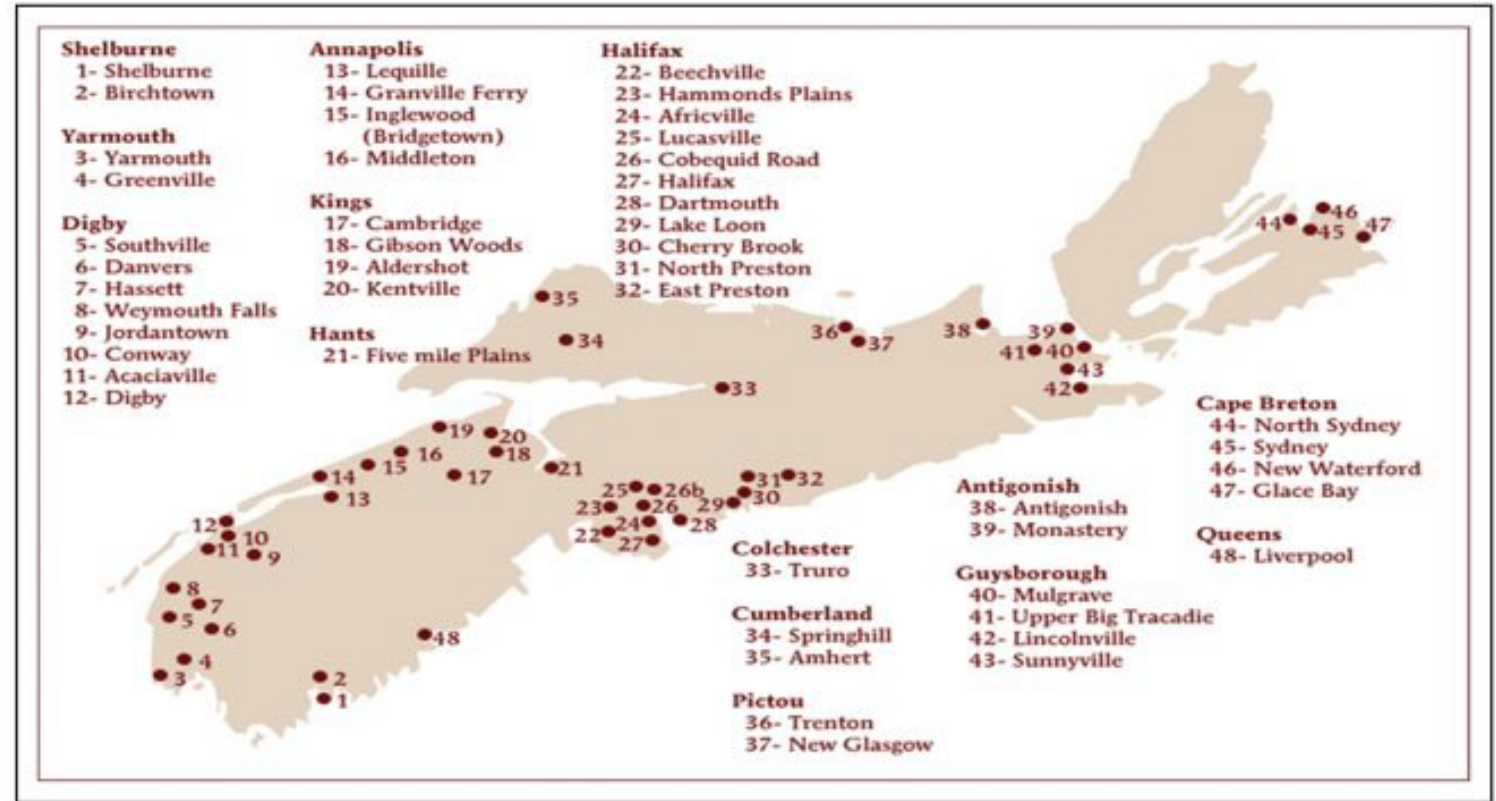


Figure 1. Geographic distribution of historic African Nova Scotian settlements.



Black Health

Black Learners Admissions Pathway (BLAP)

Black Health in the Medical Curriculum

- Curriculum Refresh
- Professional Competencies in Med 2 – Dr. OmiSoore Dryden
- Future BHEC Modules
- Future Black Health Clinical elective

Black Student Support, Advocacy

Community Engagement

- Black Physicians of Nova Scotia
- Nova Scotia Sisterhood and Brotherhood
- Health Association of African Canadians (HAAC)



Francophone Health

Jen LeBlanc,
Program Manager

Focused on recruitment and retention of Francophone and Acadian students to improve French-language health services throughout the Maritimes.

Working to better understand the health context for Francophone and Acadian minority communities in the region and respond through community collaborations and student engagement.



Francophone Health

Jen.LeBlanc@dal.ca

- French in Medicine student group
(Med 2 - Jonah.Sheinin@dal.ca)
- Conversation Café
- Rural Week placement in a
Francophone/Acadian Community



A background image of a tree-lined street with a yellow overlay. The overlay is a large, rounded rectangle with a yellow-to-white gradient. The word "Outreach" is written in bold black text on the yellow part. Below it, a white speech bubble contains the name "Jen LeBlanc, Outreach Coordinator".

Outreach

Jen LeBlanc,
Outreach Coordinator

GHO@dal.ca

- Global Health Awards
- Photo Contest
- Student Writing Competition
- E-Bulletin
- Blog
- Social Media Accounts
[@DalGlobalHealth](https://twitter.com/DalGlobalHealth)
 - Instagram
 - Facebook
 - Twitter/X




Activity

Instructions

To help you learn more about our office and programs, we have prepared case studies similar to what you will encounter in medical school.

For each case

- In your groups, read through the case, discuss, and answer the questions.
 - In the large group, we will debrief and discuss.
- 
- A series of five concentric, curved yellow lines of varying thicknesses, starting from the bottom right and curving upwards and to the left, creating a sense of motion or a stylized graphic element.

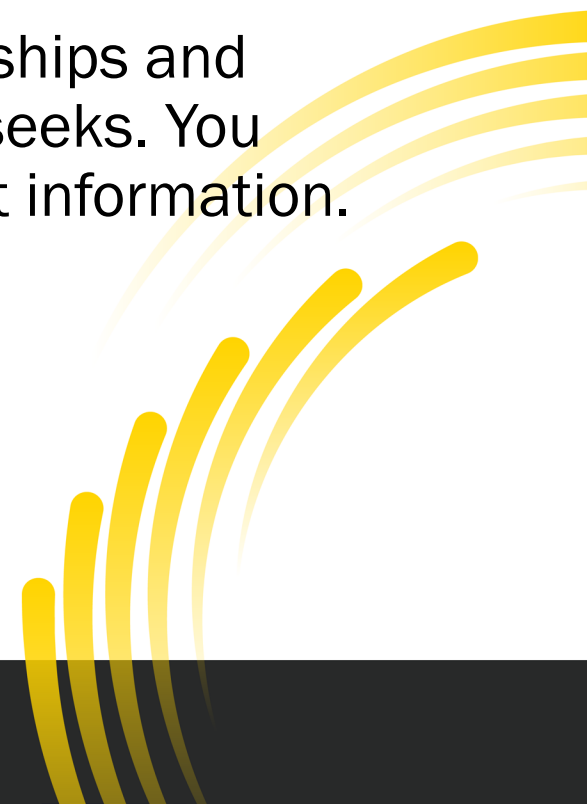
Case #1

Jamal Beals (he/him) is in his first year of medicine. He identifies as a 26-year-old African Nova Scotian cis-gender male from Sydney, Nova Scotia. Jamal completed his undergraduate degree at St FX and his master's degree at Dalhousie University in Biology. During the week, in conversation, Jamal mentions wanting to know more about supports available for Black medical students.

You just met some people from the Office of Community Partnerships and Global Health that would be able to provide Jamal with what he seeks. You want to reach out to them to make sure you're providing the right information.

Who do you reach out to at CPGH to get more information?

What kind of supports do they provide?



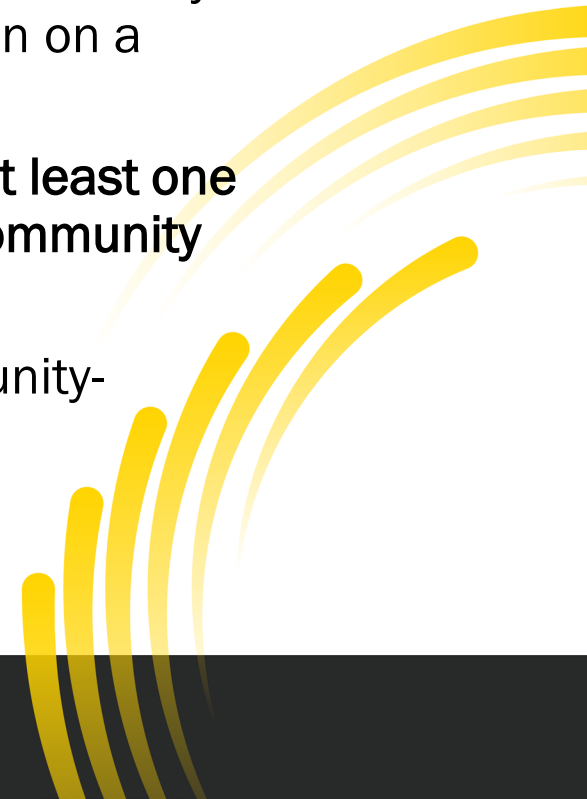
Case #1 - continued

You share the name(s) and information about the types of supports and services available through the office. Jamal is excited to find this out and tells you that he is also looking to connect with the local Black community and was wondering if you knew about any opportunities where he might be able to participate with community and collaborate on a health advocacy project.

Instantly you know the program because you registered to take part in this program in your second year! You share with him that this program is introduced in first year and they teach you about health advocacy. In second year, you have the option to take part in the community-engaged component where you get to work with a community-based organization on a collaborative project that has a health advocacy focus.

What is the name of the program? Who should Jamal contact? Can you locate at least one project partner that Jamal could complete his experience with from the list of community partners on the website?

Jamal thanks you for helping him learn more about the opportunities for community-engagement in medicine.



Discussion/Solutions

Who do you reach out to at CPGH to get more information?

Timi Idris, Program Manager for PLANS or Dr. Leah Jones, Academic Director

What kind of supports do they provide?

Sophia B. Jones Mentorship Program, Bursaries and scholarships, Information sessions, Community events/conferences 1:1 support/advocacy

What is the name of the program?

Community-Engaged Service Learning (CESL)

Who should the student contact?

Sarah Peddle, Program Manager for CESL

Can you locate at least one project partner that the student could complete their experience with from the list of community partners on the website?

Imhotep's Legacy Academy, Health Association of African Canadians



Case #2

Cas Reinhart (they/them) is a first-year med student and identifies as a white non-binary 35-year-old from Fredericton, New Brunswick. They completed their undergraduate degree at University of New Brunswick Saint John campus. They have been working with Nova Scotia Public Health for the past 4 years. Cas joined the Global Health Initiative (GHI) and has shown a keen interest in two-eyed seeing Indigenous Health and Planetary Health. They are looking to host a panel talk and need help determining panelists. The GHI have monthly meetings with staff from the Office of Community Partnerships and Global Health. Cas goes to the website and joins their newsletter email list.

Locate and join the CPGH mailing list.

At this meeting, Cas learns about an upcoming lecture that is open to students to attend and joins the Planetary Health Advisory Committee.

What is the name of the lecture? Who is presenting? When is it being held?



Case #2 - continued

Cas is excited to join the committee and plans to attend and promote the lecture to their peers. At the meeting, Cas asks the CPGH team if they can recommend any opportunities to connect with community members or organizations that do work in Indigenous health, specifically hoping for someone who can speak about two-eyed seeing. Faith Julien shares that the Wije'winen, the Mi'kmaw Native Friendship Centre, offers cultural trainings and suggested Cas reach out to them about their two-eyed seeing module and a potential panelist. Cas also mentions wanting to do an authentic and meaningful land acknowledgement at the start of the panel and asks Faith if there are any resources. Faith tells Cas about a section on their website that contains Indigenous resources.

Locate the Indigenous Resources section of the website. Find Dalhousie's Land Acknowledgement. Take a few minutes to reflect on the Land Acknowledgement and what it means to you.



Discussion/Solutions

Locate and join the CPGH mailing list.

<https://medicine.dal.ca/departments/core-units/global-health/news-events/bulletin.html> - Global Health Bi-Weekly E-Bulletin sign up – RH column

What is the name of the lecture?

Dr. Tarunendu Ghose Visiting Scholar in Global Health

Who is presenting?

Dr. Andrea MacNeill

When is it being held?

Monday, October 30th from 5:30-7:00pm ADT

Locate the Indigenous Resources section of the website.

<https://medicine.dal.ca/departments/core-units/global-health/indigenous-health/indigenous-resources.html>

Find Dalhousie's Land Acknowledgement:

"Dalhousie University is located in Mi'kma'ki, the ancestral and unceded territory of the Mi'kmaq. We are all Treaty people."

Take a few minutes to reflect on the Land Acknowledgement and what it means to you.

Dr. Brent Young explains it well: <https://youtu.be/YtggtbXVJC8>

A series of five concentric, curved yellow lines of varying lengths, starting from the bottom right and curving upwards and to the left, creating a sense of motion or a stylized 'C' shape.

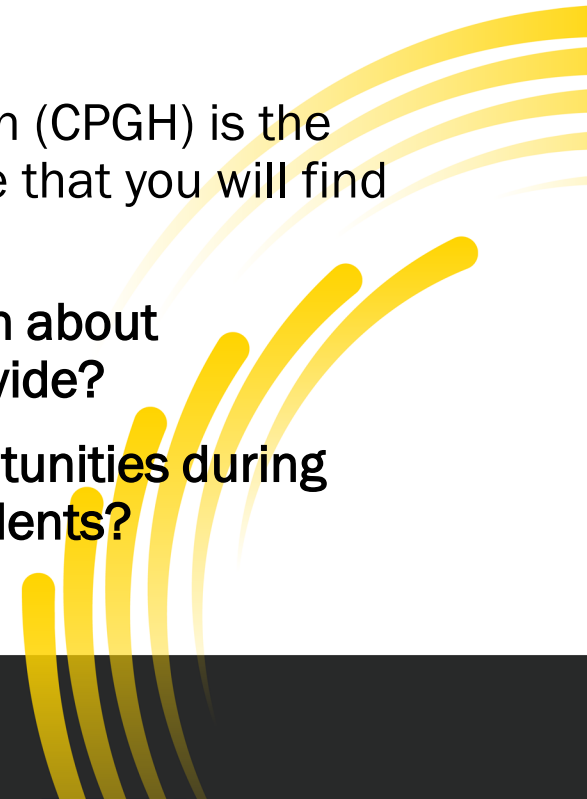
Case #3

Paulette Gagnon (she/her) is in her first year of studies at Dalhousie Medicine and identifies as a 29-year-old white trans woman from Sudbury, Ontario. Paulette is Francophone. She completed her undergraduate degree at Université Laval and her Master of Science Nutrition at the University of Ottawa. She heard that her Rural Week placement can take place in a clinical setting with French speakers. While chatting with Paulette in the DMSS student lounge, she tells you that she is interested in more collaborations with Francophone communities, and she also has a strong interest in infectious diseases and the burdens they place on global communities. She is curious about participating in international experiences.

You are pretty sure that the Office of Community Partnerships and Global Health (CPGH) is the best place to start. You have worked with the CPGH before, and you tell Paulette that you will find more information.

Who should Paulette connect with in the Office of CPGH to get more information about Francophone community collaboration? What kind of opportunities do they provide?

Who should Paulette reach out to learn more about international elective opportunities during medical school? What kind of international collaborations exist for medical students?



Discussion/Solutions

Who should the student reach out to at CPGH to get more information about Francophone community collaborations?

Jen LeBlanc, Program Manager for Francophone Health

What kind of francophone opportunities do they provide during rural week ?

Placements in Francophone communities

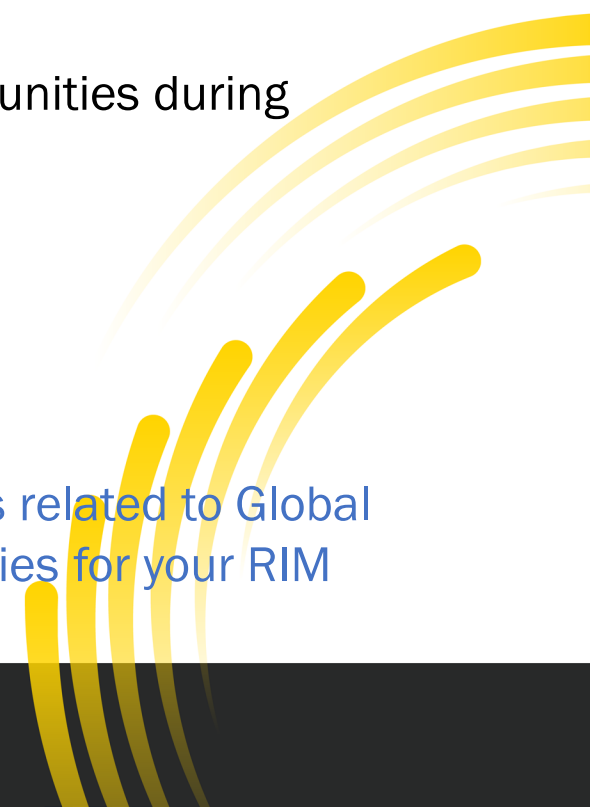
Who should the student reach out to learn more about international elective opportunities during medical school?

Elise Sammons, Program Manager for Global Health Education

What kind of international collaborations exist for medical students?

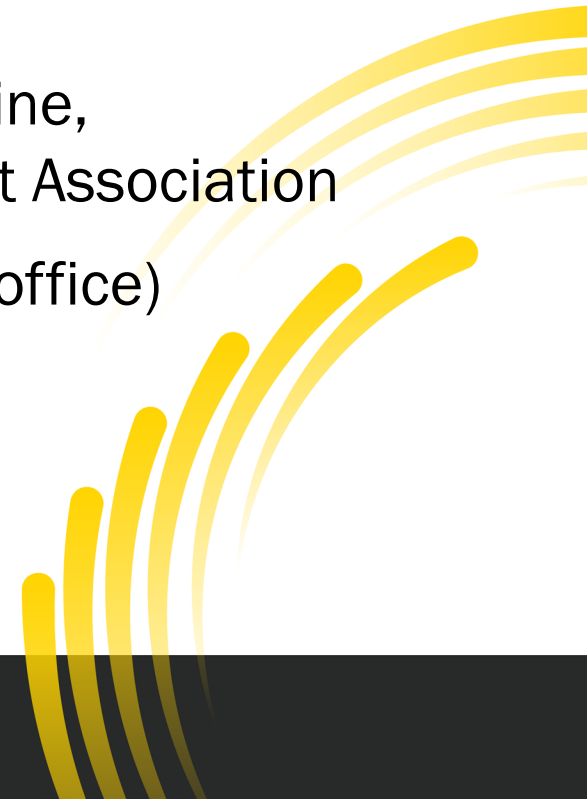
International Global Health Experiences for Medical Students and Residents

Research in Medicine: We can help facilitate research opportunities for students related to Global Health. Please contact ghep@dal.ca if you are looking for global health possibilities for your RIM project.



Wrap Up and Resources

- Newsletters – GHO, PLANS, KW
- Social Media – GHO, PLANS, KW
- Websites – medicine.dal.ca/global-health
- Student Groups – Global Health Interest Group, French in Medicine, Indigenous Medical Students Association, Black Medical Student Association
- CPGH Staff – come see us! CRC-241 (opposite end from Dean's office)



Stay in touch!

gho@dal.ca

medicine.dal.ca/global-health

CRC Room C241



DALHOUSIE
UNIVERSITY

FACULTY OF MEDICINE
Office of Community
Partnerships and Global Health