

SITE ANALYSIS & DESIGN PROGRAM for IONA PARK

Hopewell , Pictou County, NS

Nahal Sharifi | B00519030 | nahal.sharifi@dal.ca

Proposed Client: Friends of Iona Park
Instructor: Jill Grant
Technical Advisor: John Zuck

The main goal of the project was to

- help Friends of Iona Park by doing a site analysis and producing a design program for developing the site.

Main objectives that the study intended to achieve were

- identifying the limitations and capabilities of the site through a site analysis
- finding about the needs and interests of the community
- developing conceptual designs to test the program and indicate the fit between the program and the site

In order to develop a design program for the park, first, I synthesized the community input and the site analysis into a set of design criteria. The design criteria determined the principles that the final design and recommendations should meet. These criteria explained the proposed activities, area allocated for each activity, and the functional and spatial relationship among those activities. The program was expressed in terms of the quantity and quality of the spaces needed and performance statements.

A visual illustration of the program, in form of a conceptual design, was included to test how well the site can support the program.

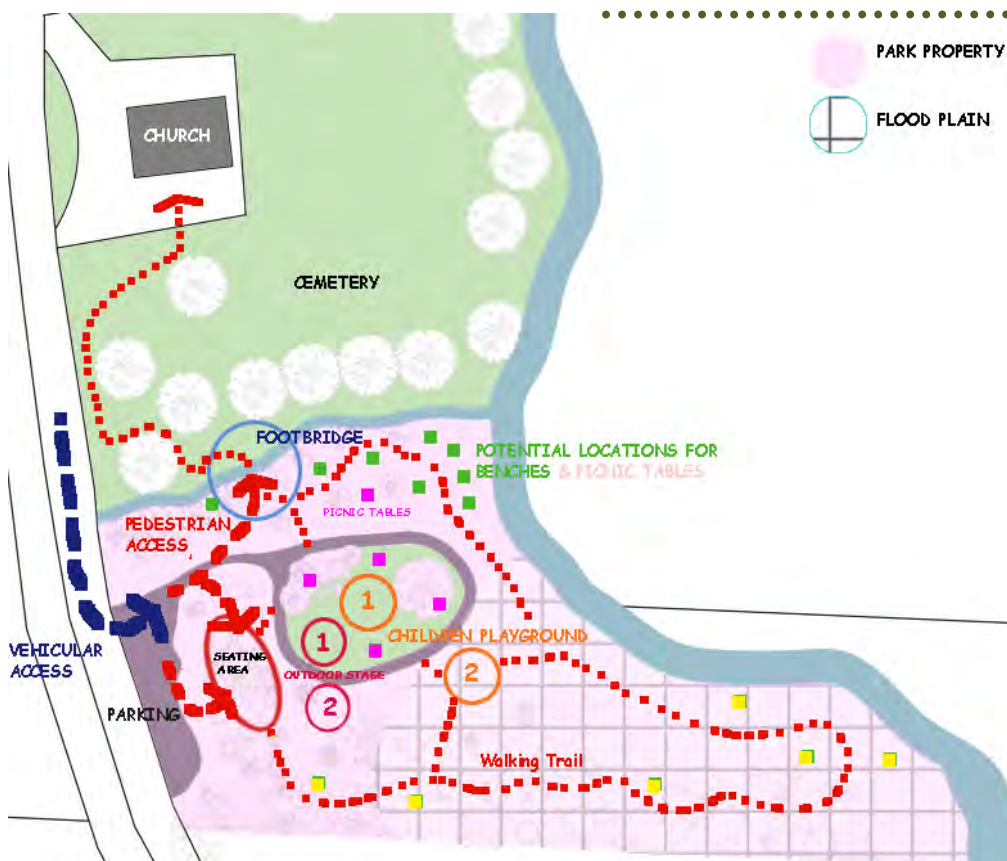


Figure 1: Conceptual Illustration of Potential Locations for the Program Uses

List of proposed features based on community priorities:

- Benches and picnic tables
- Walking trail
- Pedestrian access from the Church
- Outdoor stage with seating area
- Bridge over the brook
- Playground
- Fitness activity equipment

Community's aspirations for the park:

- Accessible
- Safe for children
- Welcoming
- Low maintenance
- Low cost