



BEDS Orientation 2024

BEDS Orientation web page

(Architecture > Current Students > How the School Works > BEDS Orientation)

- This page includes the BEDS orientation schedule and fall timetable.
- Read all documents carefully. Download them to your computer for reference.
- The following forms may be filled out and handed into the office, or downloaded from our web page and sent digitally: address form, questionnaire, citizenship form, NSAA membership application (online)
- DSU Health Plan: Sept 17 is the deadline to opt out. It covers Sept. 1–Aug. 31.



Atmosphere

- Be kind and help one another.
- Be positive, especially using online communication. Celebrate rather than negate.
- Your neighbours in studio will soon be your best friends. You will learn from everyone.



Work together



Respect (in the studio and also online)

- Creativity depends on being comfortable and being able to focus. Use headphones if you listen to music. Have noisy conversations where it won't bother anyone else.
- Dal has a "no scents is good sense" policy.
- Find out if anyone has allergies or sensitivities: nuts, citrus, etc.
- No dogs are allowed in the Architecture building.
- Respect the craft that went into the furniture. Don't draw, paint, glue, or cut directly on it.
- Keep your space tidy. Recycle all you can. Clean up after yourself.



Listen to music with headphones



Safety and Security in our Building

- The front and side doors are open Monday to Friday, 8:00 to 5:00.
- After hours, don't let anyone you don't recognize enter the building.
- Don't let a stranger enter the studio at any time.
- If you notice someone suspicious who doesn't belong here, notify the office or call Dal Security at 4109 or 902-494-6400, and/or download the security app.
- There are first aid kits in various locations, and an automatic defibrillator.
- If you have an accident, come to the office to fill out an Incident Report.
- Parking spaces for cars are not in abundance. You can't park on Dal property after 1:30 a.m. You are encouraged to walk, bike or use the bus around the city. You get a bus pass with your fees. It's up to you, but masks might be useful on the bus and anywhere else you feel uncomfortable. We have some in the office.





Your Belongings (in studio, but also your own property)

- This will feel like home, but don't leave valuables unattended.
- Write your name on your sketchbook, your flash drives, and your drawings.
- If you find something without a name, place it on the Lost and Found shelf in the Resource Centre or hand it in to the office.
- Photograph or scan your drawings and models soon after they're done.
- Library books: If you are finished with them, return them so others can borrow them.

Involvement

- Take part in DASA. It's here for your benefit. It gives you a voice on committees, including student admissions and faculty appointments.
- There are many opportunities for extracurricular activities. Current initiatives involve equality, fairness, inclusiveness, climate change and justice, housing, etc. Be involved. The more you take part, the more this becomes your school. Then we all become better at what we do.
- Be sure to fill out the instructor evaluations (SLEQs) at the end of the term. They tell the instructor, the Director, and the Dean what's working well and what isn't. Be constructive.



Building Repairs and Renovations

- If you notice that repairs are needed to furniture or part of the building, or the heat or cold is too much, or there are critter friends wandering around, contact Susanna in the office: arch.office@dal.ca. I'll put in a work order.
- Renovations are ongoing. Be adaptable. Something is always being improved here. That's a good thing!
- Please report any insufficiencies that get in the way of completing your work.



Recycling and Waste

- Dal is a leader in diverting waste from the landfill.
- Place reusable materials in the material depot in the East Studio.
- There are separate bins for paper, organics, recyclables, and garbage.
- There are containers in the studio and the Resource Centre for fluorescent bulbs, things that contain mercury, paint, batteries, broken glass, knife blades, printer cartridges, and electronics.



Balance and Health

- Maintain a balance between school and home life. Make clear lines.
- You will experience pressure to work long hours, but the School has guidelines on how many hours a week to spend on each course. Follow them.
- If an assignment seems to expect too much, double-check with the instructor before proceeding.
- You can't be creative or productive if you're tired or hungry.
- It's dangerous to use a knife or other tools when you're not alert.



Avoid this ...



and this ...



COVID and Flu Safety

- All students are strongly encouraged to get fully vaccinated. Check the Dal website on COVID info and flu shot updates.
- You are no longer required to wear a mask, but if you want to, we will have some in the office.
- Wash your hands frequently. Disinfect pertinent areas.
- If you are sick, stay home.
- Go outside to exercise.
- Sleep



Communication

- We communicate primarily through your Dal email.
- We may post notices on the bulletin boards halfway up the centre stairs.
- We enter your email on a listserv to provide you with external messages.
- We have social media pages.
- General info is on the School website.
- Mailboxes are provided in the Resource Centre. Please check for returned papers, outside mail, etc.
- You may arrange for packages to be sent to the School office. We will let you know when they come in. It makes sense, as we are in the office all day.



The Office

- Visit us often and email us. The office staff are here to help you navigate the university. If we can't help, we can point you in the right direction. Don't ignore fee payments. Explain your situation, as this makes Dal more forgiving.
- Read your Dalhousie email. Check your mailbox regularly (in the Resource Centre), and check for announcements on the bulletin board and on Brightspace.
- If you are sick, let us know. Twice a term for each course, you can submit a "student declaration of absence" that covers up to three days. For a longer period, you'll need a medical note.
- If you need an academic accommodation, visit the Student Accessibility Centre before the start of each term.
- Hugs, listening ears, and advice on where to go for help are all free. Just ask. So is candy (and apples in the fall).



B1 Classes

Fall 2024 Timetable

School of Architecture - Dalhousie University

29 Aug. 2024

	Monday				Tuesday		Wednesday			Thursday				Friday			
	Non-degree	B1	M2	M5	B1	M2	Non-degree	M2	M5	Non-degree	B1	M2	M5	Non-degree	B1	M2	M5
9:00																	
10:00																	
11:00	ARCH 2501 Macdon. D501 CP																
12:00		ARCH 3106 B015 CM															
1:00																	
2:00																	
3:00																	
4:00																	
5:00																	
6:00																	

Non-degree courses

ARCH 1001.03 INTRODUCTION TO ARCH. 1 (EJ)
 ARCH 1201.03 SCIENCE OF BUILT ENVIRONMENT 1 (DP)
 ARCH 2501.03 DESIGN COMMUNICATION 1 (CP)

BEDS - B1 (64 students)

ARCH 3001.06 DESIGN (CVer*, SL, HN, JO, WP)
 ARCH 3106.03 ANCIENT SETTLEMENTS, BLDG, LAND, (CM)
 ARCH 3207.03 BUILDING TECHNOLOGY (EJ)
 ARCH 3301.01 PROF. PRACTICE (SF) (Oct.15-Dec.3)
 ARCH 3501.03 REPRESENTATION (DD)

BEDS - B4 (52 students)

ARCH 8892.03 PROF. PRACTICE: WORK TERM (BN)

MArch - M2 Design (41 students)

ARCH 5002.06 URBAN HOUSING STUDIO (NS) + 5102
 ARCH 5004.06 URBAN SYSTEMS STUDIO (CV) + 5117
 ARCH 5013.06 DESIGN-BUILD STUDIO (JF) + 6209

MArch - M2 exchange to Lisbon (3 students)

MArch - M2 exchange to Glasgow (2 students)

MArch - M2 Hum./Tech. core courses; M5 electives

ARCH 5102.03 HOUSING THEORY (NS) + 5002
 ARCH 5114.03 CONSERVATION PRACTICE (RMilito)
 ARCH 5117.03 BUILT & NATURAL ENVIRON. (CV) + 5004
 ARCH 5199.03 HUMANITIES SEM.: MATERIAL WORLDS (MF)
 ARCH 5215.03 FABRICATION (ES)
 ARCH 5220.03 ADAPTIVE REUSE (AP)
 ARCH 5299.03 TECH. SEMINAR: MATERIALS, CLIMATE (BL)

MArch - M2/M5 electives

ARCH 6209.03 MATERIAL INVESTIGATION (JF) + 5013
 ARCH 6212.03 TECH. SEMINAR: ENERGY MODELING (CP)
 ARCH 6513.03 REPRESENT. SEMINAR.: INSTALLATION (JM)

MArch - M4 Work Term Contin. (2 students)

ARCH 5310.00 WORK TERM CONTINUATION (ET)

MArch - M5 (53 students)

ARCH 9014.09 M.ARCH. THESIS 1 (MF*, SB, SF, NS, CV)

MArch - M6 (5 students)

ARCH 9009.00 M.ARCH THESIS CONTINUATION (MF)

Faculty teaching

Michael Faciejew (MF)
 Susan Fitzgerald (SF)
 James Forren (JF)
 Emanuel Jannasch (EJ)
 Brian Lilley (BL)
 Christine Macy (CM)
 Austin Parsons (AP)
 Niall Savage (NS)
 Catherine Venart (CV)
 Cristina Verissimo (CVer)

Faculty not teaching

Diogo Burnay Roger Mullin
 Émilie Desrochers-Turgeon
 Michael Putman T. Sweetapple

Part-time Academics

Sarah Bonnemaison (SB)
 Daniel Dickson (DD)
 Sara L'Espérance (SL)
 Jonathan Mandeville (JM)
 Rosa Miiito (RMilito)
 Hannah Newton (HN)
 Benjie Nycum (BN)
 Jude Obersi (JO)
 Will Perkins (WP)
 Doug Pitcairn (DP)
 Cailen Pybus (CP)
 Eric Stotts (ES)
 Emily Thorpe (ET)

Legend:

Required / core
Elective
Meeting
 *coordinator

Room numbers

2107 (HD4)
 2135 (HD2D)
 2135a (HD2E)
 2135b (HD2F)
 1202 (HB4)
 1208 (HB2)
 1210 (HB1)
 B015 (HA19)
 B102 (HA18)

Faculty on leave

Ted Cavanagh
 Brian Lilley
 Steve Parcell

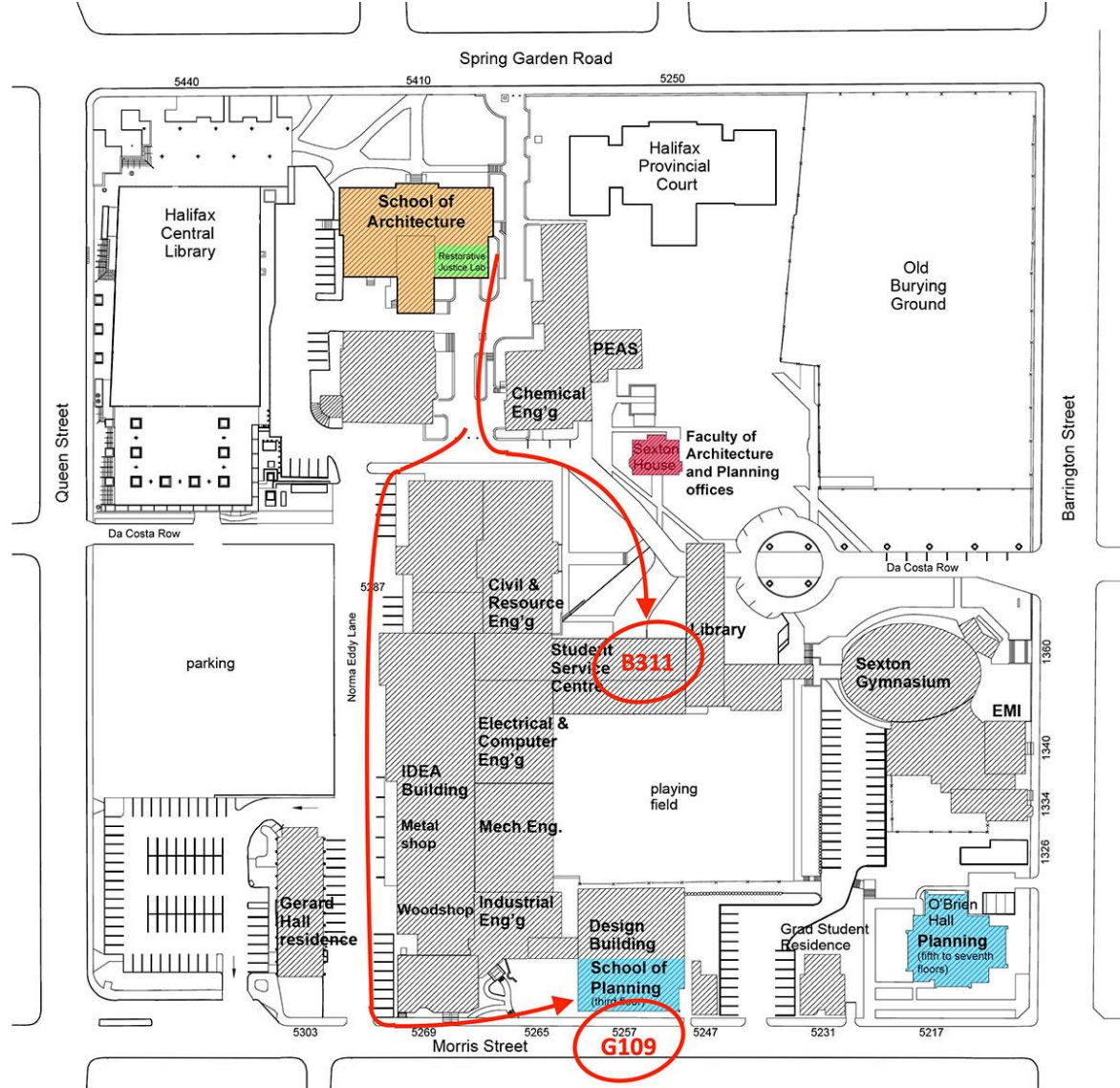
Administration

Dean: Graham Gagnon
 Director: James Forren

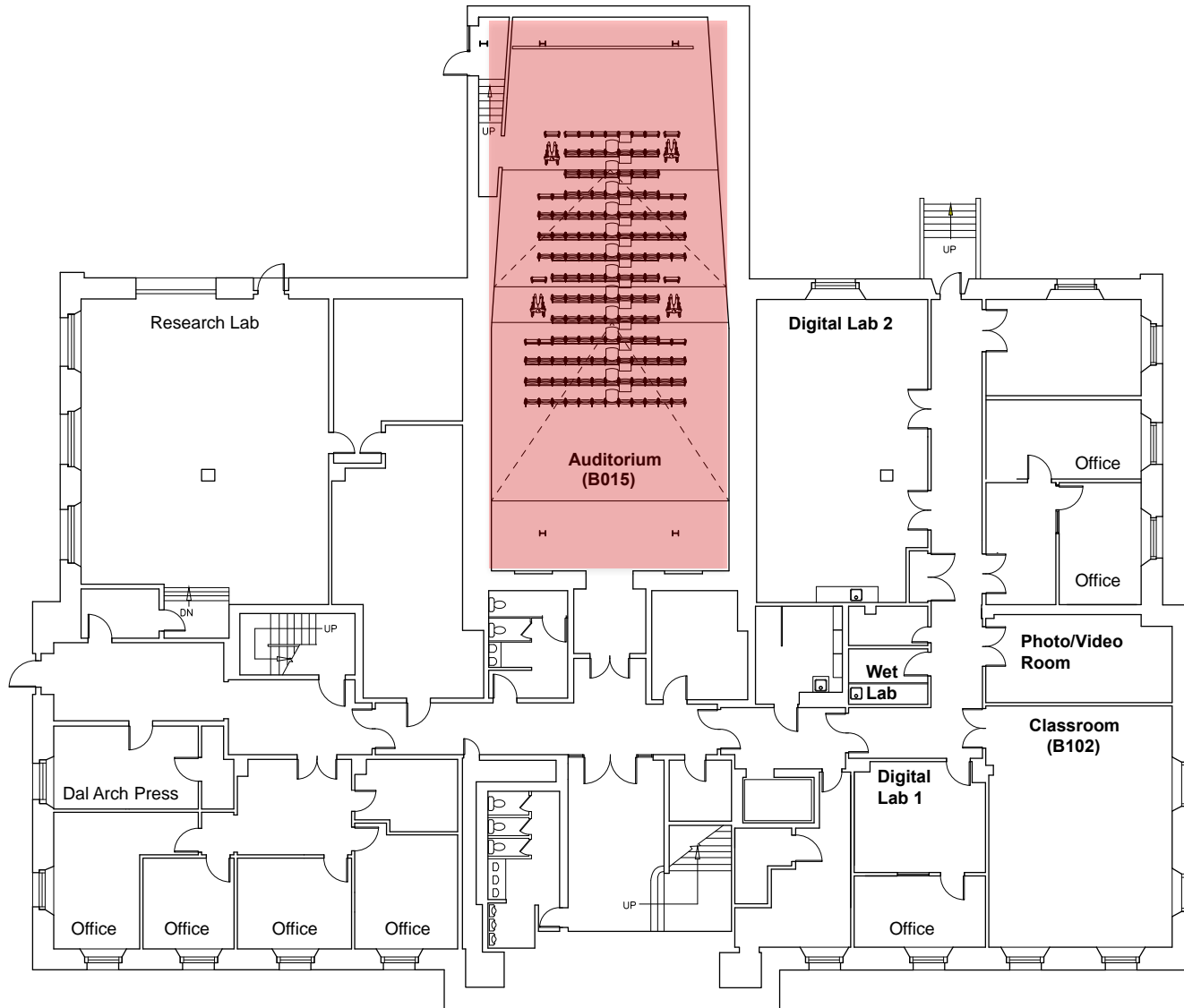
Academic dates

Tuesday, Sept. 3, 2024 Non-degree classes begin
 Wed., Sept. 4 - Fri., Sept. 6 M5 Thesis research week
 Thur., Sept. 5 - Fri., Sept. 6 B1 orientation
 Monday, Sept. 9 BEDS/MArch classes begin
 Monday, Sept. 30 Truth and Reconciliation Day
 Tuesday, Oct. 22, 9:00 am Architecture convocation
 Monday, Oct. 14 Thanksgiving holiday
 Monday, Nov. 11 Remembrance Day holiday
 Nov. 11-15 Study break - no classes
 Wed., Dec. 4 Non-degree classes end
 Friday, Dec. 6 BEDS/MArch classes end
 week of Dec. 9-13 BEDS/MArch reviews
 Friday, Dec. 13 BEDS/MArch fall term ends
 Monday, Jan. 6, 2025 Winter term begins

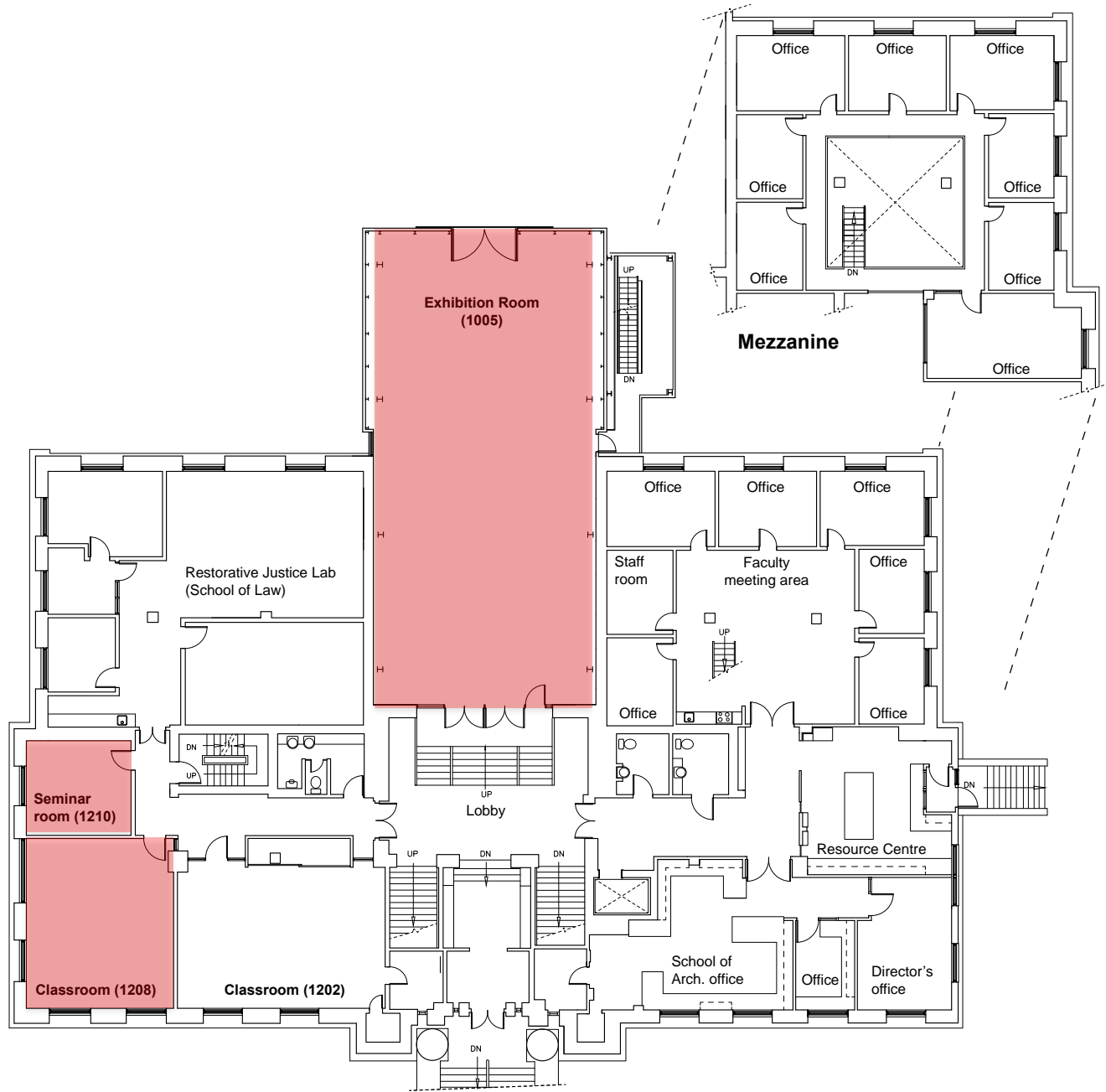
Classes in Other Buildings



Classes in Architecture Building

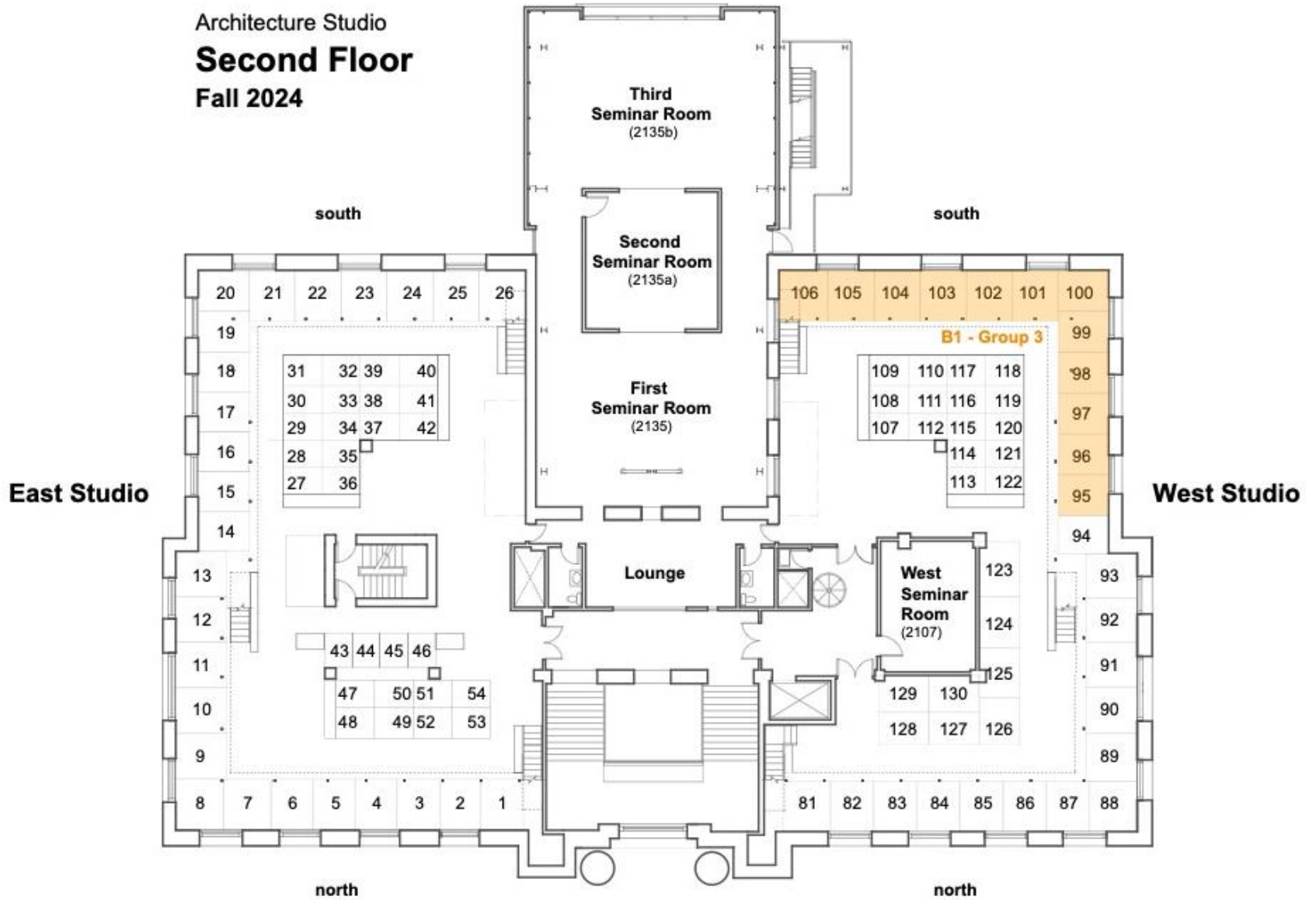


Basement

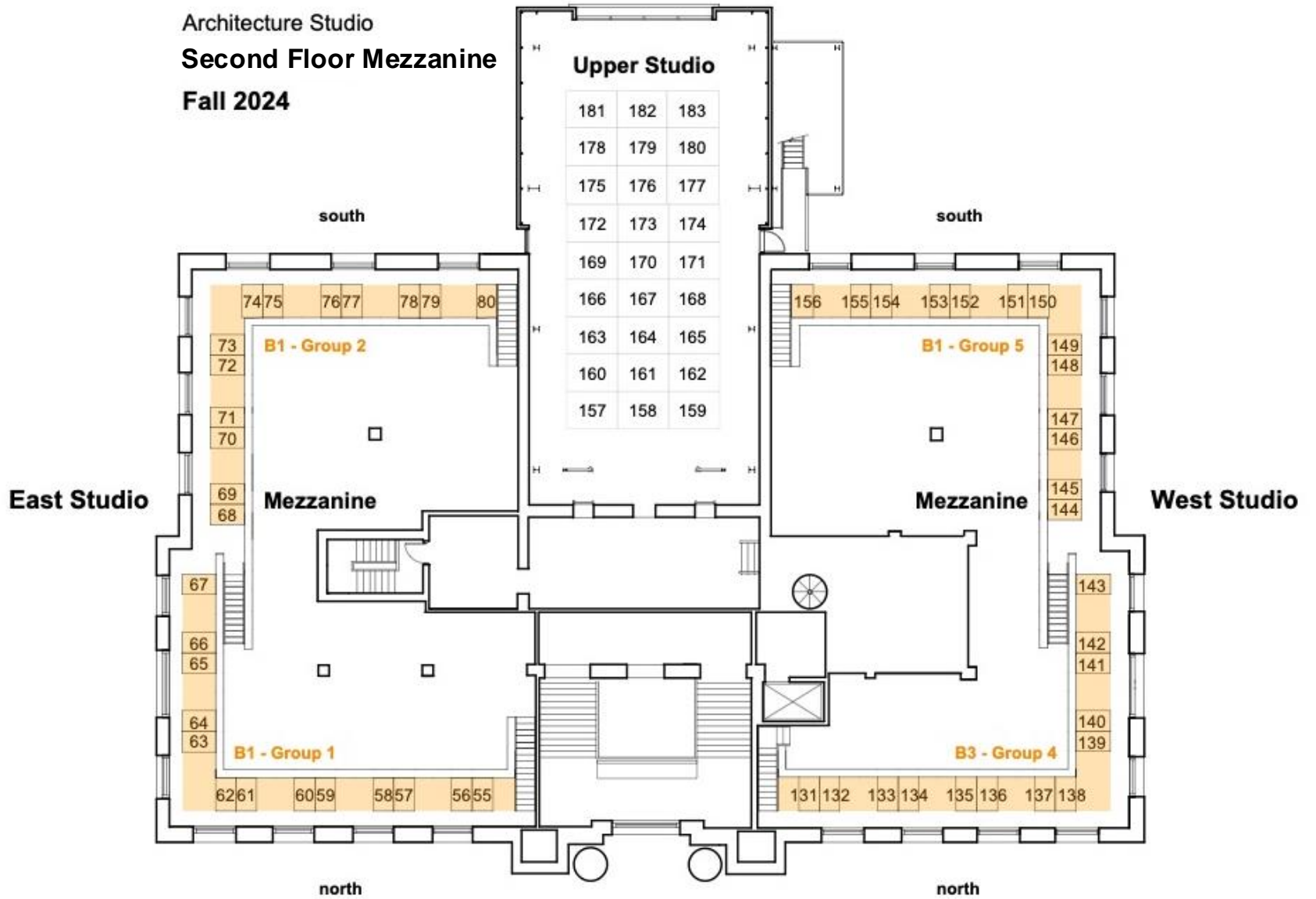


First Floor

Architecture Studio
Second Floor
Fall 2024



Architecture Studio
Second Floor Mezzanine
Fall 2024



B1 Design Groups

	Group 1	Group 2	Group 3	Group 4	Group 5
	East Studio, north mezzanine	East Studio, south mezzanine	West Studio, under south mezzanine	West Studio, north mezzanine	West Studio, south mezzanine
Weeks 1–6	Cristina Verissimo	Hannah Newton	Will Perkins	Jude Obersi	Sara L'Espérance
Weeks 7–13	Hannah Newton	Will Perkins	Jude Obersi	Sara L'Espérance	Cristina Verissimo
	Emanuel Atie	Danielle Cassivi	Ashley Boone	Jessie Abbey	Maria Agombar
	Deanna Fraser	Jennifer Harris	Max Brown	Jillian Berry	Saad Alsaeed
	Blake Garston	Sophie Jones	Madelyn Case	Liam Brown	Andrew Delicaet
	Isaac Geyer	Lisa McCombe	Karissa Cumming	Anna Kobelev	Mariah Hildebrand
	Natalie Hill	John McPartland	Justin Davey	Maya Lambert	Parmeeda Jafari
	Hafsa Khan	Malak Mohamed	Caroline Lebel	Kate MacKenzie	Jakob Learned Lavoie
	Heather Mauchan	Richard Ng'ethe	Abby LeBlanc	Camryn Murphy	Daniela Maclean
	Hussnain Mohammad	Liam O'Brien	Felix Leblanc-Pratt	Caelyn Parker	Jeremy Matulin
	Kiana Mozaffari	Frederick Ovah	Oliver Mitson	Adam Salami	Carrie Milks
	Tayler Roberts	Rebecca Singleton	Ève Piché	Ameek Singh	Ronnie Philip
	Elise Roussel	Gina Tuck	Reesa Pudjo	Risa Takahashi	Frank Soloman
	Julia Sheehan	Madison Willoughby	Catherine Simard	Jesse van Hattem	Presley Warren-Daigle
	Hannah Zilke			Sophie Weller	Vayda Wells-McCaughen

B1 Studio Spaces

East Studio

Under the Mezzanine

1 (M2) NS: John Lau
2 (M2) NS: James Smith
3 (M2) NS: Jessica Mendoza
4 (M2) NS: Sara Ragab
5 (M2) NS: Keegan Gray
6 (M2) NS: Anna Garrido
7 (M5) Patrick Stewart-Jones
8 (M5) Mya Staubitzer
9 (M5) Erin Gaffney
10 (M5) Molly Donahue
11 (M5) Brittany Dwyer
12 (M5) Liam Macintosh
13 (M5) Simin Rasooli
14 (M5)
15 (M5) Elias Roubos
16 (M5) Natasha Jukes
17 (M5) Jack Ziemanski
18 (M5) Hannah Wallace-Lund
19 (M5) Dontae Dipanfilo
20 (M5) Kaylee Peters
21 (M5) Purvangi Patel
22 (M5) Erika Kirkland
23 (M5) Maram Shaheen
24 (M5) Cam Palfreyman
25 (spare)
26 (spare)

South Floor

27 (M2) CV: Jessica Kohlhase Timotheo
28 (M2) CV: Harris Georgakopoulos Tolis
29 (M2) CV: Rafa Aqlan
30 (M2) CV: Keegan Warren
31 (M2) CV: Holly Wiersma
32 (M2) CV: Mary Caplice
33 (M2) CV: (spare)
34 (M2) CV: Katie Berwick
35 (M2) CV: (spare)
36 (M2) CV: Katherine MacLeod
37 (M2) CV: Aya Elgendi
38 (M2) CV: (spare)
39 (M2) CV: Camila Lima
40 (M2) CV: Zamani Millar
41 (M2) CV: Shane Bannister
42 (M2) CV: Jamie Spidell

North Floor

43 (M2) NS: (spare)
44 (M2) NS: Sophie Fitzgerald
45 (M2) NS: Nicholas Johnson
46 (M2) NS: (spare)
47 (M2) NS: Brian Tham
48 (M2) NS: Vanessa Croft
49 (M2) NS: Jean Jacobson
50 (M2) NS: (spare)
51 (M2) NS: (spare)
52 (M2) NS: Madden Richard
53 (M2) NS: Austin Jones
54 (M2) NS: Shavna Konashuk

On the Mezzanine

55 (B1) Group 1: Elise Roussel
56 (B1) Group 1: Julia Sheehan
57 (B1) Group 1: Emanuel Atie
58 (B1) Group 1: Heather Mauchan
59 (B1) Group 1: Deanna Fraser
60 (B1) Group 1: Natalie Hill
61 (B1) Group 1: Isaac Geyer
62 (B1) Group 1: Blake Garston
63 (B1) Group 1: Hafsa Khan
64 (B1) Group 1: Tayler Roberts
65 (B1) Group 1: Hussnain Mohammad
66 (B1) Group 1: Kiana Mozaffari
67 (B1) Group 1: Hannah Zilke
68 (B1) Group 2: Danielle Cassivi
69 (B1) Group 2: Gina Tuck
70 (B1) Group 2: Liam O'Brien
71 (B1) Group 2: Richard Ng'ethe
72 (B1) Group 2: Sophie Jones
73 (B1) Group 2: Jennifer Harris
74 (B1) Group 2: Lisa McCombe
75 (B1) Group 2: Madison Willoughby
76 (B1) Group 2: John McPartland
77 (B1) Group 2: Frederick Ovah
78 (B1) Group 2: Rebecca Singleton
79 (B1) Group 2: Malak Mohamed
80 (B1) Treasure Soladoye

West Studio

Under the Mezzanine

81 (M5) Myrk Ørvsson
82 (M5) Bailey Kinnear
83 (M5) Anika Almero
84 (M5) Tony Rukongwa
85 (M5) Sam Beckley
86 (M5) Sam Foster
87 (M5) Colby Rice
88 (M5) Lizzie Krnjevic
89 (M5) Eliza Druart
90 (M5) Lucy Ferraro
91 (M5) Chris Suh
92 (spare)
93 (spare)
94 (spare)
95 (B1) Group 3: Ashley Boone
96 (B1) Group 3: Madelyn Case
97 (B1) Group 3: Max Brown
98 (B1) Group 3: Oliver Mitson
99 (B1) Group 3: Caroline Lebel
100 (B1) Group 3: Karissa Cumming
101 (B1) Group 3: Justin Davey
102 (B1) Group 3: Felix LeBlanc-Pratt
103 (B1) Group 3: Ève Piché
104 (B1) Group 3: Catherine Simard
105 (B1) Group 3: Abby LeBlanc
106 (B1) Group 3: Reesa Pudjo

South Floor

107 (M2) JF: Jordan Gallant
108 (M2) JF: Shazia Ranmal
109 (M2) JF: Maya Kerfoot
110 (M2) JF: Matthew Hovey
111 (M2) JF: (spare)
112 (M2) JF: Cole Fraser
113 (M2) JF: Jacob Rusen-Steele
114 (M2) JF: Davis Skippon
115 (M2) JF: (spare)
116 (M2) JF: Laura Pollard
117 (M2) JF: Molly Rainnie
118 (M2) JF: Ben Ernst
119 (M2) JF: Nick Leech
120 (M2) JF: Aidan Cassie
121 (M2) JF: Melanie Roberts
122 (M2) JF: Sarah Shannon

North Floor

123 (furniture storage)
124 (furniture storage)
125 (furniture storage)
126 (spare)
127 (spare)
128 (spare)
129 (spare)
130 (spare)

On the Mezzanine

131 (B1) Group 4: Jessie Abbey
132 (B1) Group 4: Jillian Berry
133 (B1) Group 4: Camryn Murphy
134 (B1) Group 4: Jesse van Hattem
135 (B1) Group 4: Liam Brown
136 (B1) Group 4: Caelyn Parker
137 (B1) Group 4: Maya Lambert
138 (B1) Group 4: Kate MacKenzie
139 (B1) Group 4: Ameet Singh
140 (B1) Group 4: Adam Salami
141 (B1) Group 4: Sophie Weller
142 (B1) Group 4: Risa Takahashi
143 (B1) Group 4: Anna Kobelev
144 (B1) Group 5: Vayda Wells-McCaughen
145 (B1) Group 5: Carrie Milks
146 (B1) Group 5: Saad Alsaeed
147 (B1) Group 5: Jakob Learned Lavoie
148 (B1) Group 5: Daniela Maclean
149 (B1) Group 5: Presley Warren-Daigle
150 (B1) Group 5: Andrew Delicaet
151 (B1) Group 5: Ronnie Philip
152 (B1) Group 5: Jeremy Matulin
153 (B1) Group 5: Frank Solomon
154 (B1) Group 5: Mariah Hildebrand
155 (B1) Group 5: Parmeeda Jafari
156 (B1) Group 5: Maria Agombar

Upper Studio

157 (M5) Aaron Cull
158 (M5) Emma Gagnon
159 (M5) Gabriel Malo
160 (M5) Jonah Kurylowich
161 (M5) Jackson Senner
162 (M5) Janson Chan
163 (M5) Lilly Langford
164 (M5) Matthew Beck
165 (M5) Claire Wilson
166 (M5) Sam Arsenault
167 (M5) Jam Basilio
168 (M5) Rodrigo Guerreiro
169 (M5) Will Tillmann
170 (M5) Austin Haw
171 (M5) Kaden Rideout
172 (M5) Luke Norton
173 (M5) Lucas Bondar
174 (M5) Duncan Armour
175 (M5) Michael Golovenko
176 (M5) Meghan Chadwick
177 (M5) Ryan Wyrostok
178 (M5) Ben Johnston
179 (M5) Cody Gaulton
180 (M5) Camylle Arsenault
181 (M5) Nicholas Stefanakis
182 (M5) Liam Farrar
183 (M5) James Barrett

Studio Regulations

Furniture

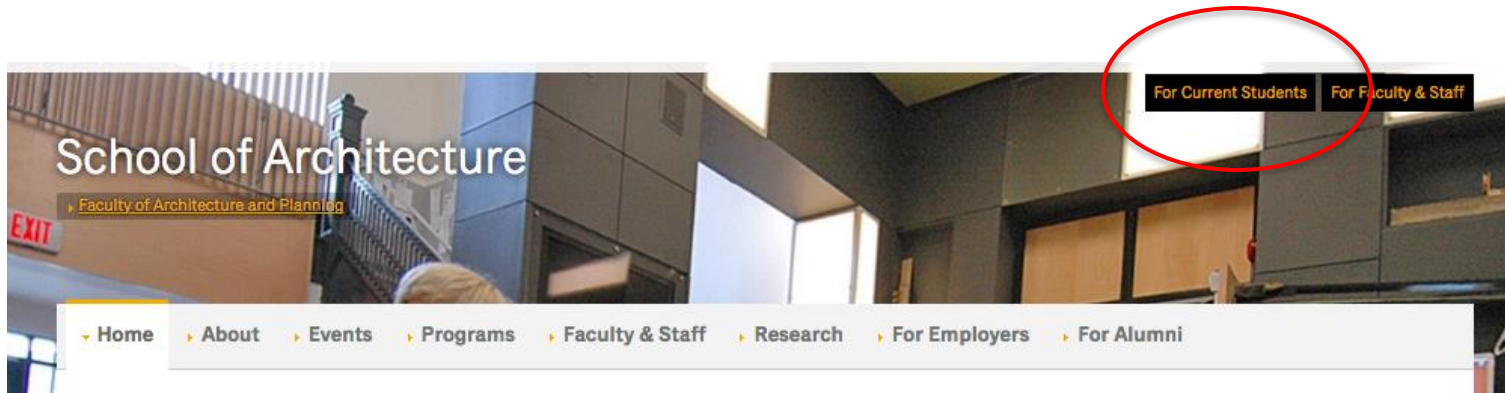
Everyone is entitled to one table, one locker (built-in or portable), and one chair.

Studio Regulations

- **Follow the fire regulations. Keep all fire doors closed.**
- **Emergency? Refer to the "What to do in case of emergency" poster.**
- **If you want to talk on your phone, have a loud conversation, or participate in an online meeting, please leave the studio to avoid disturbing others.**
- **If you listen to music, use headphones to avoid disturbing others.**
- If the supplies in the first aid cabinet are low, notify Susanna: arch.office@dal.ca.
- Don't use tape to attach borco to a drawing board; removing the gummy residue requires labour and solvents. Parallel rule hardware is sufficient to hold it down.
- Plaster, cement, and concrete must be mixed only in the Wet Lab downstairs or in the Engineering Lab.
- Move unwanted (but still usable) materials to the material depot in the East Studio.
- Power tools must not be used in the studio.
- Keep any food items in a sealed container to discourage furry predators.
- Alcohol is not permitted in the building, except at special events with a liquor permit.
- Bicycles must be left outside the building.
- To reserve the West Seminar Room (2107) during daytime hours, add your name to the signup list next to the door.
- All of the seminar rooms are classrooms, so don't leave anything there.
- If you use a seminar room after hours, clean it up before you leave.
- If a studio computer or printer isn't working, notify Ken: ken.kam@dal.ca.
- If anything else in the studio needs repair, notify Susanna: arch.office@dal.ca.
- At the end of the term, please empty and clean up your desk, locker, and studio space so that they are ready for the next student to move in.
- Beware of visiting thieves! Don't leave computers or valuables unattended.

Border or furniture disputes? See your DASA reps.

Website for Current Students



Website for Current Students

How the School Works

- • Academic Dates
- • Academic Regulations
- • BEDS - Orientation
- • BEDS - Years 3 & 4
- • Communicating
- • Community of Scholars
- Computer Specifications
- Co-op Work Terms
- • Course Outlines
- Design Software
- Exchange Programs
- Extramural Electives
- Grades & Appeals
- Graduate Studies
- Instructor Responsibilities
- M.Arch - Year 5
- M.Arch - Year 6
- Registration
- Remote Communication
- Scholarships and Bursaries
- • School Procedures
- • Studio
- • Work Safety
- • Writing
- Year-end Reviews
- Year 3 Reviews
- Year 4 Reviews

Website for Current Students

What's Inside the Building

- **Booking a Classroom**
- • Building Access for Students
- • Computer Labs
- • Design Software Tutorials
- Digital Photography and Studio
- Digital Printing
- Digital Settings
- Exhibition Room
- Digital Lab
- Image Collections and GIS
- Photocopying
- Resource Centre
- • Wood Shop
- Work Safety

What's Outside the Building

- **Architecture Bookstores**
- Architecture Schools
- Awards
- Competitions
- • Dalhousie Links
- Lectures
- Libraries
- • Local Suppliers
- Organizations and Associations
- • Sexton Library

Representation

DASA

Website for Current Students

➔ Representation



Saul Steinberg, "The Line" (1959)

Techniques

Observing

- Measuring
- Line
- Tone
- Colour

Drawing

- Drawing Materials

Subjects

Building

- Geometry
- Massing
- Formal Elements
- Spatial Organization
- Material
- Structure
- Construction

Website for Current Students



DASA Representatives on Academic Committees (Fall 2024)				
Committee	Number	Level	Rep	Chair
Faculty of Architecture and Planning	2	BEDS or MArch	TBA	Michael Putman
			TBA	
Faculty of Architecture and Planning - EDI Committee		BEDS or MArch	TBA	Roger Mullin
			TBA	
			TBA	
School of Architecture	2	BEDS	TBA	TBA
			TBA	
	2	MArch	TBA	
			TBA	
Program Committee and MArch Admissions	1	MArch	TBA	James Forren, Susan Fitzgerald
Design Group	1	BEDS or MArch	TBA	Niall Savage
Humanities Group	1	BEDS or MArch	TBA	Christine Macy
Technology Group	1	BEDS or MArch	TBA	Roger Mullin
Professional Practice Group	1	BEDS or MArch	TBA	Michael Putman

Student Assistants – Fall 2024

Courses

B1 History

Katie Berwick (M2)

Harris Georgakopoulos Tolis (M2)

Maya Kerfoot (M2)

Shayna Konashuk (M2)

B1 Technology

Jackson Senner (M5)

Claire Wilson (M5)

B1 Representation

Janson Chan (M5)

Gabriel Malo (M5)

Nicholas Stefanakis (M5)

Chris Suh (M5)

Labs

Computer Help Desk

Kaylee Peters (M5)

Digital Lab

John Lau (M2)

Camila Lima (M2)

Wet Lab

Aya Elgendi (M2)



ORIENTATION EVENTS

For New Dalhousie Architecture Students

Thursday, September 5, 2024

Everyone	9:30–10:50	Auditorium (B015) 5410 Spring Garden	Intro to School of Architecture (James Forren) Student experience (Susanna Morash-Kent) Dalhousie Architecture Students Association (Vanessa Croft) Classes, studio, and website (Steve Parcell)
Everyone	11:00–11:50	Exhibition Room	B1 term: studio culture, portfolio, schedule, reviews (Cristina Verissimo)
Everyone	12:00–1:00	Exhibition Room	Lunch is provided B1 student photos (Ken Kam) Building keys (Susanna Morash-Kent)
Everyone	1:00–1:50	Auditorium (B015)	Studio life and life outside school (two DASA reps)
Groups A–H	2:00–3:30	meet in the lobby	Tour of the building and the campus (8 DASA reps)

Friday, September 6, 2024

Everyone	2:00–2:30	Auditorium (B015)	Introduction to Sexton Library (Allison Fulford)
Everyone	2:30–3:00	Auditorium (B015)	Intro to scavenger hunt (DASA)
Everyone	3:00–5:00	Halifax	Scavenger hunt (DASA)
Everyone	5:00–6:30	Exhibition Room	Reception for BEDS, BCD, and MPlan students (DASA, SUP, GPS)



ORIENTATION GROUPS

for Building/Campus Tours on Thursday at 2:00 pm

The same groups will assemble for B1 lab tutorials later in the term.

Group A	Group B	Group C	Group D
Emanuel Atie	Jessie Abbey	Maria Agombar	Madelyn Case
Deanna Fraser	Blake Garston	Saad Alsaeed	Justin Davey
Maya Lambert	Natalie Hill	Ashley Boone	Andrew Delicaet
Lisa McCombe	Kate MacKenzie	Max Brown	Mariah Hildebrand
Frederick Ovah	Carrie Milks	Isaac Geyer	Felix Leblanc-Pratt
Reesa Pudjo	Malak Mohamed	Hafsa Khan	Caelyn Parker
Ameek Singh	Catherine Simard	Camryn Murphy	Taylor Roberts
Vayda Wells-McCaughen	Jesse van Hattem	Rebecca Singleton	Gina Tuck
Group E	Group F	Group G	Group H
Karissa Cumming	Danielle Cassivi	Jillian Berry	Sophie Jones
Parmeeda Jafari	Caroline Lebel	Liam Brown	Anna Kobelev
Jakob Learned Lavoie	Daniela Maclean	Jennifer Harris	Liam O'Brien
Oliver Mitson	Jeremy Matulin	Abby LeBlanc	Ève Piché
Hussnain Mohammad	Heather Mauchan	Kiana Mozaffari	Adam Salami
Elise Roussel	John McPartland	Richard Ng'ethe	Treasure Soladoye
Risa Takahashi	Julia Sheehan	Ronnie Philip	Presley Warren-Daigle
Madison Willoughby	Sophie Weller	Frank Soloman	Hannah Zilke