

RYAN VANDERVLIT

Ryan.Vandervliet@dal.ca

Content

ANKOR House	4-7
CUBIT Model	8-9
SWITCH Pavillion	10-13
Nordic Pavillion Case Study	14-15
Recipricating Structure Model	16-17
Interpretive Mapping	18-19





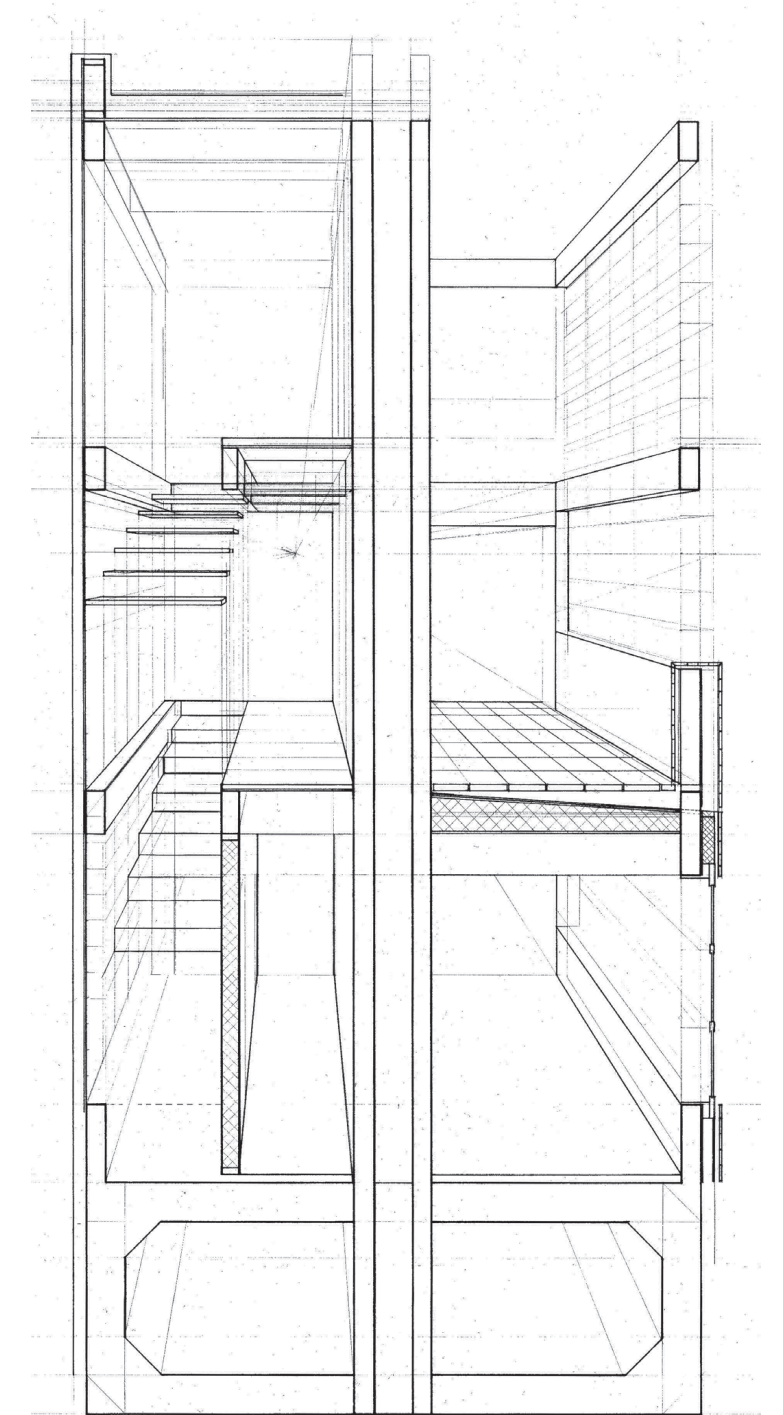
**ANKOR HOUSE**  
Lunenburg, Nova Scotia

B2 Design Studio  
Tutor: Jennifer Esposito  
Winter 2017

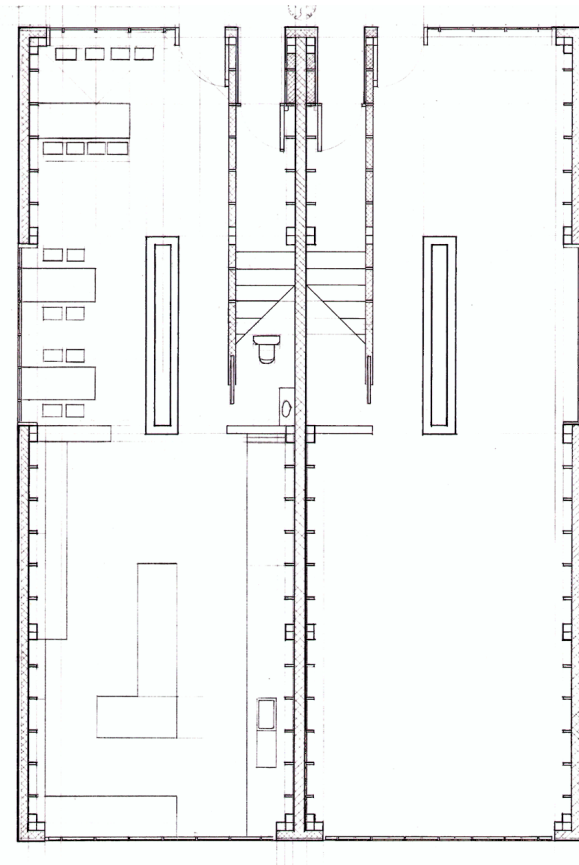
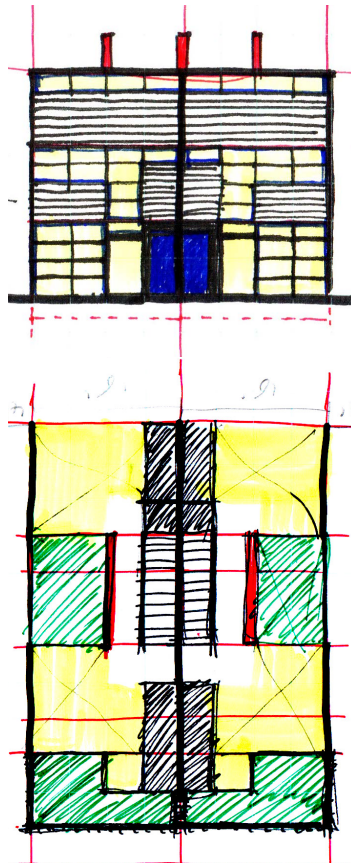
Bringing together the public and private. Two opposing worlds that come together within inches, yet are worlds apart.

A place of silence. A place of dreaming. A place to feel the movement of the world. Materiality; an ephemeral surface that changes through the day. A surface that converses with light. Creating shadow, movement. Space that expands and contracts. Compresses you, heightens you.

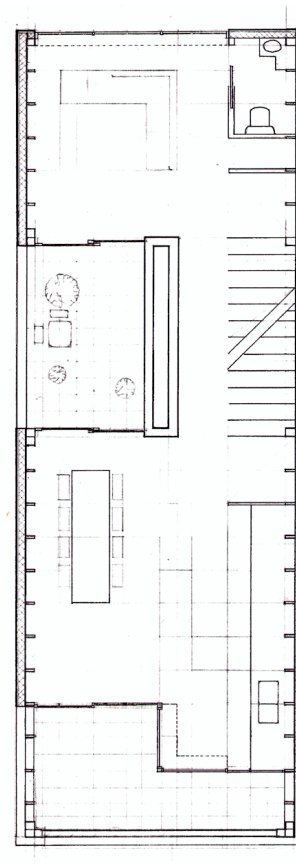
A place of light and dark. A nook that you may call your own. This house attempts to create this atmosphere. Steeped in the richness of dense urbanity, yet carving out nooks of silence for the user.



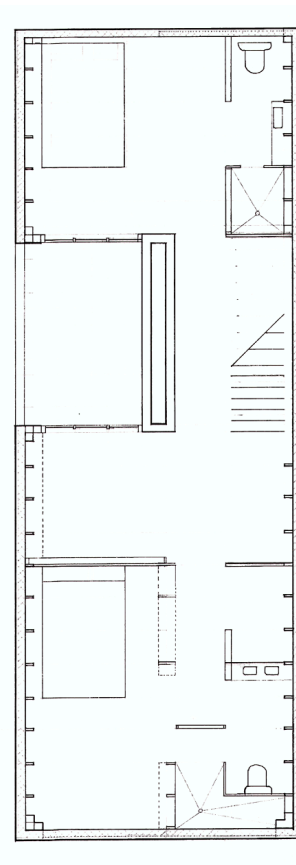




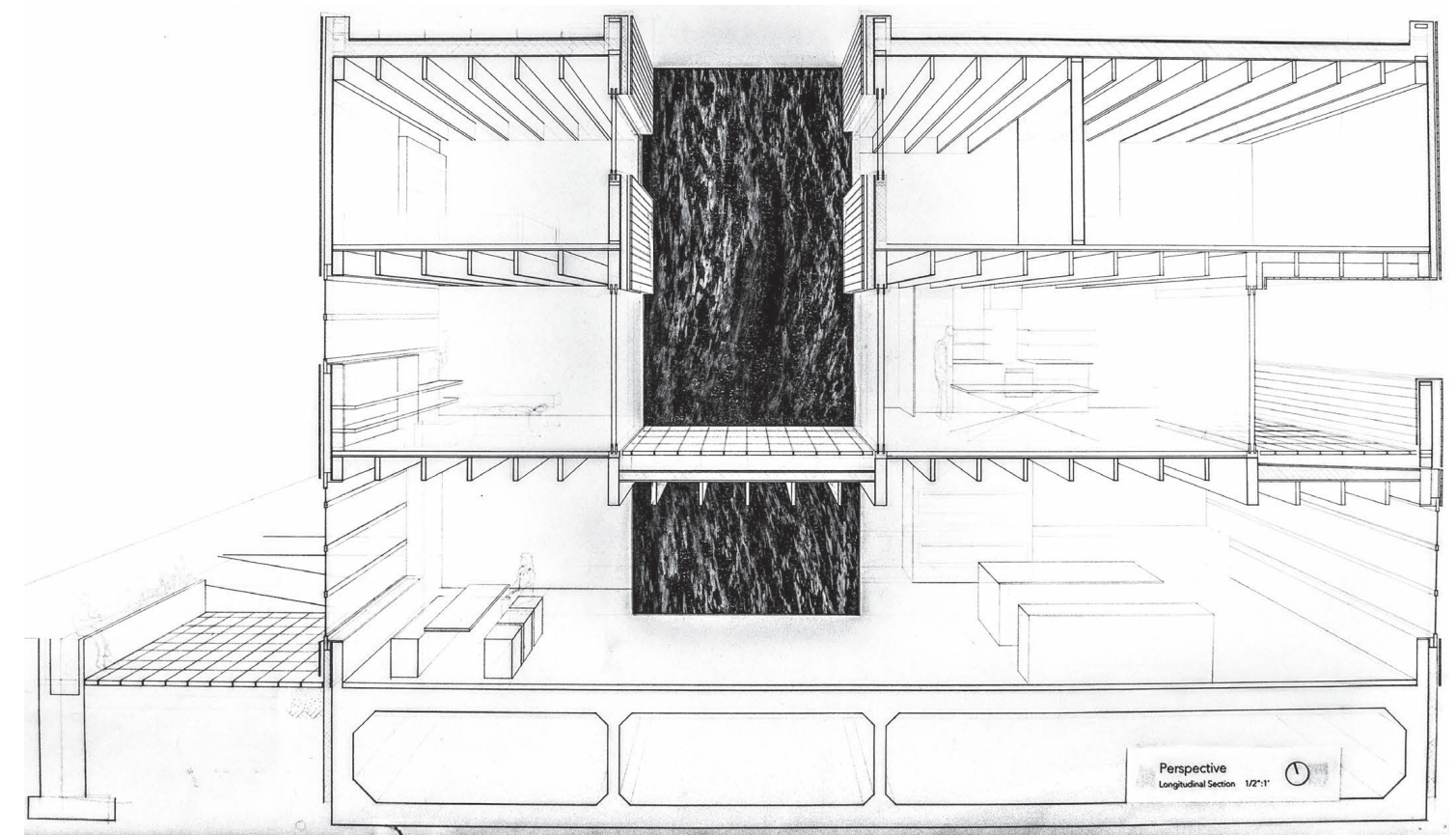
⌚ Ground Floor (Commercial)



Second Floor (Residential)



Third Floor (Residential)

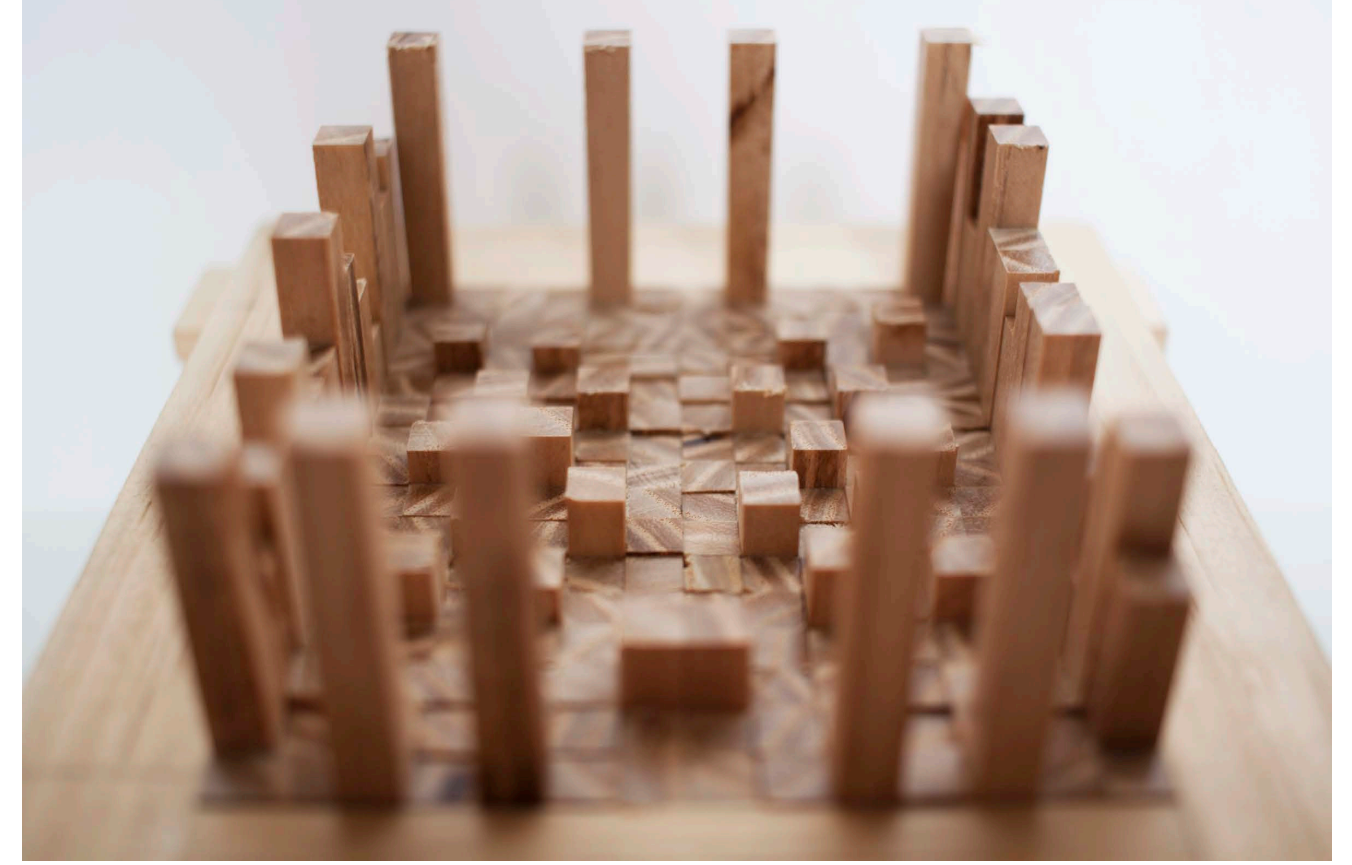


Perspective  
Longitudinal Section 1/2"=1'

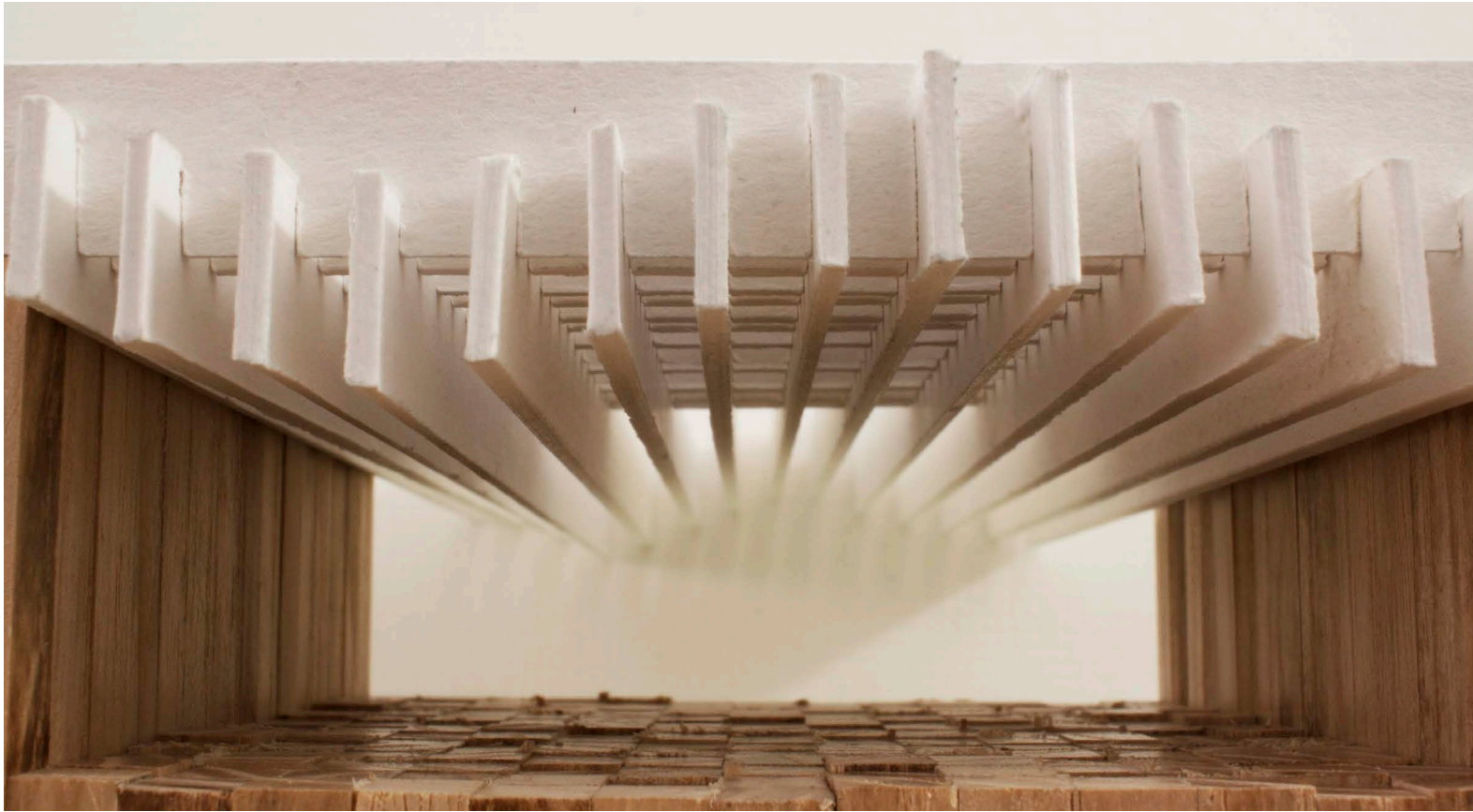




**CUBIT BLOCK**  
A design tool

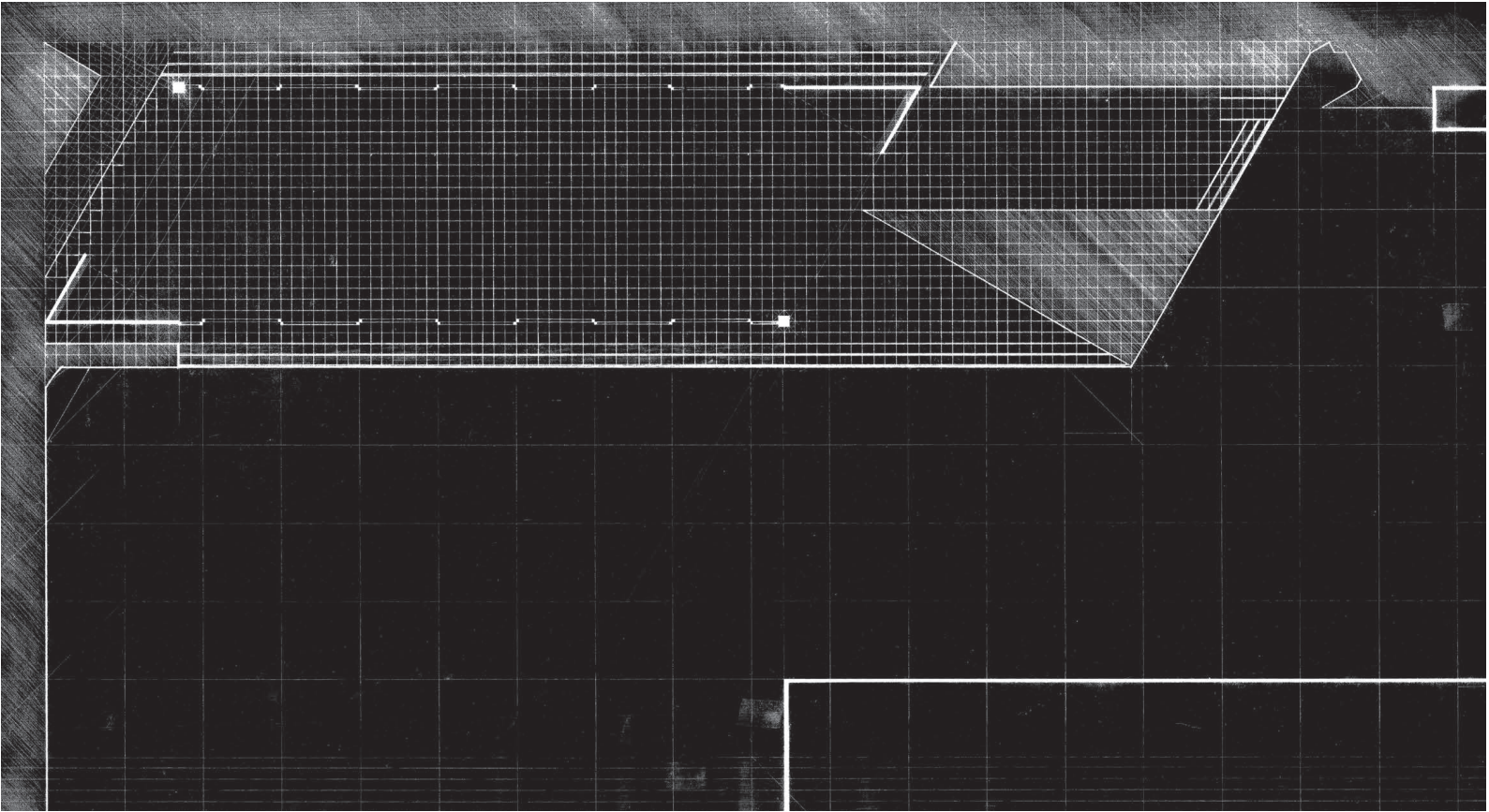






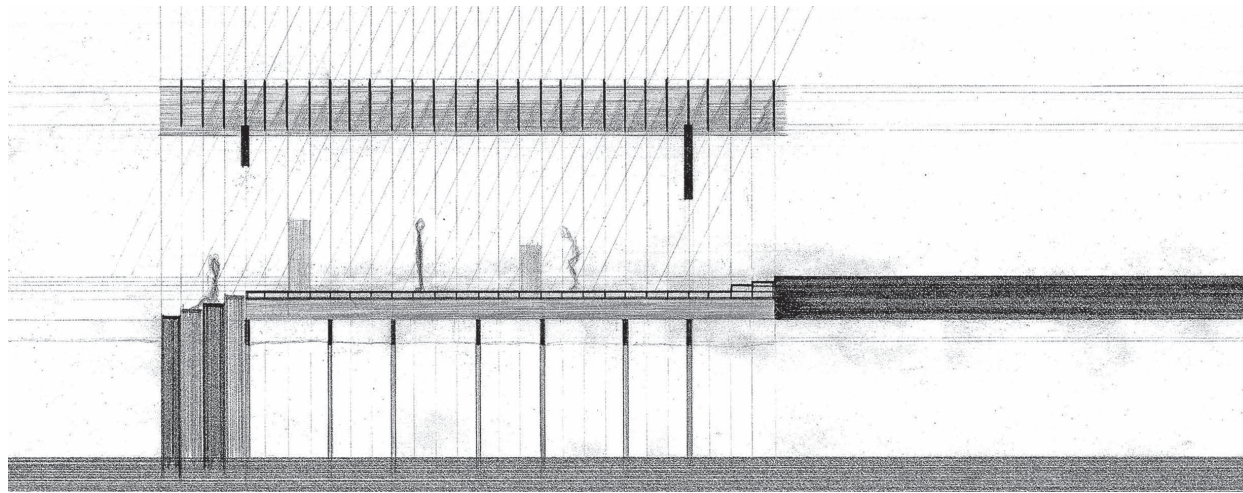
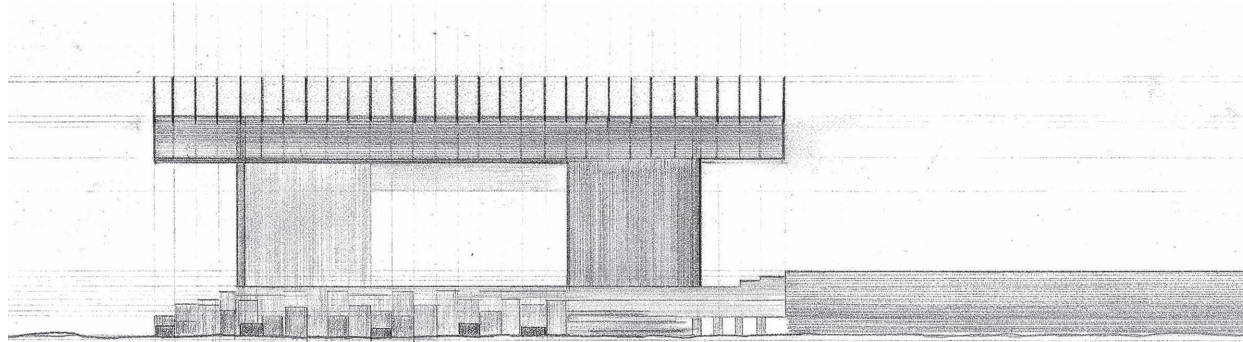
**SWITCH PAVILLION**  
Exhibition Space, Venice, Italy

B1 Design Studio  
Tutor: Cristina Verissimo  
Fall 2016



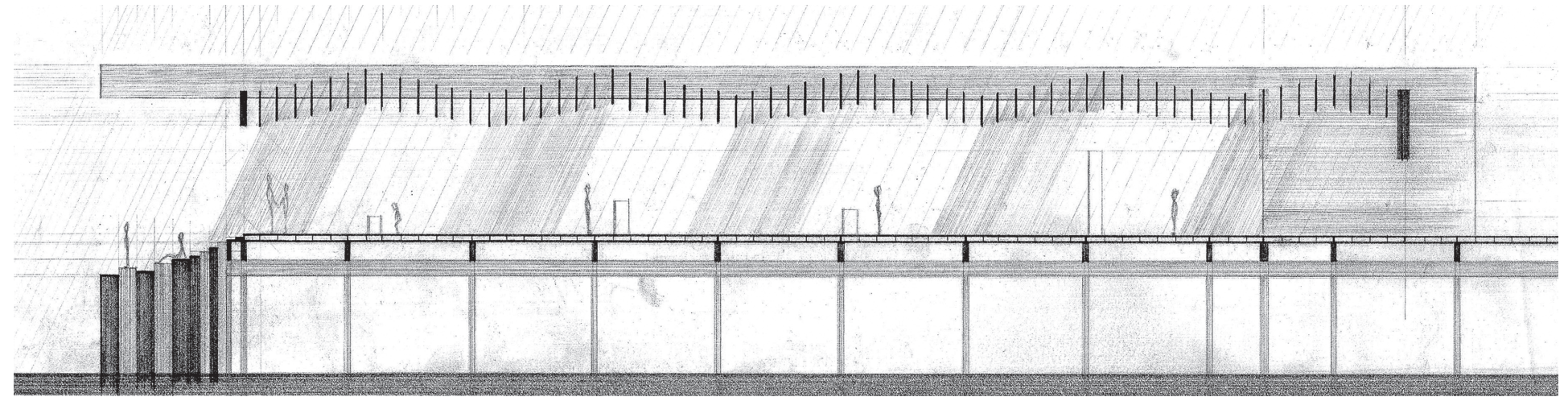
⌚ Ground Floor Plan





A response to Sverre Fehn's Nordic Pavillion, the Switch Pavillion is an exploration of thresholds, structure, and movement through space.

The design is organized by the structural roof element: beams that undulate through the space, playing with light, creating ephemeral rooms with soft thresholds that change throughout the day and year.







**CASE STUDY MODEL**  
Sverre Fehn's Nordic Pavillion

The poetry of construction. How can structure define architecture? How can structure create the atmosphere within space? Blurring the boundaries between inside and out, allowing nature to permeate through structure and space.



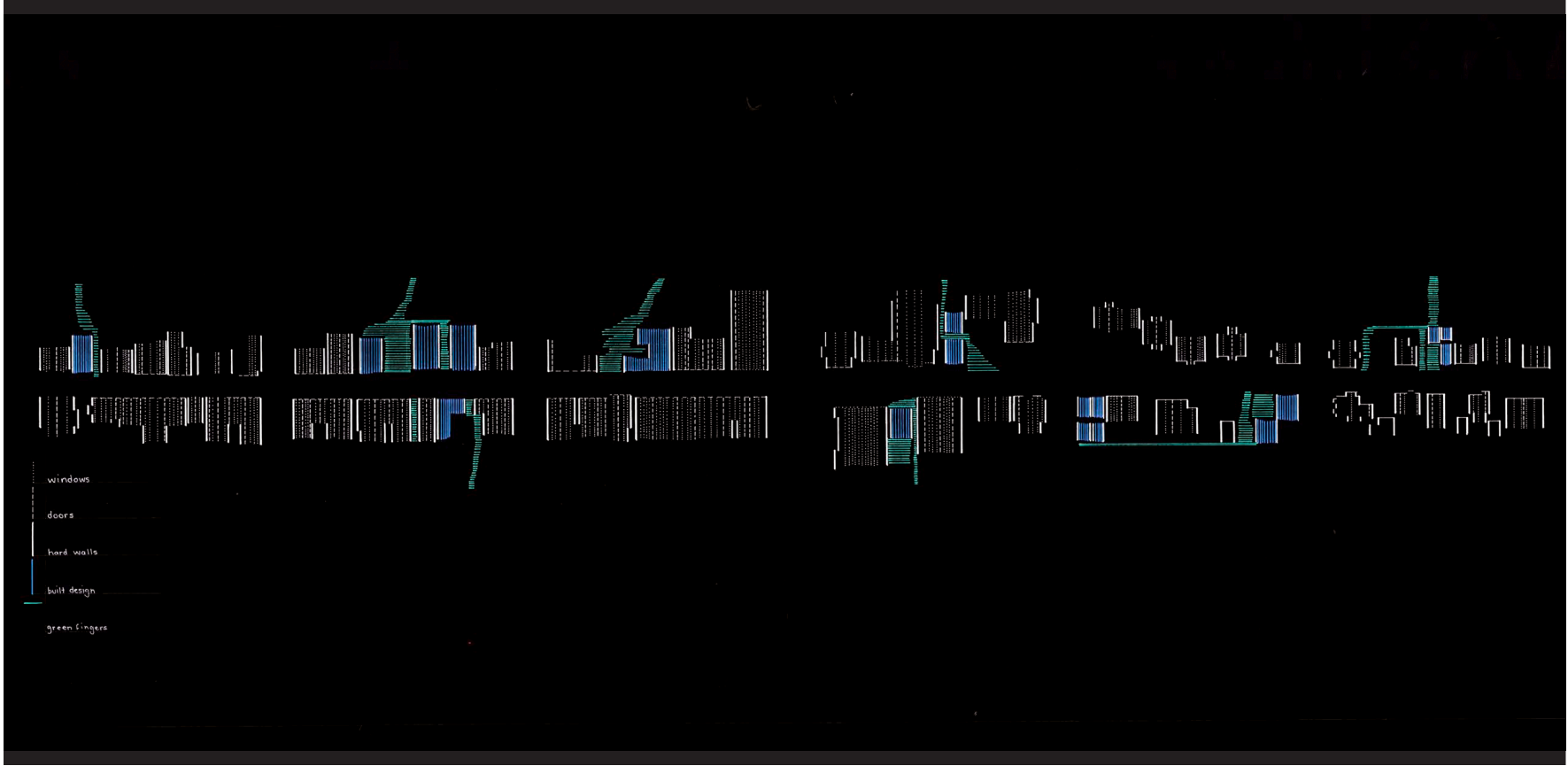




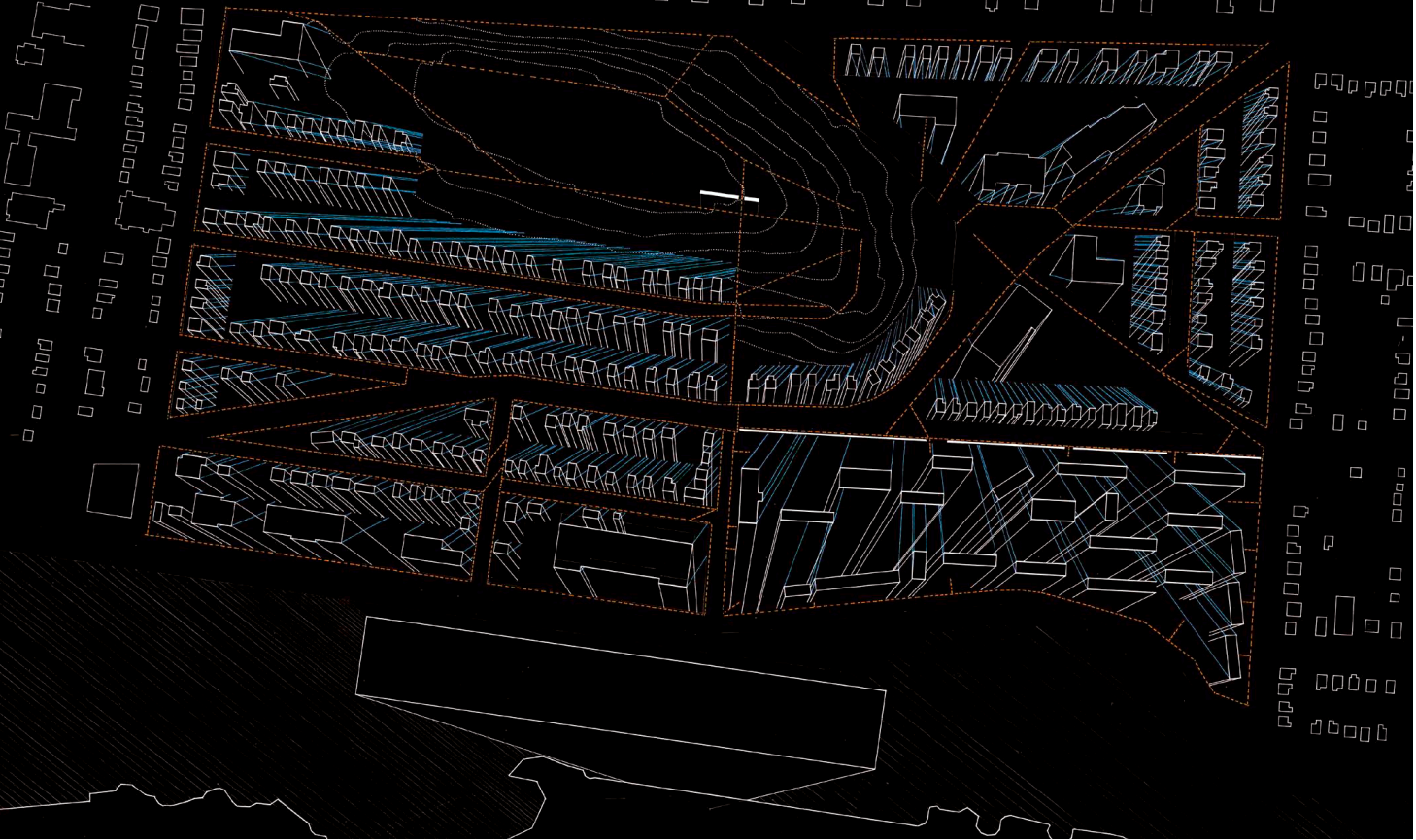
EXPERIMENTAL SPANNING STRUCTURE  
Design Model (1:50)



Building Scale Model (1:5)



**INTERPRETIVE MAPPING**  
Lunenburg, Nova Scotia



North End, Halifax, Nova Scotia



