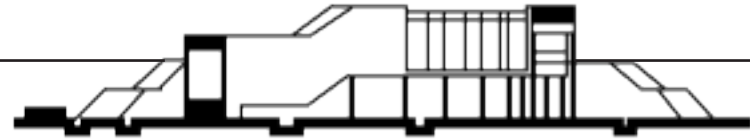
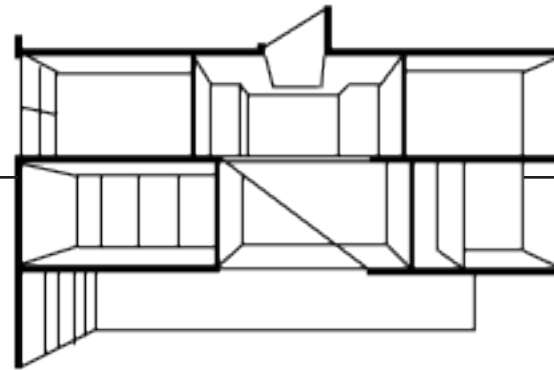


JOHN PATRICK MELLA
POR
TFOLIO

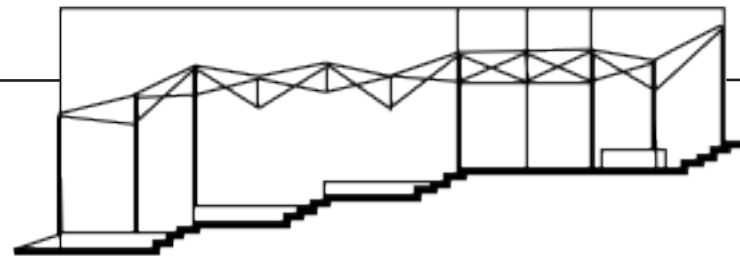
01 Community Garden Pavillion



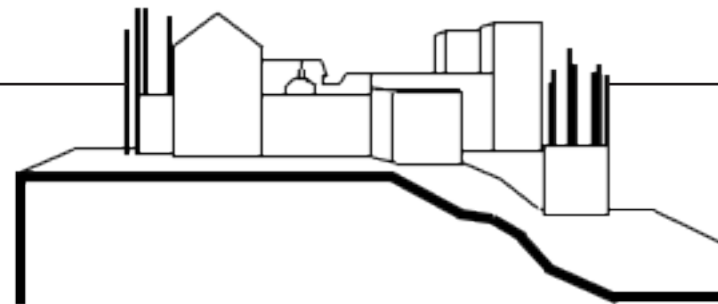
05 Infill Courtyard House



09 Fort Needham Community Center



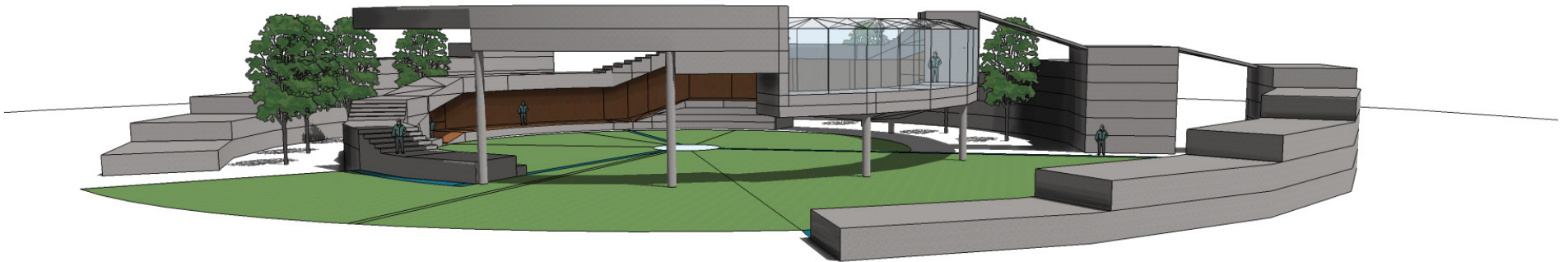
13 Model Making Workshops

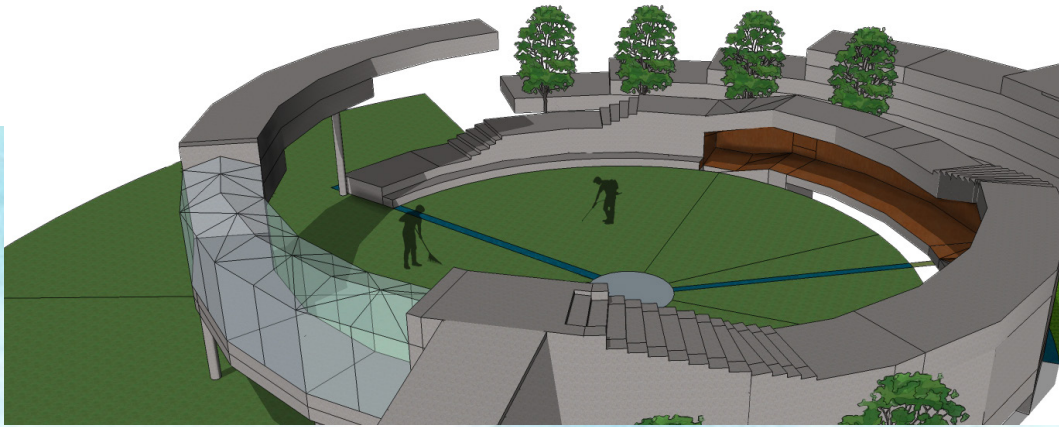




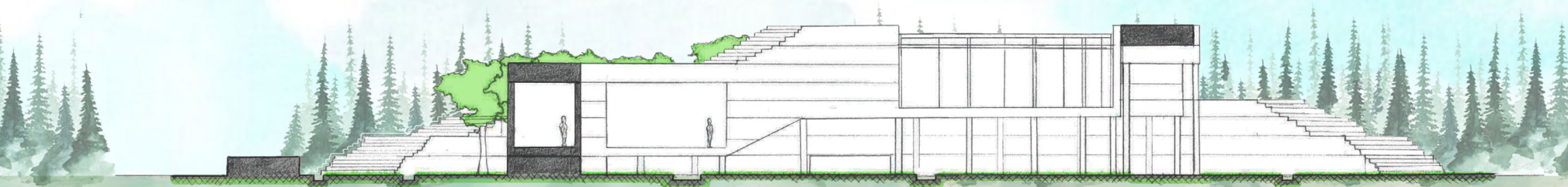
COMMUNITY GARDEN PAVILLION

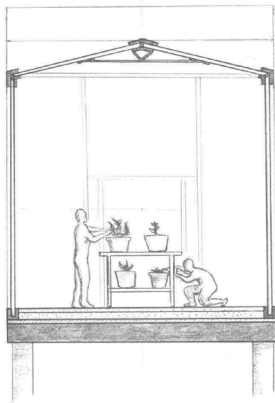
This project was designed as a response to a case-study of Bramante's Tempietto. The design creates a reference to the Tempietto's strong circular forms but addresses the public and engages it.



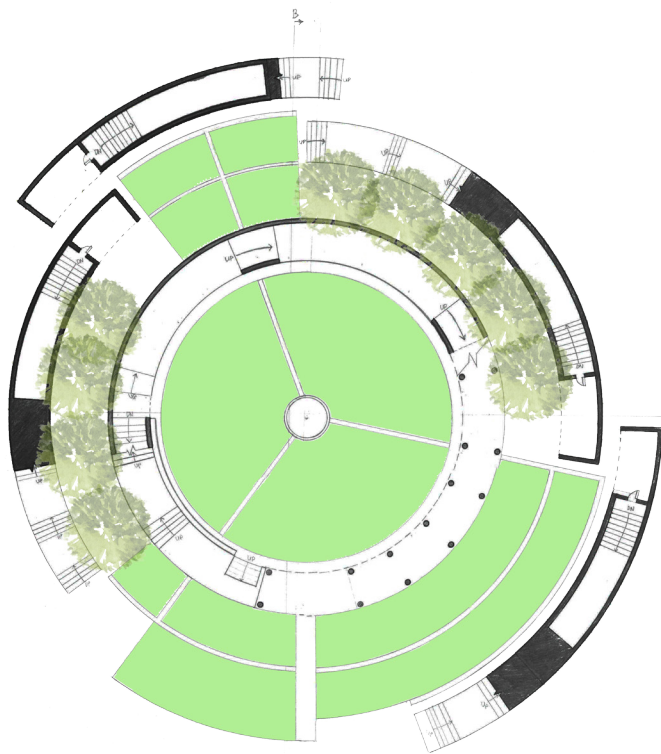


The Community Garden's design allows for a semi enclosed space as a result of the concrete forms emerging out from the ground which creates a distinct separation from the rest of the park, but at the same time is still a part of it. These concrete forms can also be inhabited and are used for different programs such as storage, gathering spaces, and even a stage area. The layout of the garden plots would ideally be radiating from the center similar to a fountain located in the middle with streams radiating outwards in straight lines allowing for easy water distribution. The pavillion also features a greenhouse for plants which require a more controlled environment.

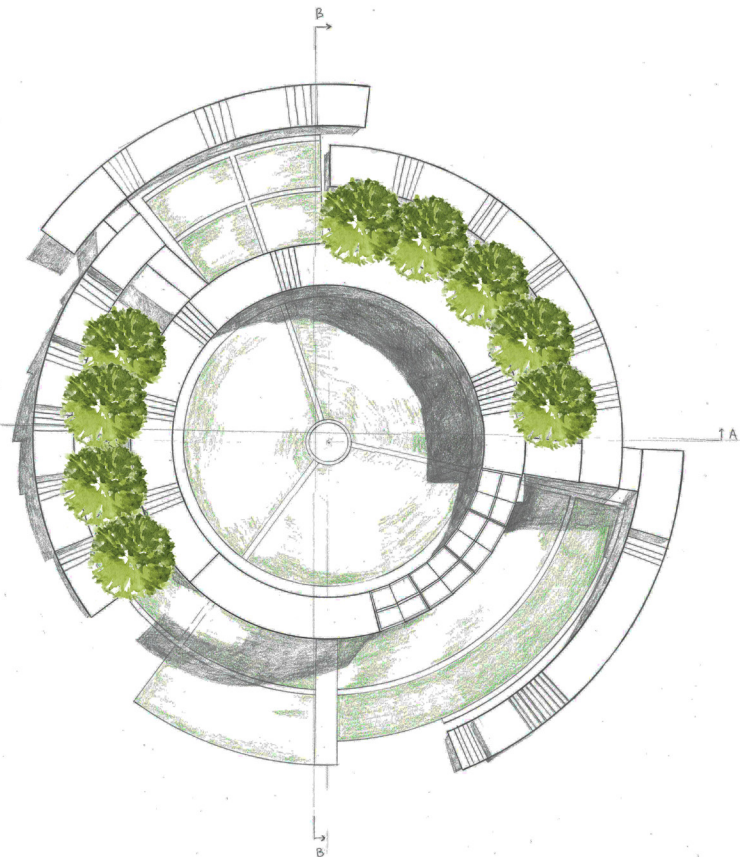


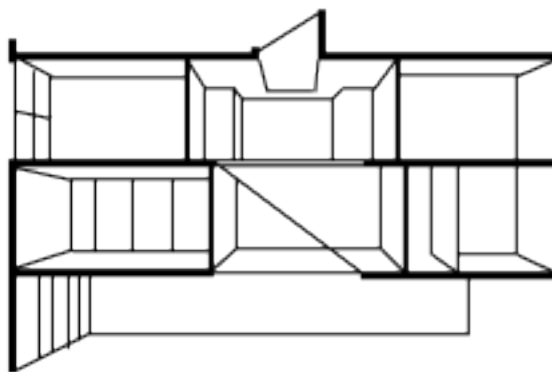


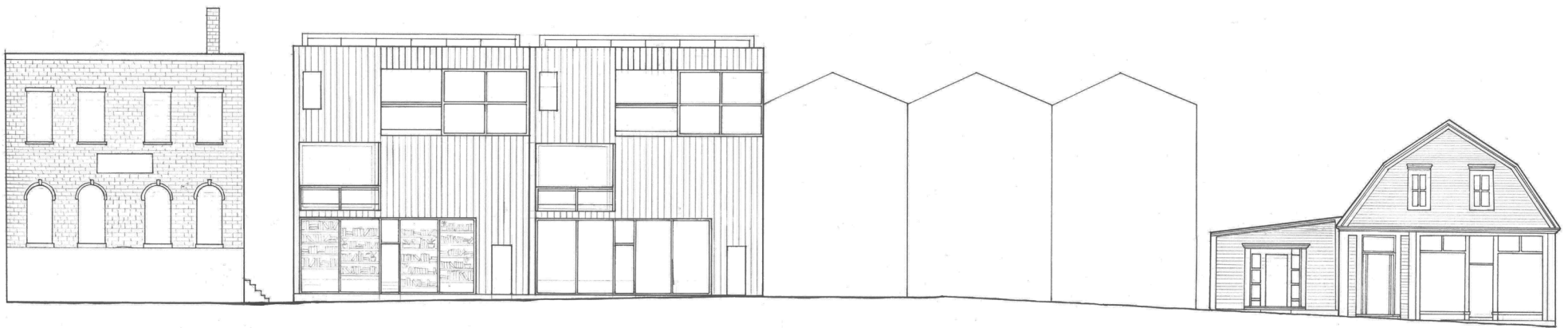
A-C



A

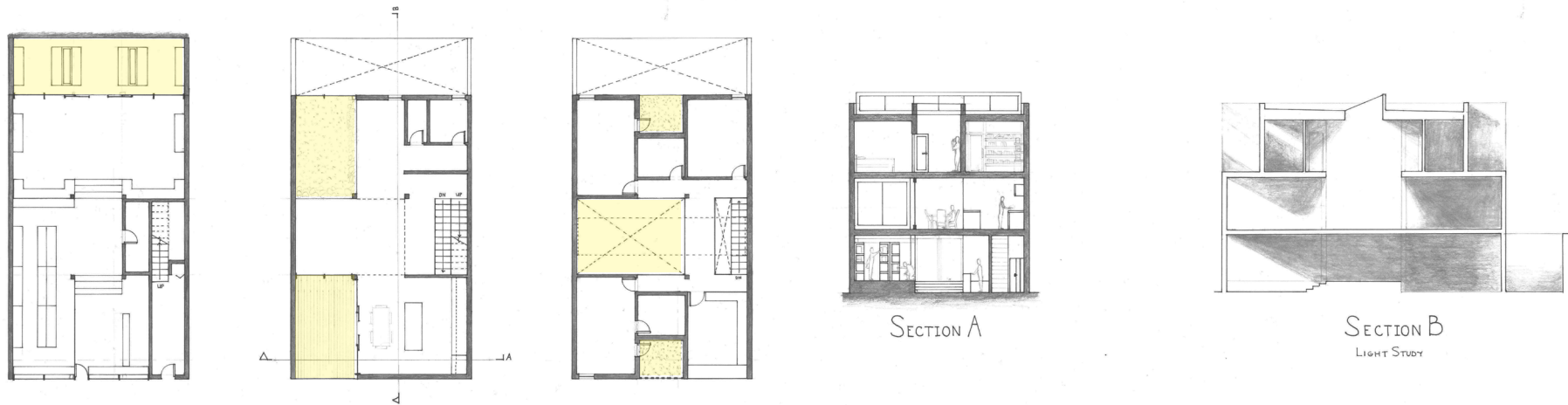






INFILL COURTYARD HOUSE

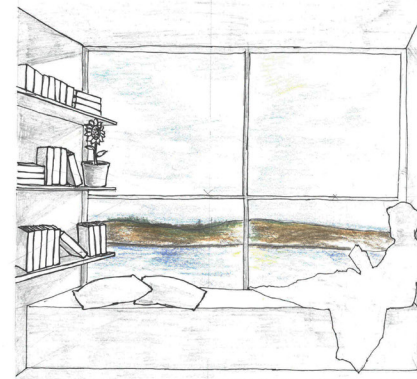
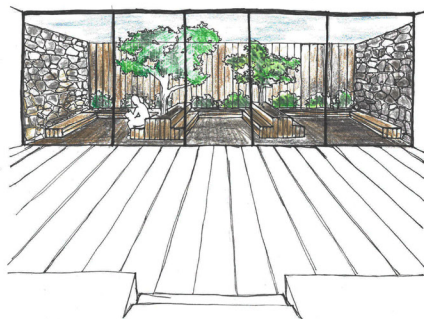
As part of an urban strategy to maintain a tight urban fabric of the retail street in Lunenburg, NS, this design is situated in an empty lot, divided to allow two housing units. The design is intended to be repeatable and constructed on similar sites, in hopes of successfully filling in the gaps of the urban fabric.



The design is that of a mixed-used unit, commercial/retail space on the ground floor and residential unit on the upper levels. The ground space is flexible unit which can accommodate different retail needs, it features an outdoor courtyard which can be used for different programs. The example given features the commercial unit as a bookstore and the courtyard space as a reflection/reading area.

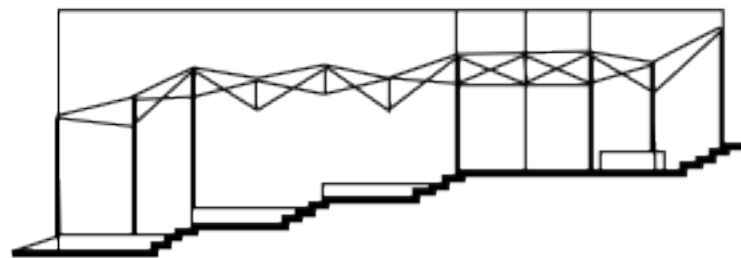
The residential unit is entered through the front facade of the building with a separate entrance. It leads to a small corridor which stairs that lead up to the house. The first level of the house contains the gathering spaces such as the living room, dining room and kitchen. It contains one exterior balcony and one interior space which creates a parallel with the balcony. Upstairs the living room's double height continues through, creating a void in the center, becoming the core which the bedrooms gather around.

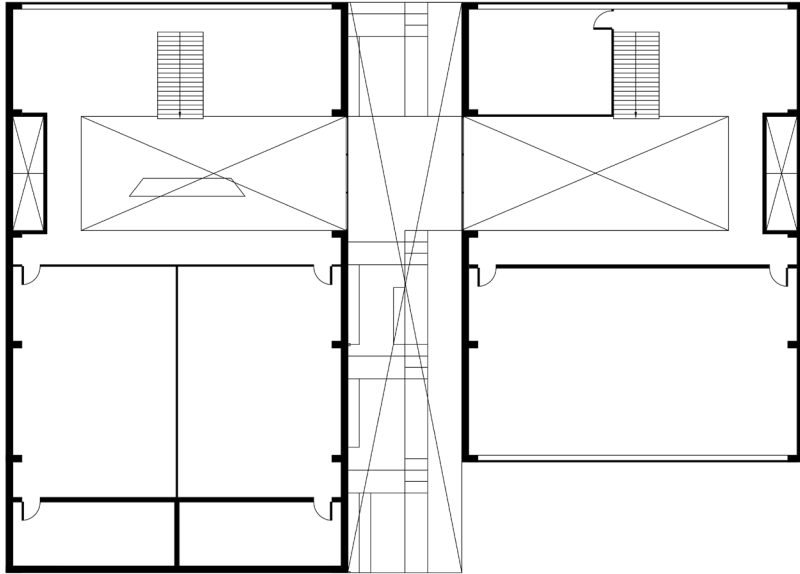




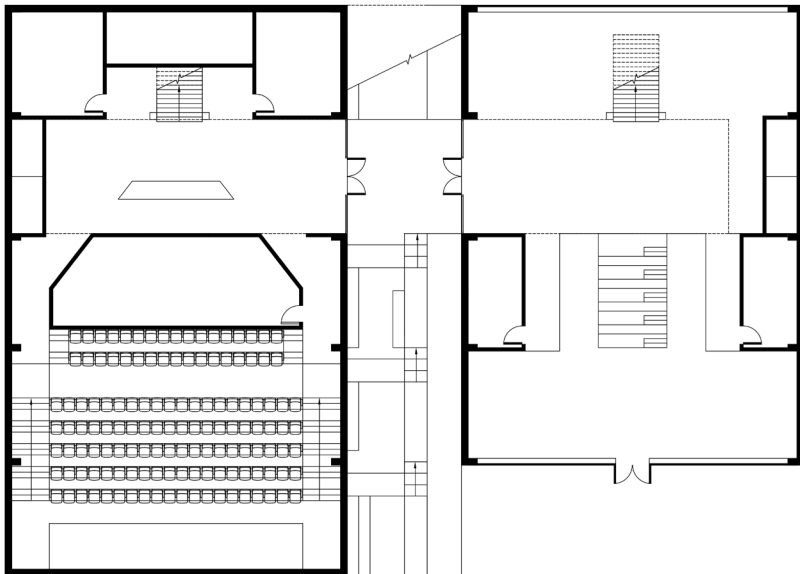
The design takes precedence from courtyard types. It features courtyard-like spaces or voids which evoke the same spatial and architectural qualities that a courtyard would, an attempt at adapting the courtyard type to an environment like Nova Scotia.

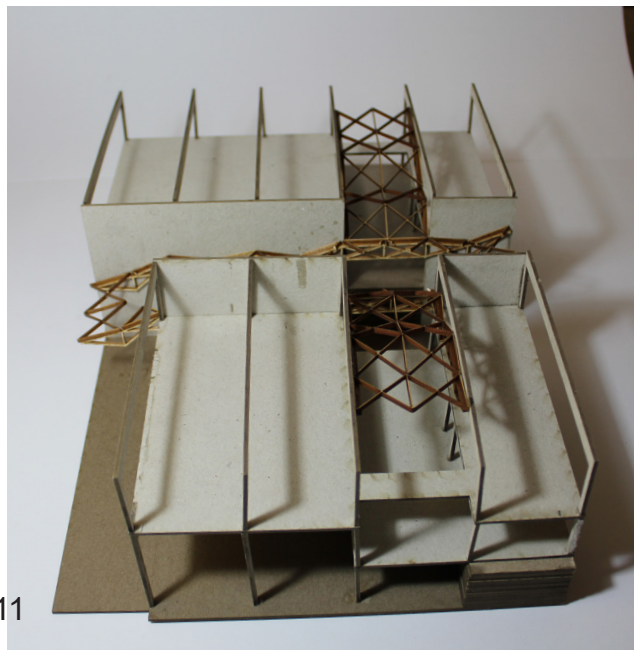
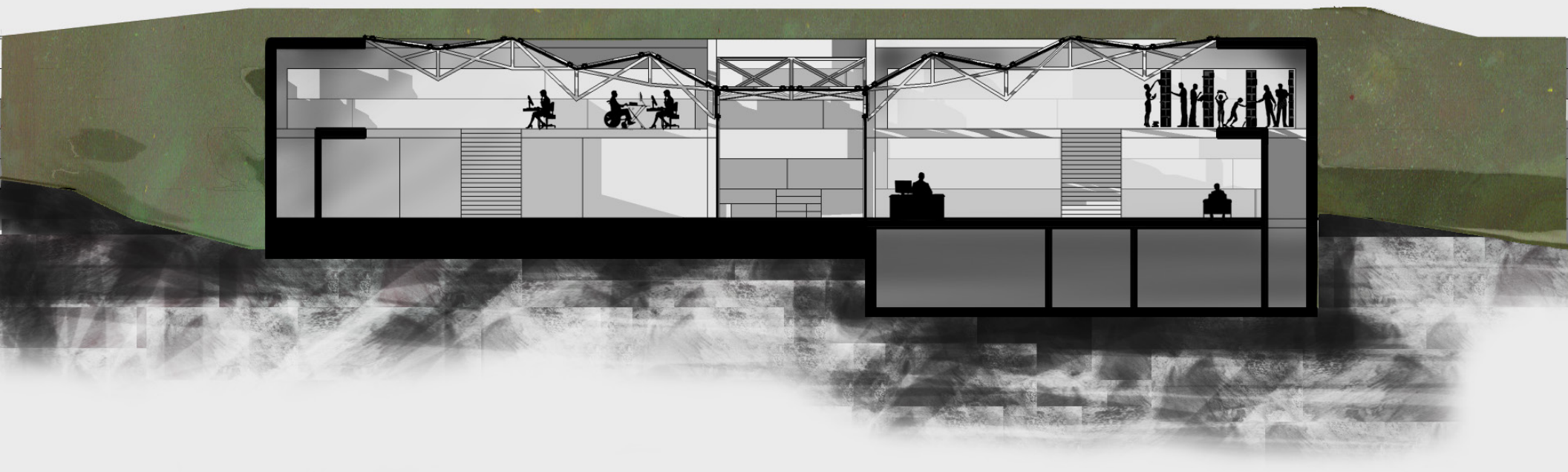


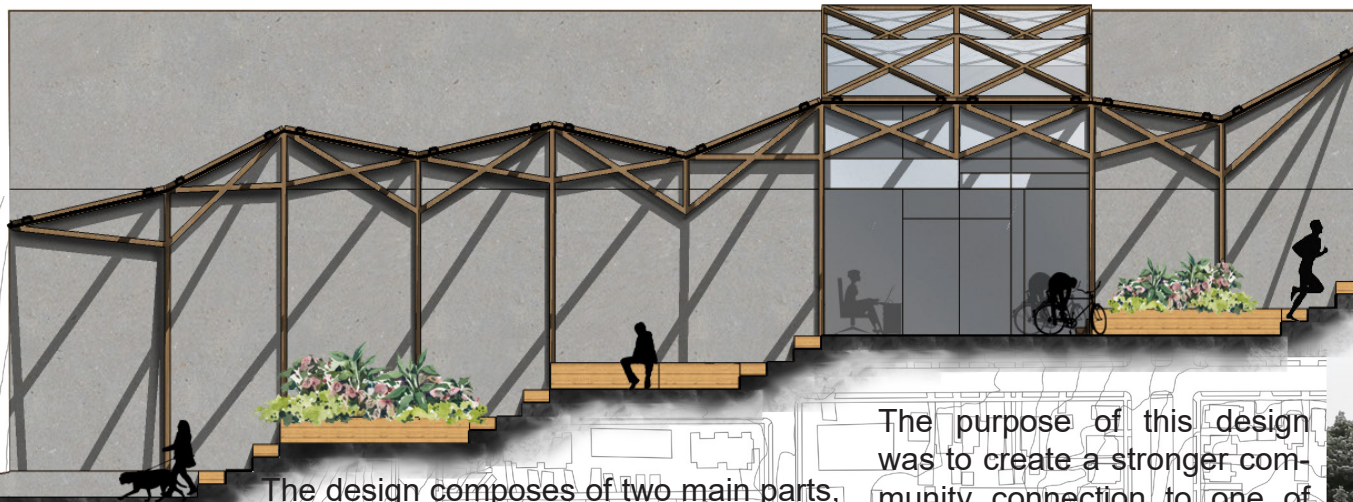




FORT NEEDHAM PARK COMMUNITY CENTER
The intent of this design was to replace an existing community center to better accommodate the younger generations as well as to give proper commemoration of a historical event that shaped the community.



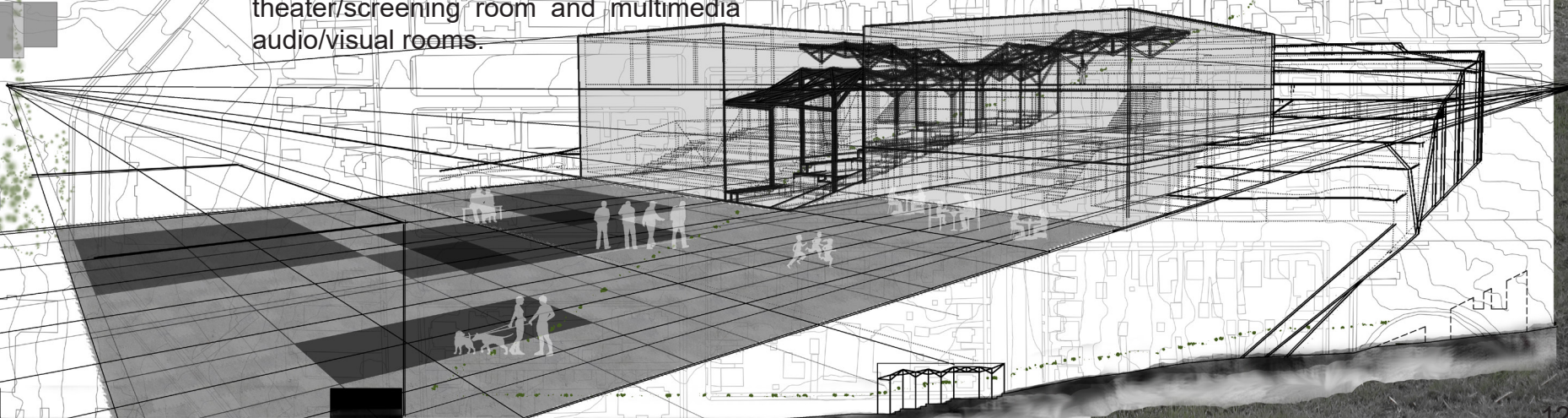


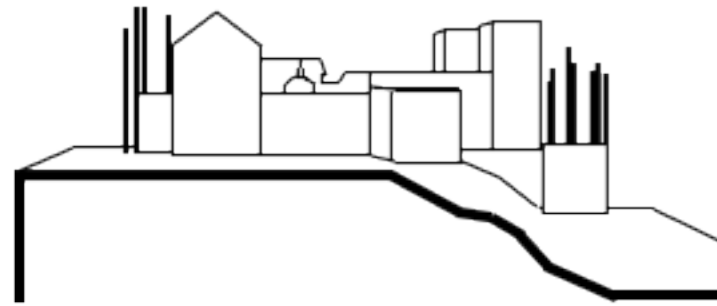


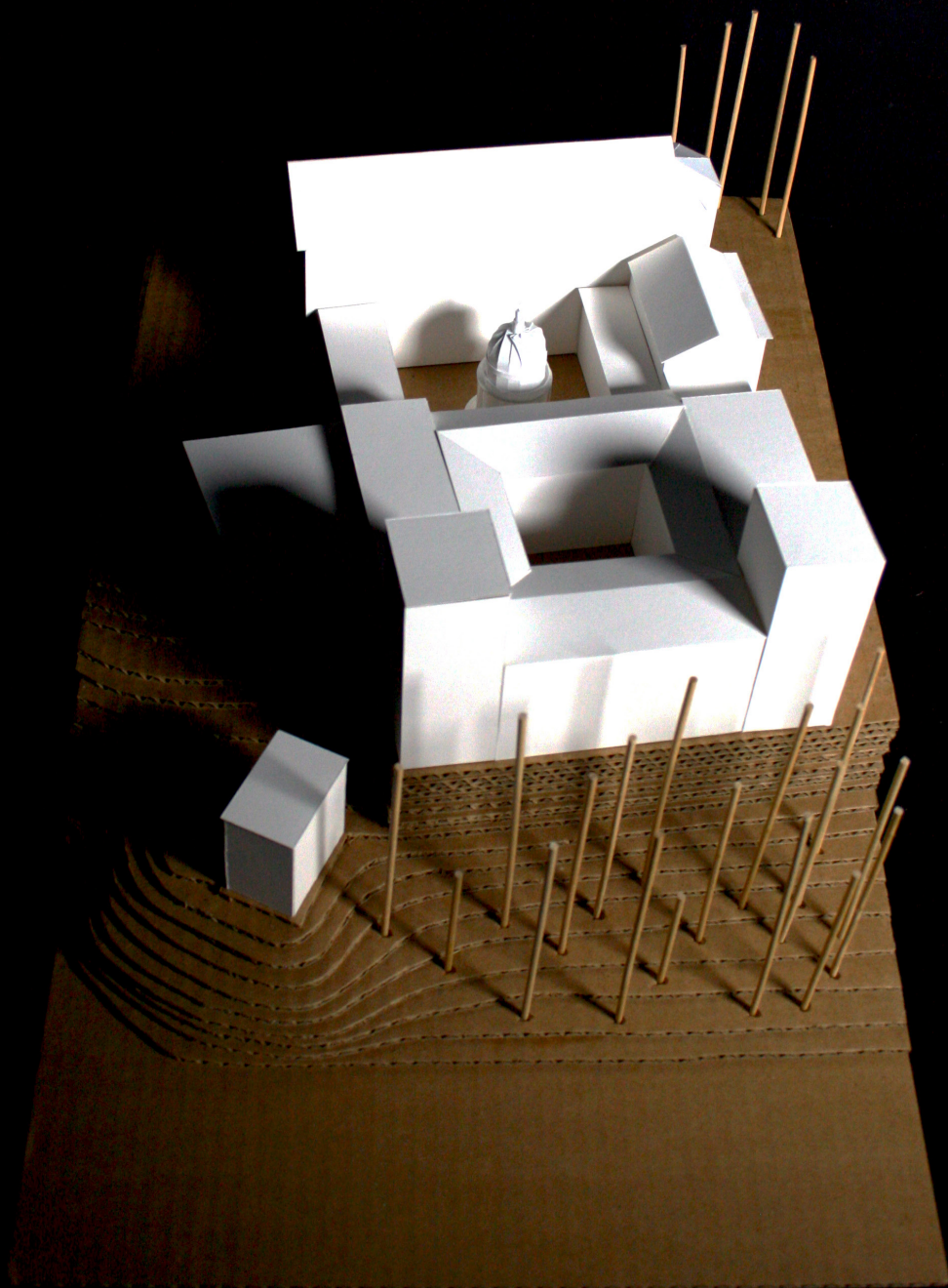
The design composes of two main parts, the two rectilinear concrete volumes and the light wooden canopy structure in the middle.

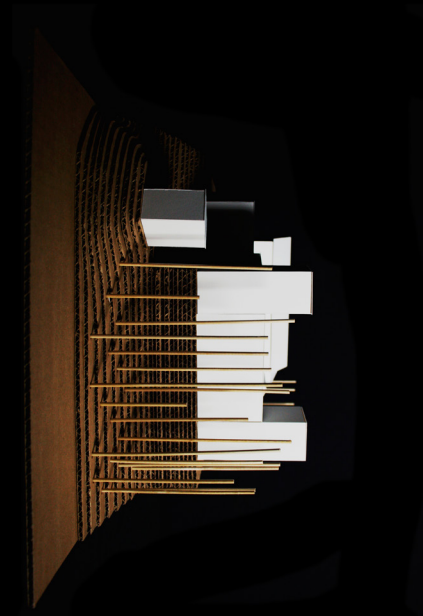
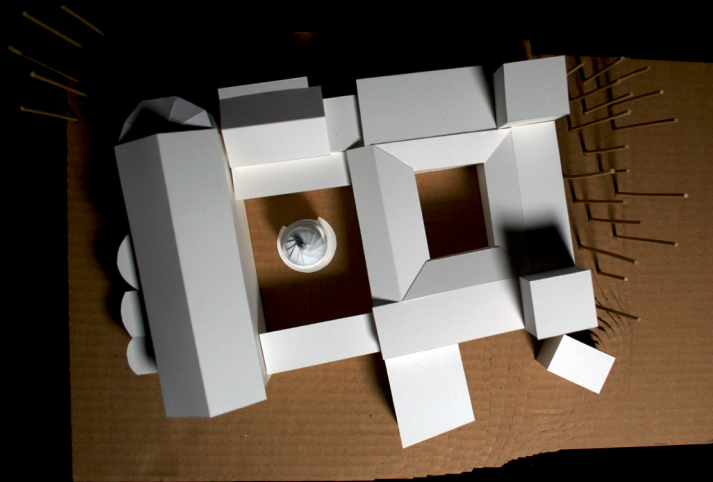
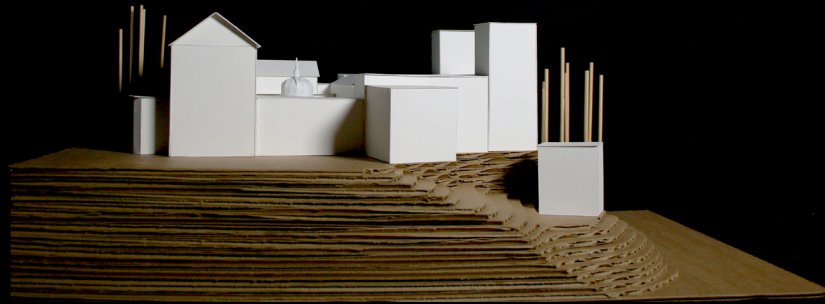
The space is divided programmatically with the public gathering spaces located within one volume, spaces like the cafeteria, a small library, a computerlab and a research center dedicated to the Halifax. The other volume contains the special programs room such as the community theater/screening room and multimedia audio/visual rooms.

The purpose of this design was to create a stronger community connection to one of Halifax's most memorable event, the Explosion of 1917. It does this not only through the dedicated research center but also by creating a physical and direct connection using the canopy structure. This creates a framed view towards the memorial and allows the public to move from the plaza to the memorial and vice versa.

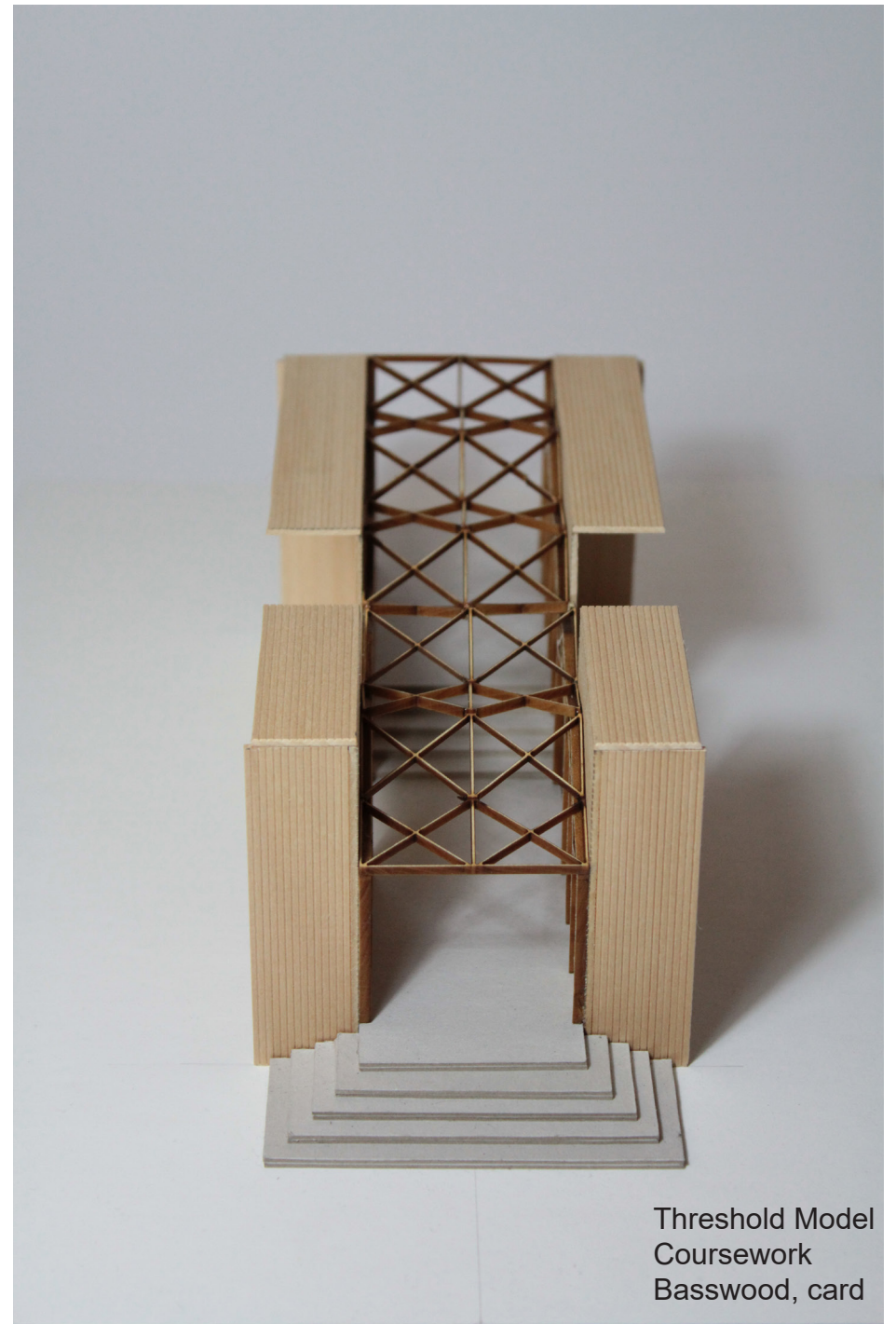
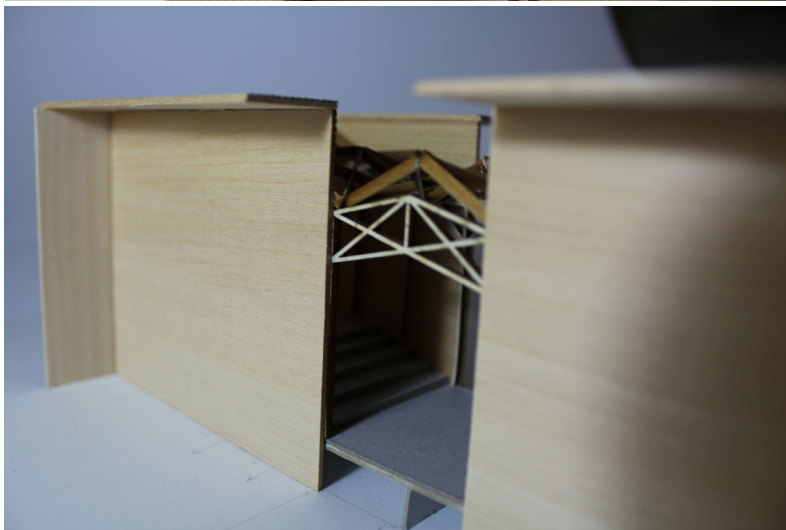
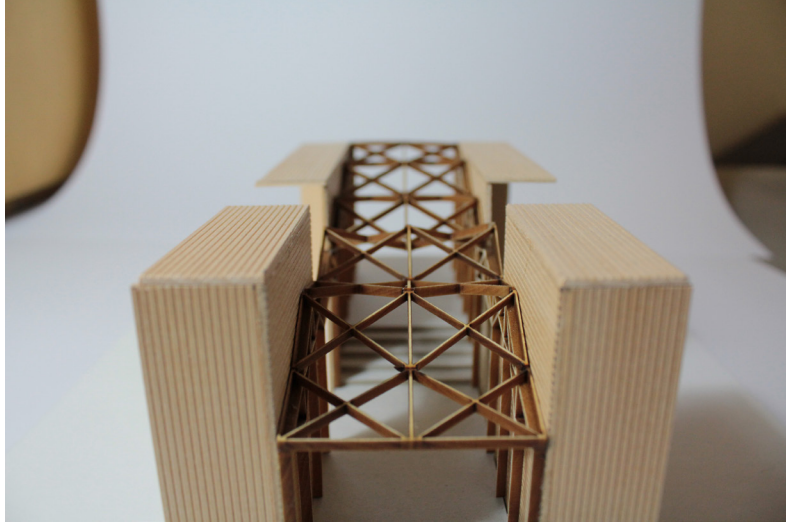








Massing/site model for Tempietto
Case study
Corrugated Card, White Card



Threshold Model
Coursework
Basswood, card

Thank you for taking the time to review my work

John Patrick Mella
johnpatrickmella@gmail.com
403-813-4591

