

Public Health Governance: Emerging themes from community engagements across Canada

Sarah Jervis¹, Christina Holmes², Shawn H.E. Harmon¹, Benjamin Malo³, Elisabeth Hunter², Janice E. Graham¹
Dalhousie University¹, St. Francis Xavier University², Université Laval³

PROBLEM

There is a pressing need for better public health institutions, policies, programs, and practices so communities can flourish. Having heard from public health authorities (political and professional elites), we then set out:

- To collect and analyze the experiences of marginalized communities across Canada;
- To develop a public health framework that reflects the values, experiences, and needs of all communities on a planet where animals, plants, and environments matter to one another

METHODS

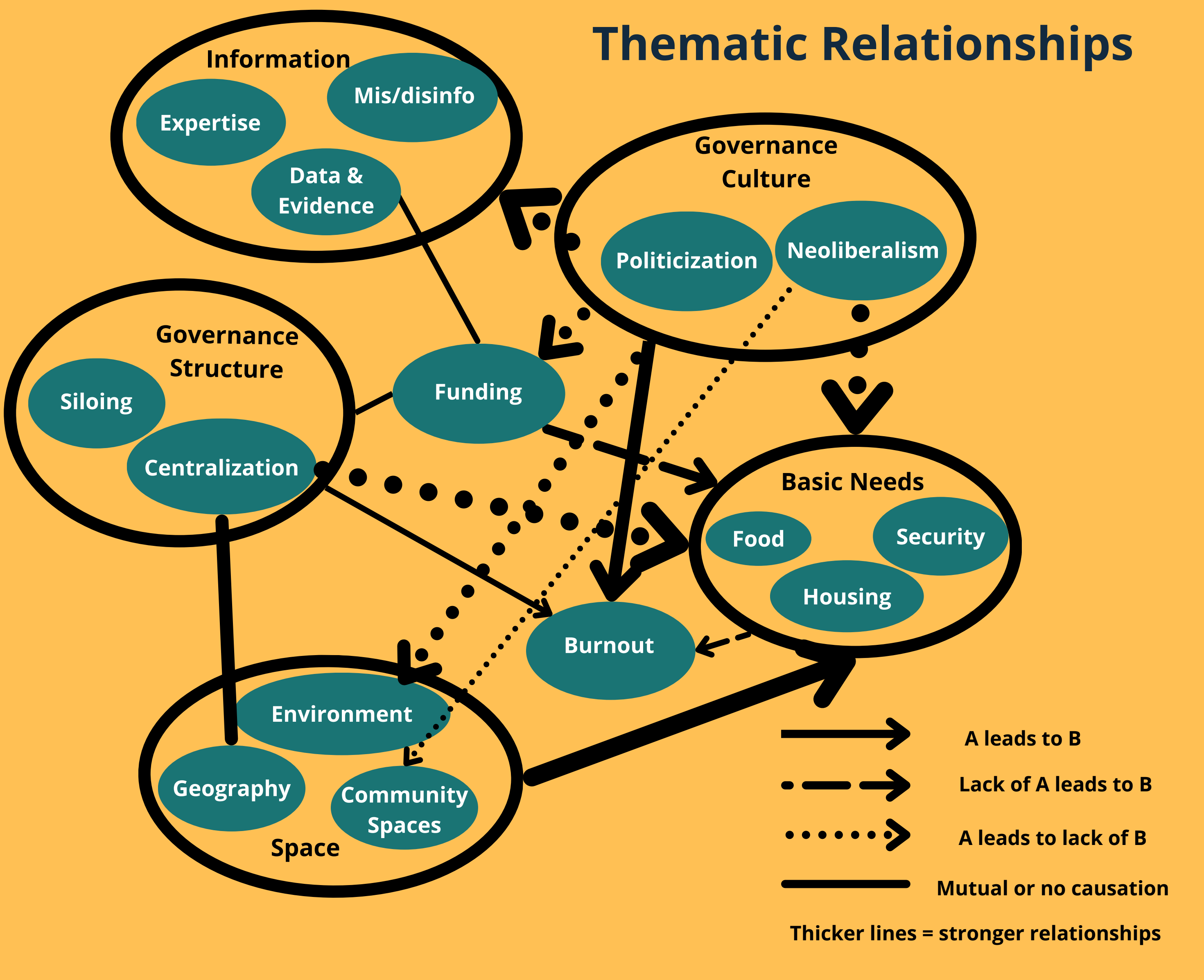
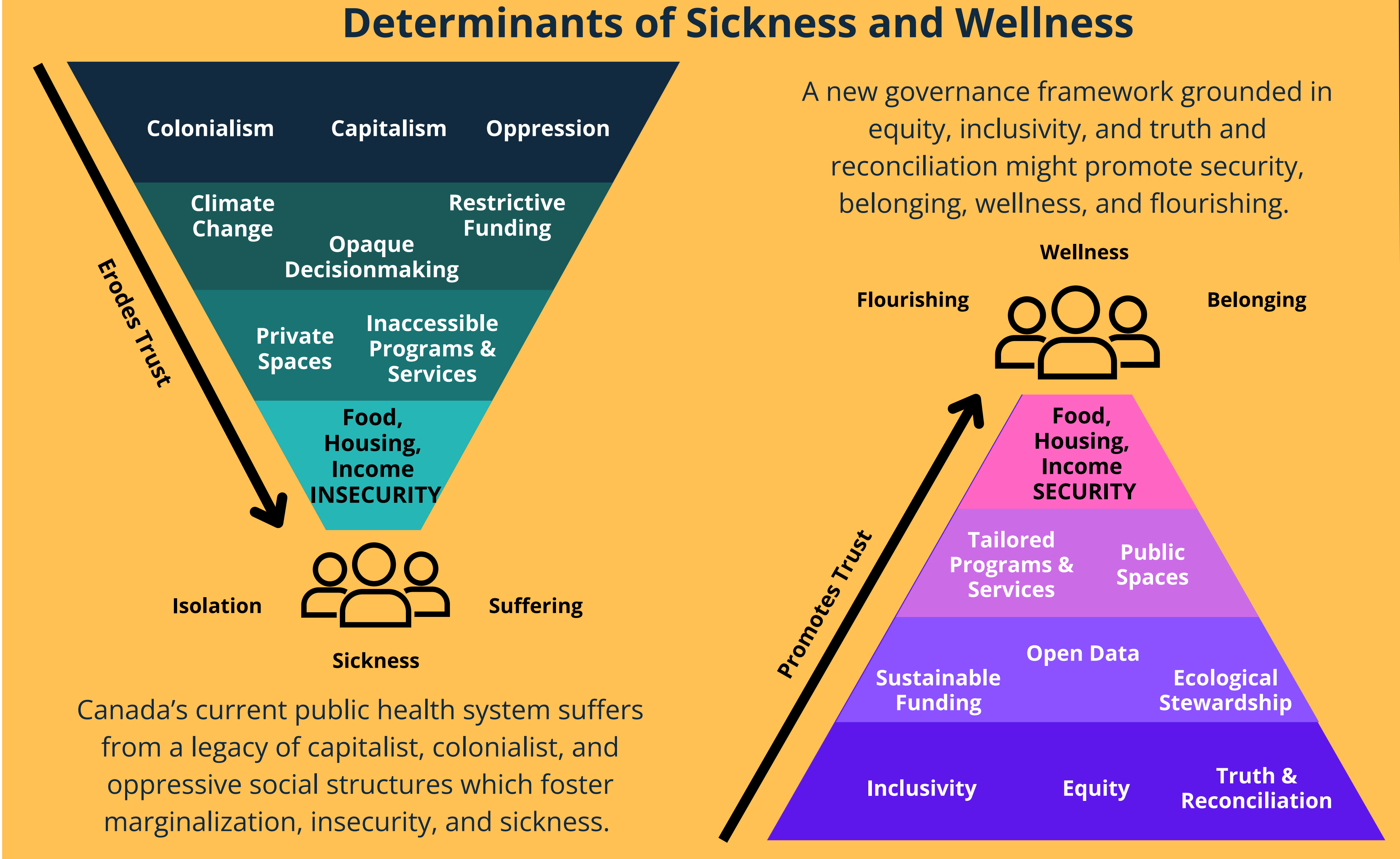
- 7 semi-structured virtual **focus groups (FG)** between May 27 - June 19 2024
- FGs represented 5 provinces (NS, QC, ON, AB, BC), health workers and Indigenous voices.
- Structured discussion and real-time polling using Mentimeter and Google Jam Board:
 - What supports wellbeing in your communities?
 - What are your communities' strengths & weaknesses?
 - What values and practices are critical to public health?
 - Who do you trust to make good public health decisions?
 - What might improve public health?
- Inductive and deductive thematic analysis

DEMOGRAPHICS (N=56)

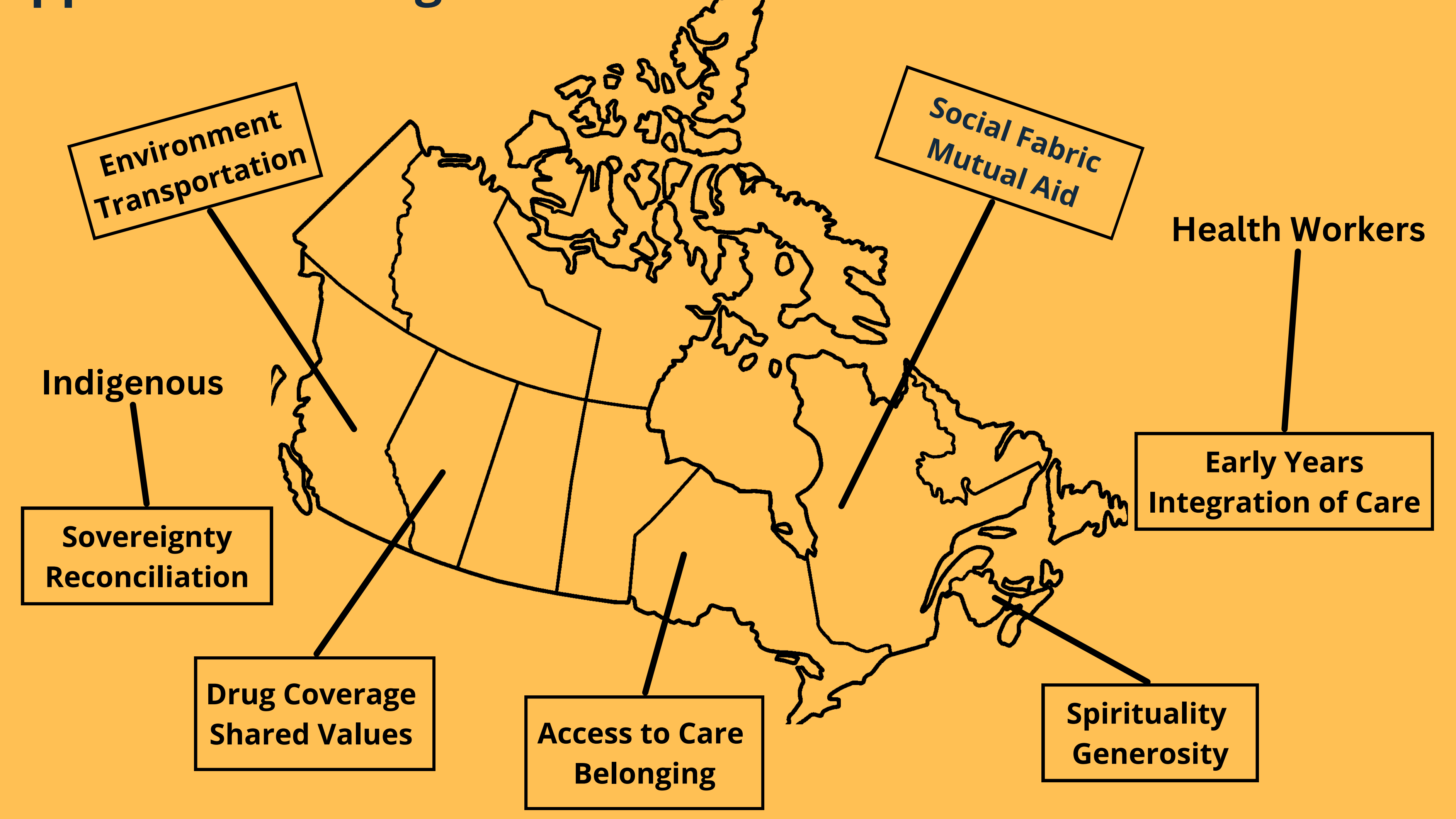
Gender		Age	
Man	13	20-39	20
Woman	36	40-59	18
NB/2Spirit	4	60-79	9
No Answer	3	No Answer	9

Ethnic identity		Location	
Black/African	4	Alberta	8
S/E/SE Asian	6	BC	15
White/European	27	NS	11
Indigenous	16	Ontario	9
No Answer	2	Quebec	13

RESULTS - Thematic Analysis



What Supports Wellbeing ?



Participants' responses to Question 1 using real-time polling software. Larger text size indicates higher frequency. Participants submitted multiple responses.

DISCUSSION

- Trust in public health systems has been eroded by historic oppression and misinformation
- Essential needs and programs are too often unaffordable, unavailable or inaccessible
- Local knowledge, context, and lived experiences must be present and made integral to all public health decision making

CONCLUSIONS

- Secure housing, food, and income are pressing public health needs
- Public common spaces promote community belonging
- Co-creating programs in communities helps to address local need
- Openness, accountability, and reciprocity promote and sustain public trust, commonwealth and public health

ACKNOWLEDGEMENTS

Funded by the Canadian Institutes of Health Research (#179934)
Reciprocity Connects facilitated focus groups
Brianna Legere assisted with coding
Interested in learning more about our public health governance project? Scan the QR code or visit www.trru.ca

