

Dalhousie University, Department of Facilities Management

Confined Space Inventory Form

Building: <u>Tupper F200</u>	Room Number: <u>MR</u>	Date: <u>June 19, 2013</u>
Confined Space No: <u>F200 – MR – 01</u>	Confined Space Class: _____	
Description of Space: <u>Elevator Sump Pit</u> <u>Confined space is located in the back right hand corner of the carpenter storage area off the Mechanical Room</u>		
Construction Material: <u>Concrete with</u>		
Method of Entry: <u>By fixed ladder.</u>	No. of Access / Egress Points: <u>1</u>	
Dimensions of Access / Egress Opening:		
Length: <u>30.00 inches</u>	Width: <u>29.50 inches</u>	Depth: <u>10.0 ft. approx.</u> Diameter: <u>00.0 inches</u>
Type of Work Normally Conducted in Space: <u>Maintenance requirements.</u>		
Frequency of Work Performance: <u>As required.</u>		
Reference Atmospheric Testing: CO _____ ppm H ₂ S _____ ppm O ₂ _____ % LEL _____ %		
Other: _____		

Potential Hazards

List all hazards near the access / egress opening(s) or in the confined space that must be controlled to ensure employee safety.

Potential Hazards	Recommended Control Measures
Oxygen Hazard:	
Electrical Hazards: Shock from power cords for pumps	Disconnect and isolate power source. Keep cords out of water.
Mechanical Hazards:	

<p>Physical Hazards:</p> <p>Water in bottom of pit. Possible inflow from pipe at top of pit.</p>	
<p>Chemicals Hazards:</p>	
<p>Biological:</p>	
<p>Additional Comments:</p>	

Photographs

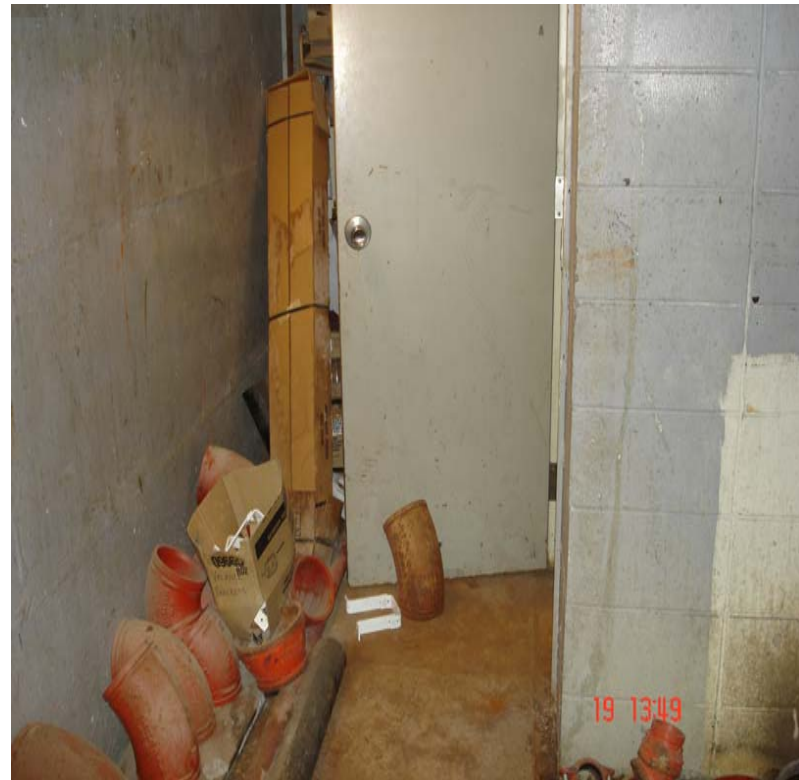


Photo Numbers: 2013 - 06 - 19 (1349)



2013 - 06 - 19 (1349)

List Emergency Procedures:

Assessment Conducted By: _____

Signature: _____

Phone number: _____

Date: _____