

Dalhousie University, Department of Facilities Management

Confined Space Inventory Form

Building: <u>Central Services Bldg.</u>	Room Number: <u>Thermal Plant</u>	Date: <u>October 25, 2011</u>
Confined Space No: <u>CSB – B2 – 06</u>	Confined Space Class: _____	
Description of Space: (B2 in the confined space number refers to number of the boiler.) <u>Boiler # 2, Steam Drum, Back, Water and steam side.</u> <u>Top of boiler.</u>		
Construction Material: <u>Steel</u>		
Method of Entry: <u>Crawl into space. Must back out to exit.</u>		No. of Access / Egress Points: <u>1</u>
Dimensions of Access / Egress Opening:		
Height: <u>14.0 inches</u>	Width: <u>18.0 inches</u>	Depth: _____ Diameter: _____
Type of Work Normally Conducted in Space: <u>Clean and inspect fire box.</u>		
Frequency of Work Performance: <u>Annually or as required.</u>		
Reference Atmospheric Testing: CO _____ ppm H ₂ S _____ ppm O ₂ _____ % LEL _____ %		
Other: _____		

Potential Hazards

List all hazards near the access / egress opening(s) or in the confined space that must be controlled to ensure employee safety.

Potential Hazards	Recommended Control Measures
Oxygen Hazard:	
Electrical Hazards:	
Mechanical Hazards:	

<p>Physical Hazards:</p> <p>Steams lines. Water lines.</p>	
<p>Chemicals Hazards:</p>	
<p>Biological:</p>	
<p>Additional Comments:</p>	

Photographs

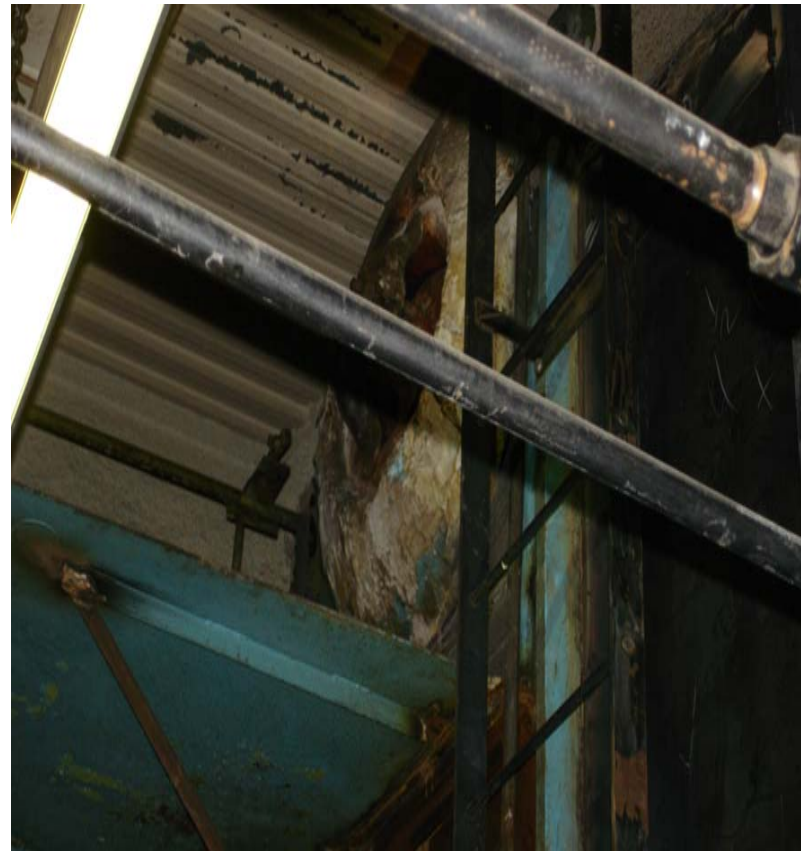


Photo Numbers: 2011 - 10 - 25 - 11



2011 - 10 - 25 - 12

List Emergency Procedures:

Assessment Conducted By: _____

Signature: _____

Phone number: _____

Date: _____