

**Dalhousie University, Department of Facilities Management**

**Confined Space Inventory Form**

Building: <u>Studly Gym C600</u>	Room Number: <u>Compressor Room</u>	Date: <u>July 04, 2013</u>
Confined Space No: <u>C600 – CR – 01</u>	Confined Space Class: _____	
Description of Space: <u>Utility Tunnel Located in what was the compressor room for the Dalhousie rink. Utility lines are for domestic hot and cold water, condensate, steam, sanitary, storm water, electrical and heating water.</u>		
Construction Material: <u>Concrete</u>		
Method of Entry: <u>Crawling.</u> No. of Access / Egress Points: <u>1</u>		
Dimensions of Access / Egress Opening: Entrance point at bottom of first set of stairs is:  <u>Height: 42.0 inches</u> <u>Width: 21.0 inches</u>		
Type of Work Normally Conducted in Space: <u>Repairs and replacement of various service lines.</u>		
Frequency of Work Performance: <u>As required.</u>		
Reference Atmospheric Testing: CO _____ ppm H <sub>2</sub> S _____ ppm O <sub>2</sub> _____ % LEL _____ %		
Other: _____		

### Potential Hazards

List all hazards near the access / egress opening(s) or in the confined space that must be controlled to ensure employee safety.

Potential Hazards	Recommended Control Measures
Oxygen Hazard:	
Electrical Hazards:  Electrical Lines	
Mechanical Hazards:	

<p>Physical Hazards:  Hot water  Water  Asbestos  Heat  Steam Lines</p>	<p>Isolate water lines and lock out.  Sample concrete liner to determine whether there is asbestos.  Ventilate inside of tank to ensure safe working temperature.  Isolate and lock out.</p>
<p>Chemicals Hazards:</p>	
<p>Biological:   Sewage</p>	
<p>Additional Comments:</p> <p>To enter the tunnel you descend a couple steps at which point access is restricted to a height of 42.0 inches and a width of 21.0 inches. At this point there is a second set of several stairs. At this point is easiest to get on your hands and knees and back down the stairs. The height in the first 12.0 ft. of tunnel is restricted at which point it increases to 6.0 ft. + for about 45.0 ft. At this point there are a number of restrictions that cross the tunnel at various heights.</p>	

## Photographs

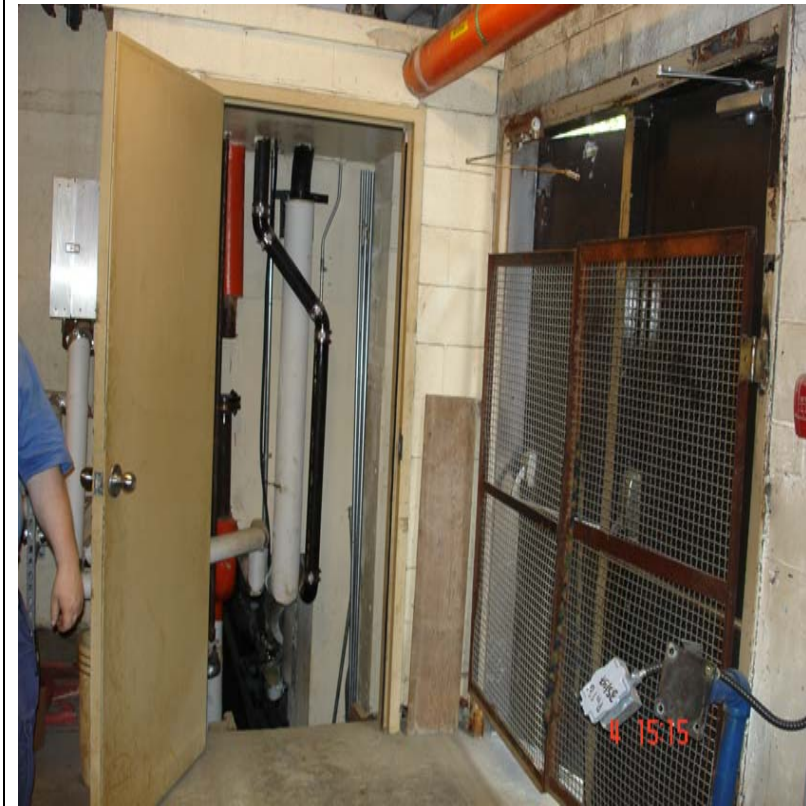


Photo Number: 2013 - 07 - 04 (1515)



2013 - 07 - 04 (1506)

List Emergency Procedures:

Assessment Conducted By: \_\_\_\_\_ Signature: \_\_\_\_\_

Phone number: \_\_\_\_\_

Date: \_\_\_\_\_



Photo: 2013 – 07 – 04 (1504)

