

Dalhousie University, Department of Facilities Management

Confined Space Inventory Form

Building: <u>McCain Bldg.</u>	Room Number: <u>Basement Level</u>	Date: <u>June 18, 2013</u>
Confined Space No: <u>D420 – B – 03</u>	Confined Space Class: _____	
Description of Space: <u>Turn left coming off elevators. First door past stairway.</u> <u>Elevator sump pump pit.</u>		
Construction Material: <u>Concrete with a steel cover.</u>		
Method of Entry: <u>Climbing down ladder.</u>	No. of Access / Egress Points: <u>1</u>	
Dimensions of Access / Egress Opening:		
Length: <u>3.0 ft.</u>	Width: <u>3.0 ft.</u>	Depth: <u>6.0 ft.</u> Diameter: _____
Type of Work Normally Conducted in Space: <u>Servicing of pumps and float switches.</u>		
Frequency of Work Performance: <u>As required.</u>		
Reference Atmospheric Testing: CO _____ ppm H ₂ S _____ ppm O ₂ <u>20.8</u> % LEL _____ %		
Other: _____		

Potential Hazards

List all hazards near the access / egress opening(s) or in the confined space that must be controlled to ensure employee safety.

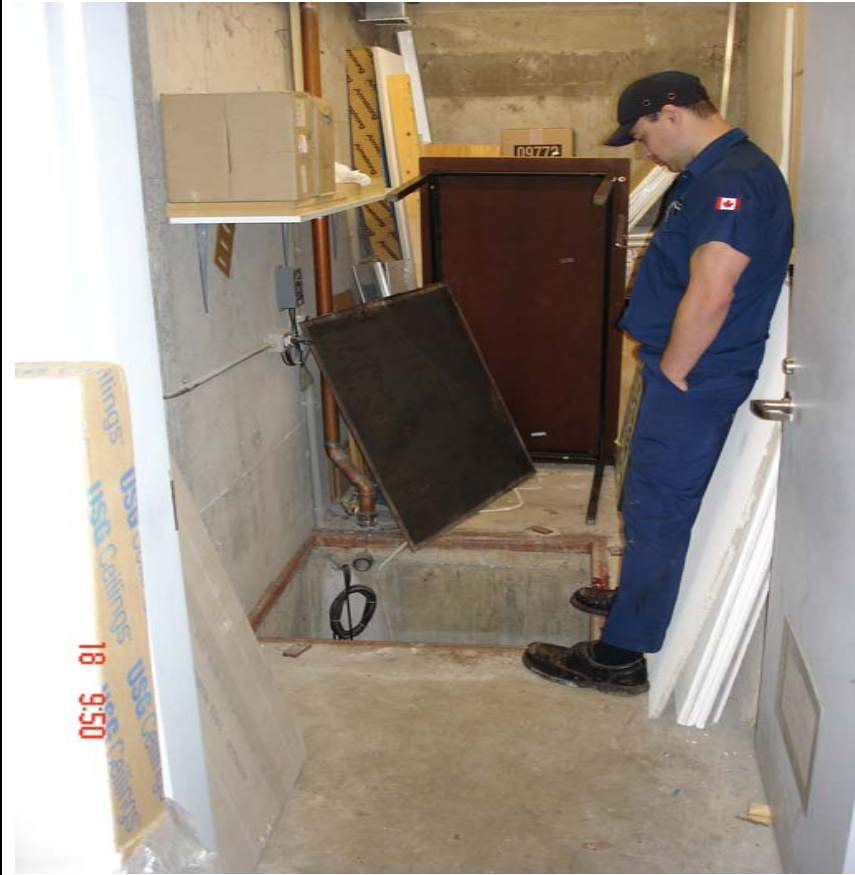
Potential Hazards	Recommended Control Measures
Oxygen Hazard:	
Electrical Hazards: Electrical power to pumps.	Isolate energy sources and lock out.
Mechanical Hazards: Yes	

Physical Hazards:	
Chemicals Hazards:	
Flammables:	
Additional Comments: Two inlet pipes at top of chamber discharge into sump pit. Couple of inches of water in chamber and the highest water mark indicates water levels up to 2 ft. 8 inches.	

Photographs



Photo Numbers: 2013 - 06 - 18 (0950)



2013 - 06 - 18 (0950)

List Emergency Procedures:

Assessment Conducted By: _____

Signature: _____

Phone number: _____

Date: _____