

**Dalhousie University, Department of Facilities Management**

**Confined Space Inventory Form**

Building: <u>Dental Bldg. F100</u>	Room Number: <u>Thermal Plant</u>	Date: <u>October 25, 2011</u>
Confined Space No: <u>F100 – 1736 – 02</u>	Confined Space Class: _____	
Description of Space: <p align="center"><u>Storm water sump pit #5.</u></p> Construction Material: <u>Concrete with steel covers.</u> Method of Entry: <u>A ladder must be lowered into the space.</u> No. of Access / Egress Points: <u>1</u>		
Dimensions of Access / Egress Opening: Length: <u>4 ft. 3.0 inches</u> Width: <u>4 ft. 3.0 inches</u> Depth:                      Diameter: <u>00.0 inches</u>		
Type of Work Normally Conducted in Space: <u>Maintenance and repair of pumps and float valves.</u> Frequency of Work Performance: <u>As required.</u>		
Reference Atmospheric Testing: CO _____ ppm    H <sub>2</sub> S _____ ppm    O <sub>2</sub> _____ %    LEL _____ % Other: _____		

### Potential Hazards

List all hazards near the access / egress opening(s) or in the confined space that must be controlled to ensure employee safety.

Potential Hazards

Recommended Control Measures

Oxygen Hazard:

Electrical Hazards:

Mechanical Hazards:

Physical Hazards:	
Chemicals Hazards:	
Biological:	
Additional Comments:	

## Photographs

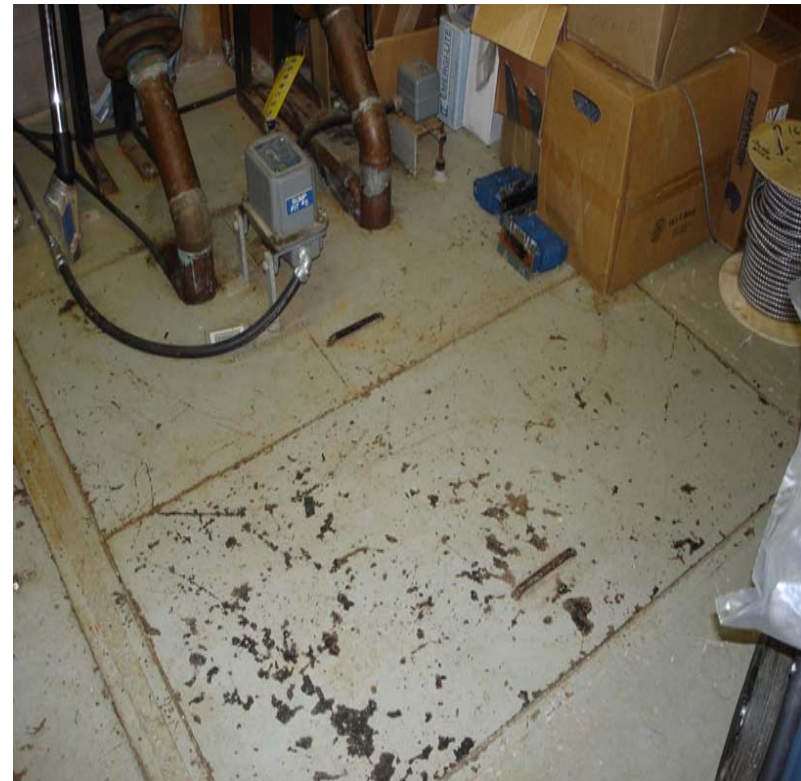


Photo Numbers: 2011 - 10 - 25 - 35



2011 - 10 - 25 - 36

List Emergency Procedures:

Assessment Conducted By: \_\_\_\_\_

Signature: \_\_\_\_\_

Phone number: \_\_\_\_\_

Date: \_\_\_\_\_