

Dalhousie University, Department of Facilities Management

Confined Space Inventory Form

Building: <u>Dental Bldg F100</u>	Room Number: <u>115</u>	Date: <u>June 18, 2013</u>
Confined Space No: <u>F100 – 115 – 01</u>	Confined Space Class: _____	
Description of Space: <p align="center"><u>Elevator Sump Pit.</u></p> <p align="center">Located in Supply / Cleaning Rm. Opposite elevators.</p> Construction Material: <u>Concrete with a aluminium cover.</u>		
Method of Entry: <u>Access by ladder.</u> No. of Access / Egress Points: <u>1</u>		
Dimensions of Access / Egress Opening: Length: <u>32.0 inches</u> Width: <u>32.0 inches</u> Depth: Diameter:		
Type of Work Normally Conducted in Space: <u>Maintenance, repairs and cleaning.</u>		
Frequency of Work Performance: <u>As required.</u>		
Reference Atmospheric Testing: CO _____ ppm H ₂ S _____ ppm O ₂ <u>20.8</u> % LEL _____ % Other: _____		

Potential Hazards

List all hazards near the access / egress opening(s) or in the confined space that must be controlled to ensure employee safety.

Potential Hazards	Recommended Control Measures
Oxygen Hazard:	
Electrical Hazards: Electrical power cords.	Disconnected power cords from electrical outlet keep out of water
Mechanical Hazards: Pumps	

Physical Hazards	
Chemicals Hazards:	
Flammables:	
Additional Comments:	

Photographs

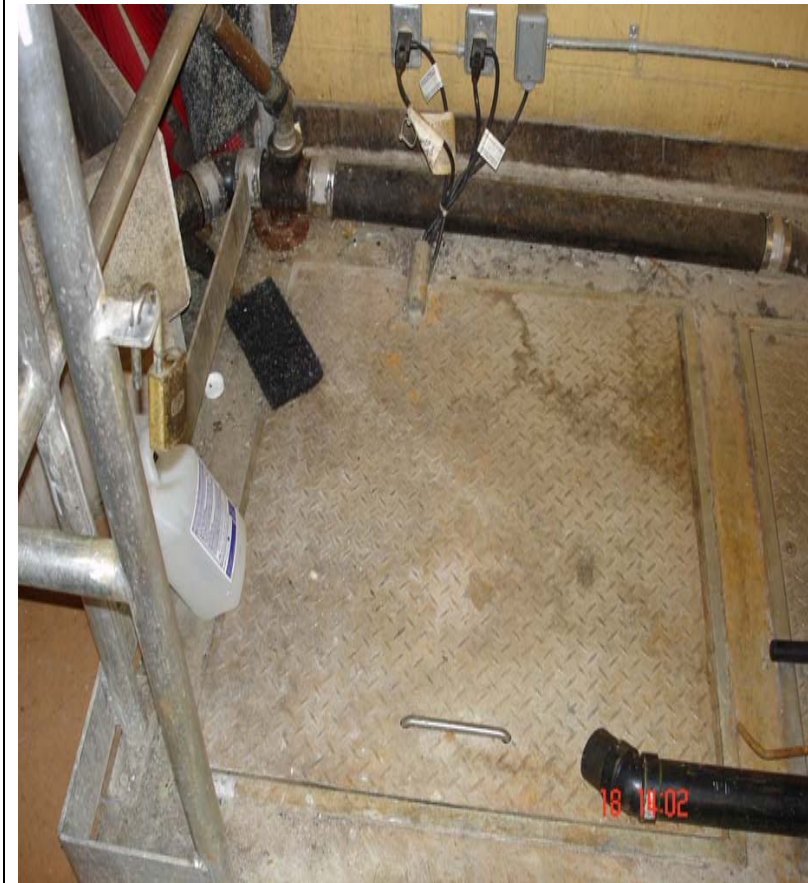


Photo Numbers: 2013 - 06 - 18 (1402)

2013 - 06 - 18 (1402)

List Emergency Procedures:

Assessment Conducted By: _____

Signature: _____

Phone number: _____

Date: _____