

Dalhousie University, Department of Facilities Management

Confined Space Inventory Form

Building: <u>Killam Library C580</u>	Room Number: <u>B600</u>	Date: <u>October 18, 2011</u>
Confined Space No: <u>C580 – B600 – 03</u>	Confined Space Class: _____	
Description of Space: <p align="center"><u>Bilge pump pit.</u></p> Construction Material: <u>Concrete with a steel cover. Smaller observation hatches are set in cover. (See below.)</u> Method of Entry: <u>Climbing down ladder.</u> No. of Access / Egress Points: <u>1</u>		
Dimensions of Access / Egress Opening: Length: <u>0.0 ft. 0.0 inches</u> Width: <u>00.0 inches</u> Depth: Diameter:		
Type of Work Normally Conducted in Space: <u>Servicing of pumps and float switches.</u> Frequency of Work Performance: <u>As required.</u>		
Reference Atmospheric Testing: CO _____ ppm H ₂ S _____ ppm O ₂ _____ % LEL _____ % Other: _____		

Potential Hazards

List all hazards near the access / egress opening(s) or in the confined space that must be controlled to ensure employee safety.

Potential Hazards	Recommended Control Measures
Oxygen Hazard:	
Electrical Hazards: Electrical power to pumps.	Isolate energy sources and lock out.
Mechanical Hazards:	

Physical Hazards:	
Chemicals Hazards:	
Flammables:	
Additional Comments: One smaller hatch set in steel cover 20.0 inches by 18.0 inches.	

Photographs

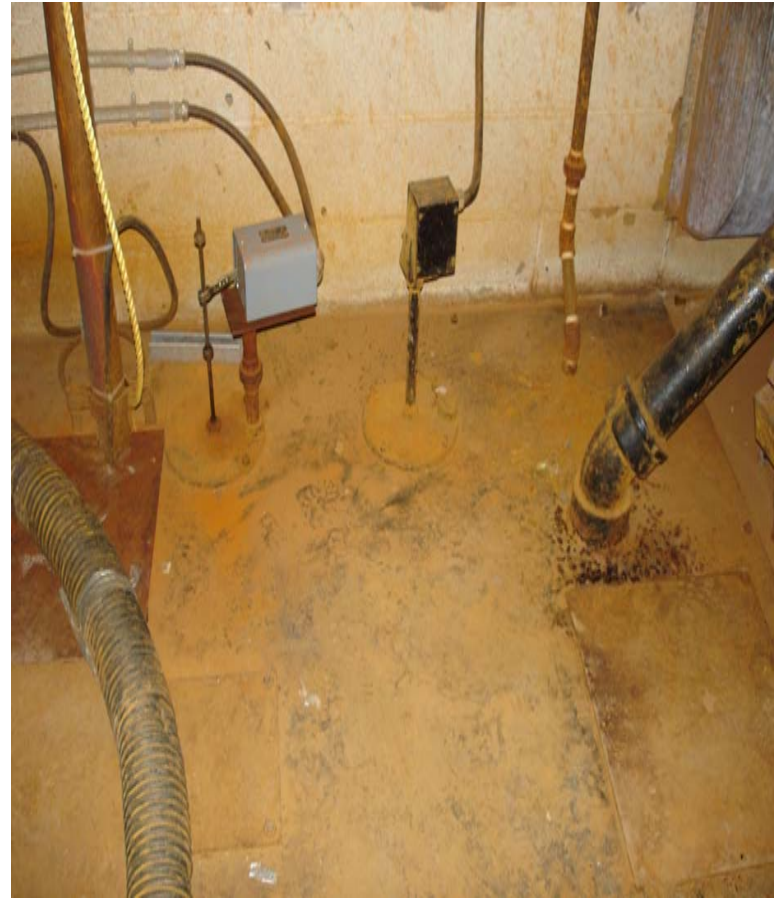


Photo Numbers: 2011 - 10 - 18 - 27 (2:46)



2011 - 10 - 18 - 28 (2:46)

List Emergency Procedures:

Assessment Conducted By: _____

Signature: _____

Phone number: _____

Date: _____