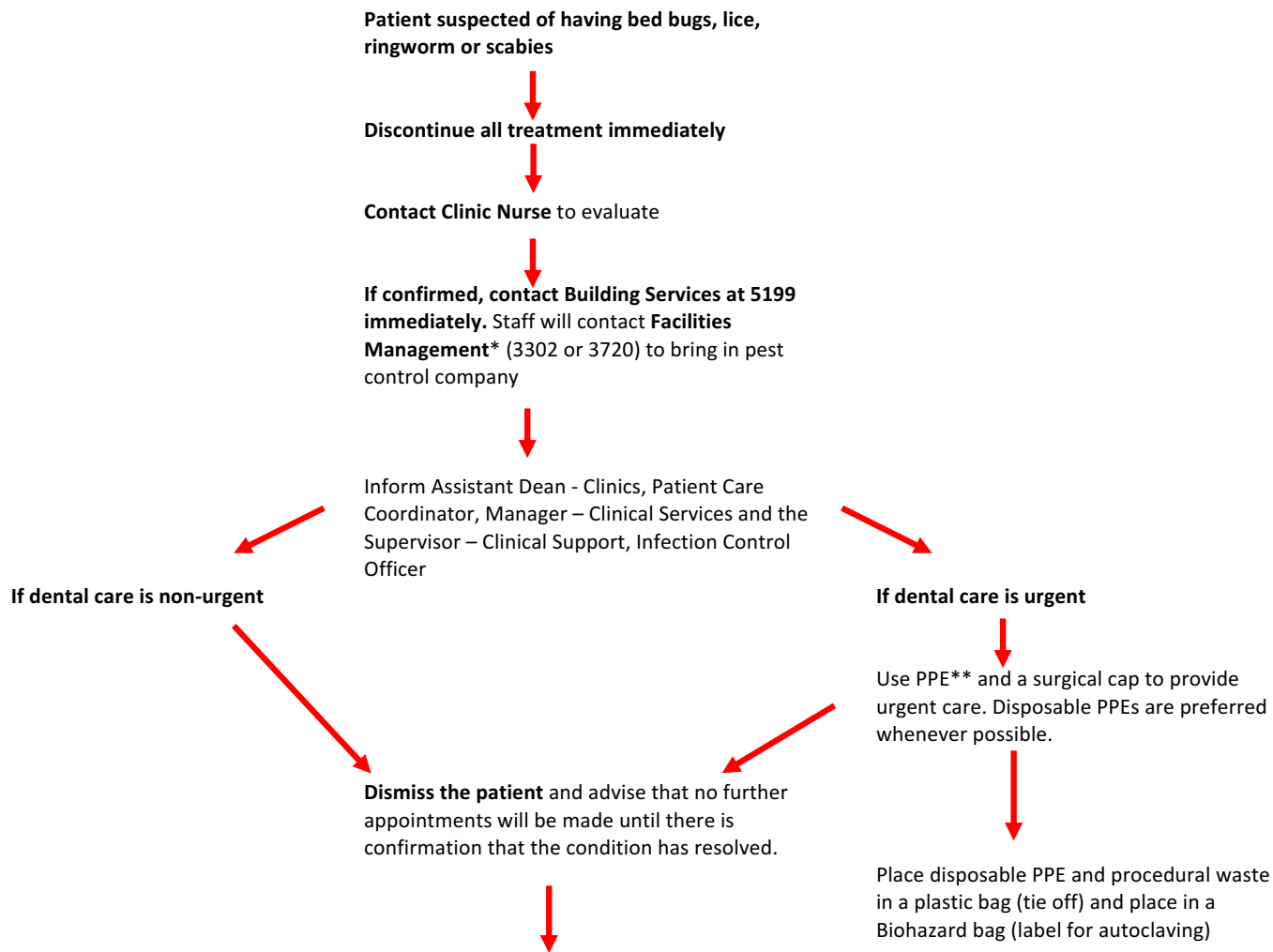


## Management of patients with bed bugs, lice, ringworm or scabies

### Dalhousie University, Faculty of Dentistry Clinics



Anyone who has been exposed to the patient should shower, place clothing in a sealed plastic bag. The contaminated clothing should be washed in hot water and dried for 30 minutes at a medium to high heat setting. Laundered scrubs will be available if a change of clothes is not on site.

All areas known to have been contacted by the patient are to be cordoned off until they have been managed by the pest control company. Place double-sided tape on floor surrounding the chair/area.

\* [Dalhousie University Pest Control Policy](http://www.dal.ca/dept/facilities/services/grounds/pest-management-policy.html) <http://www.dal.ca/dept/facilities/services/grounds/pest-management-policy.html>

#### \*\*PPE – Personal protective equipment

masks, disposable gowns, disposable head covers, gloves

personal clothing (scrubs, gowns, cloth head covers, etc.)

clinic jackets and lab coats

Glasses, loupes

- Dispose of in plastic bag (tie off) and place in labelled Biohazard bag (tie off) to be autoclaved

- Place in a plastic bag (tie off) and launder off site (Hot wash and 30 minutes in a hot dryer cycle)

- Place in a separate plastic bag and biohazard bag and leave outside the clinic jacket room for pick-up by the laundry service.

- Disinfect