

Preliminary Economic Assessment of a Shear Hosted Narrow Vein Cu-Au-Ag Deposit, Cowan Lake, Saskatchewan

PROJECT DESCRIPTION

The Huntress Mining Company have been contracted to complete a preliminary economic assessment on the Cowan Lake zone property in Big River, Saskatchewan for possible gold in a mineralized ore deposit. The study investigated site history, geology, physical environment, infrastructure, site access and socio-economic impacts.

SOCIO-ECONOMIC BENEFITS

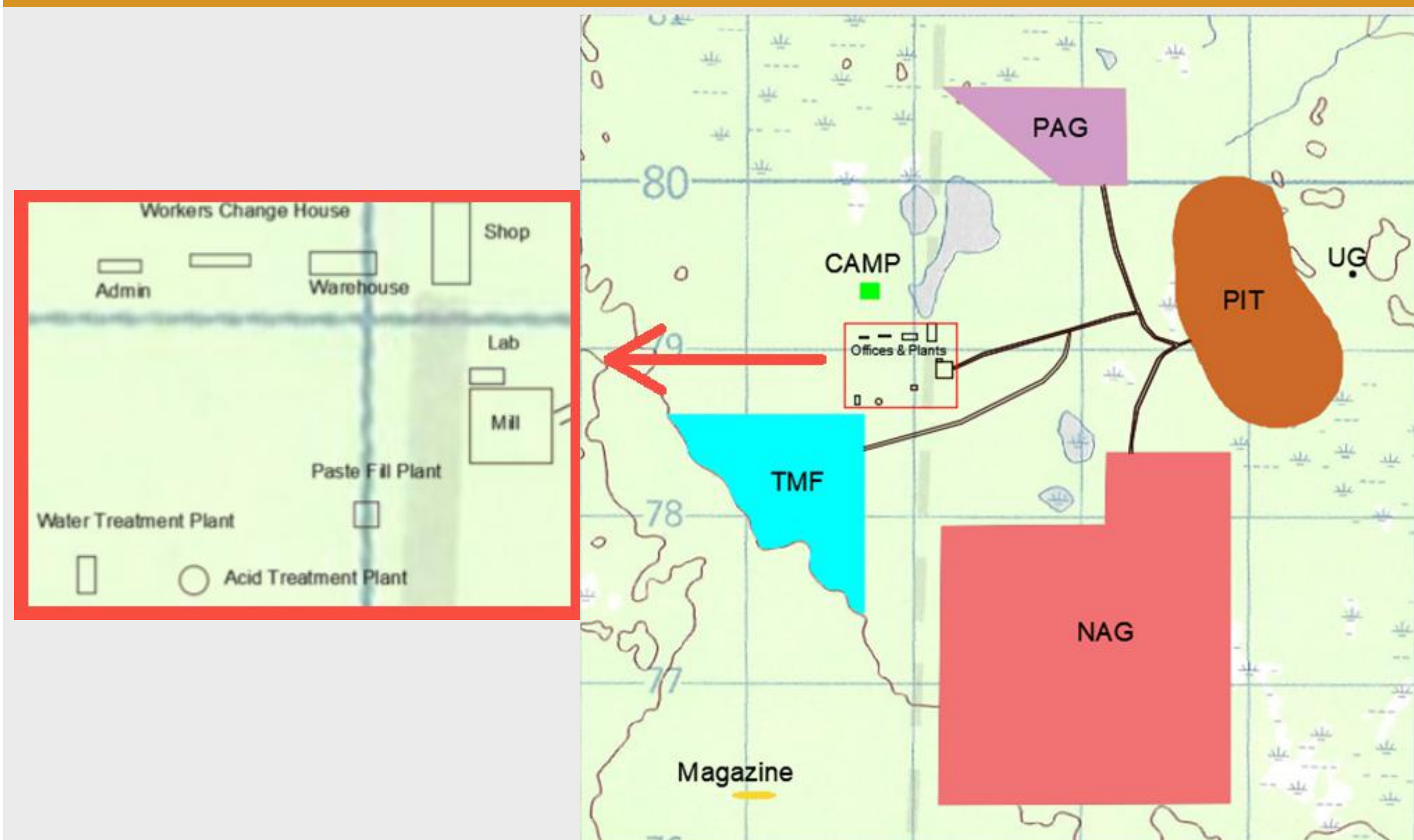
- Hiring 600 total hourly and salary personnel
- Hiring a minimum of 20% from local aboriginal communities
- Training and development programs
- Post-mine development to provide long term opportunities to the local communities

PROJECT LOCATION

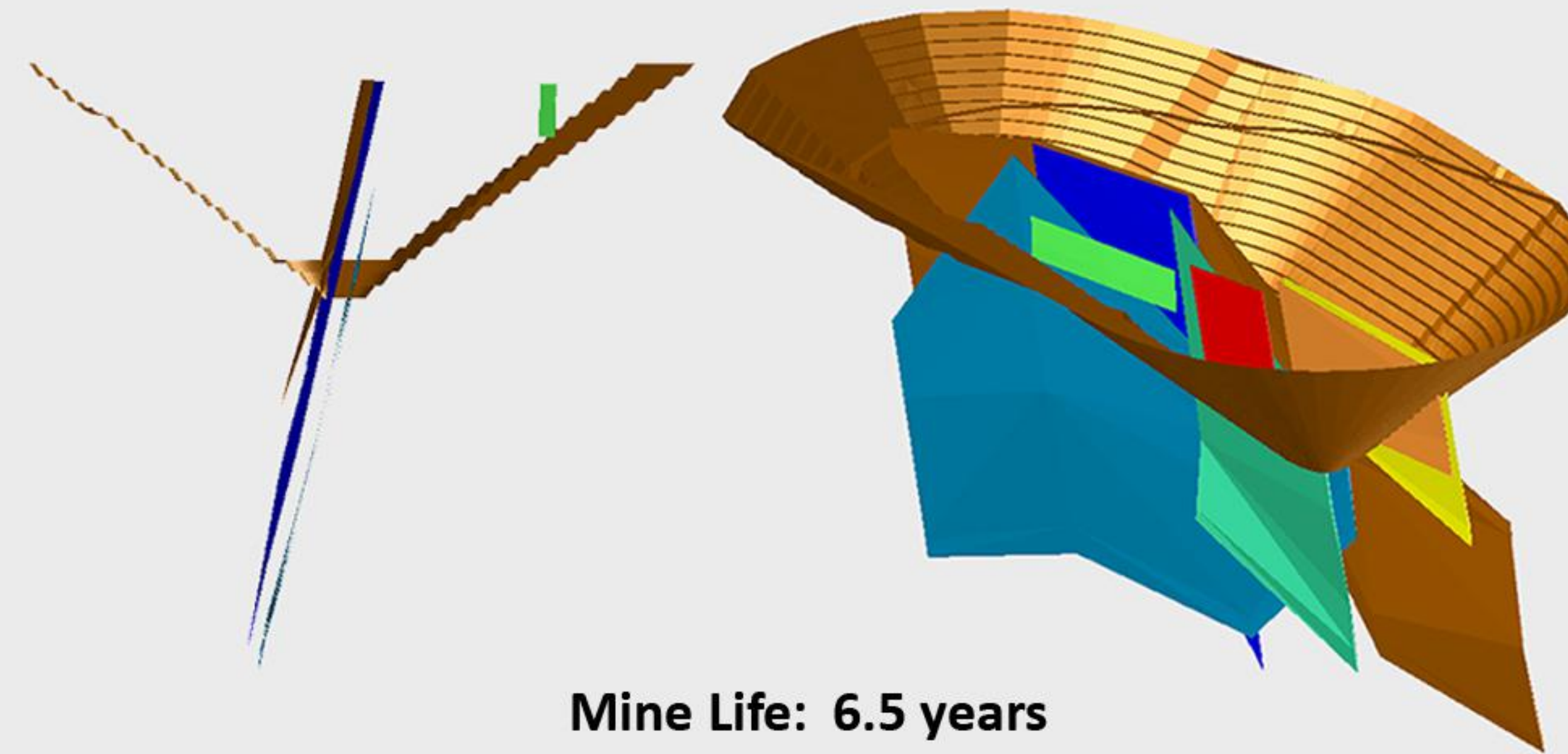


- The Cowan Lake zone is located 300 km north of Saskatoon
- Largest town in proximity is Big River, located 30 km southwest from Cowan Lake zone
- Closest public access roads are 8 km south of the Cowan Lake zone

PROJECT LAYOUT

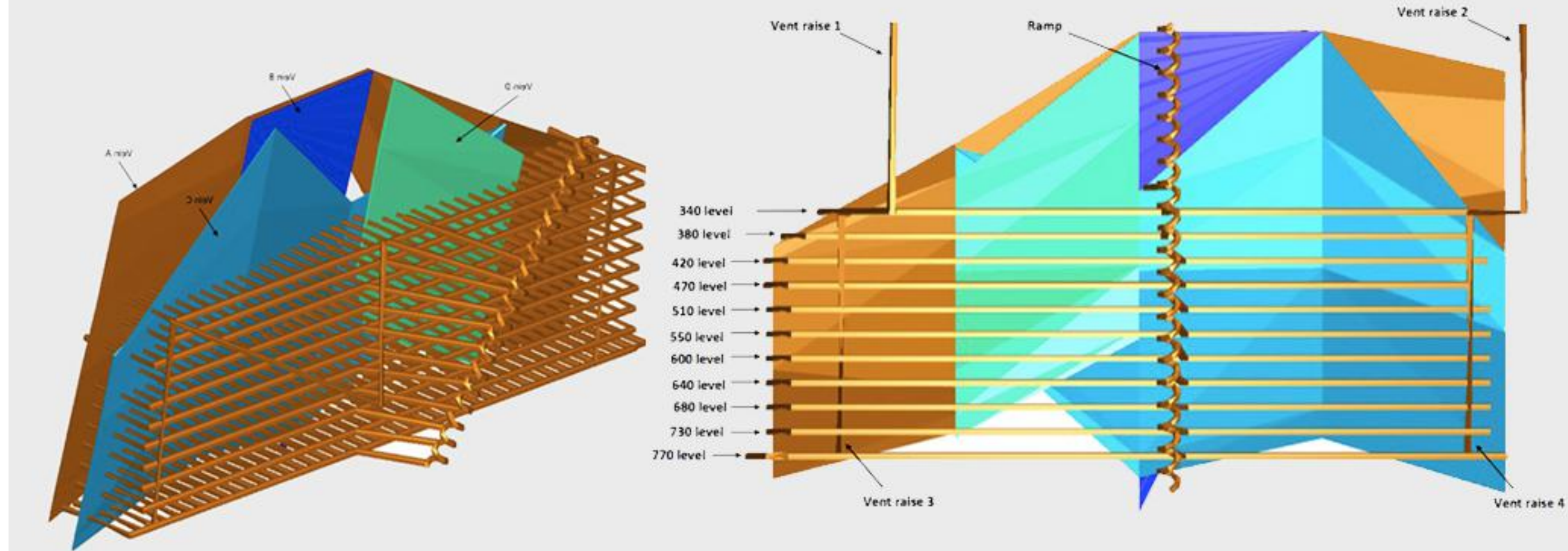


OPEN PIT DESIGN



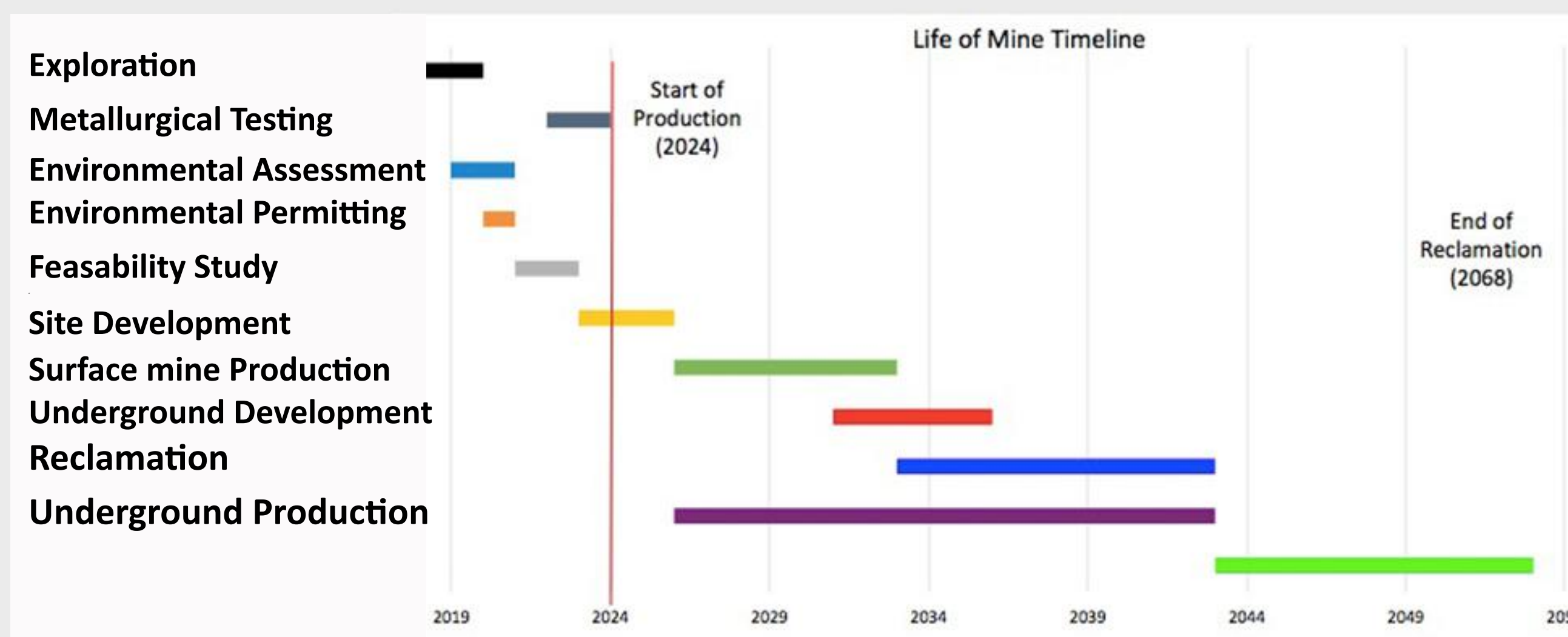
Mine Life: 6.5 years
 Overall Striping Ratio: 15:1
 Total Depth Below Surface: 275 m
 Total Mineable Ore: 3,726,237 tonnes
 Ore daily Production: 2,000 tonnes
 Total daily Production: 32,000 tonnes
 Production Equipment: (15) CAT-772, (4) CAT-349

UNDERGROUND MINE DESIGN



Mine Life: 10.2 years
 Mining Method: Transverse longhole stoping
 Total Mineable Ore: 7,120,000 tonnes

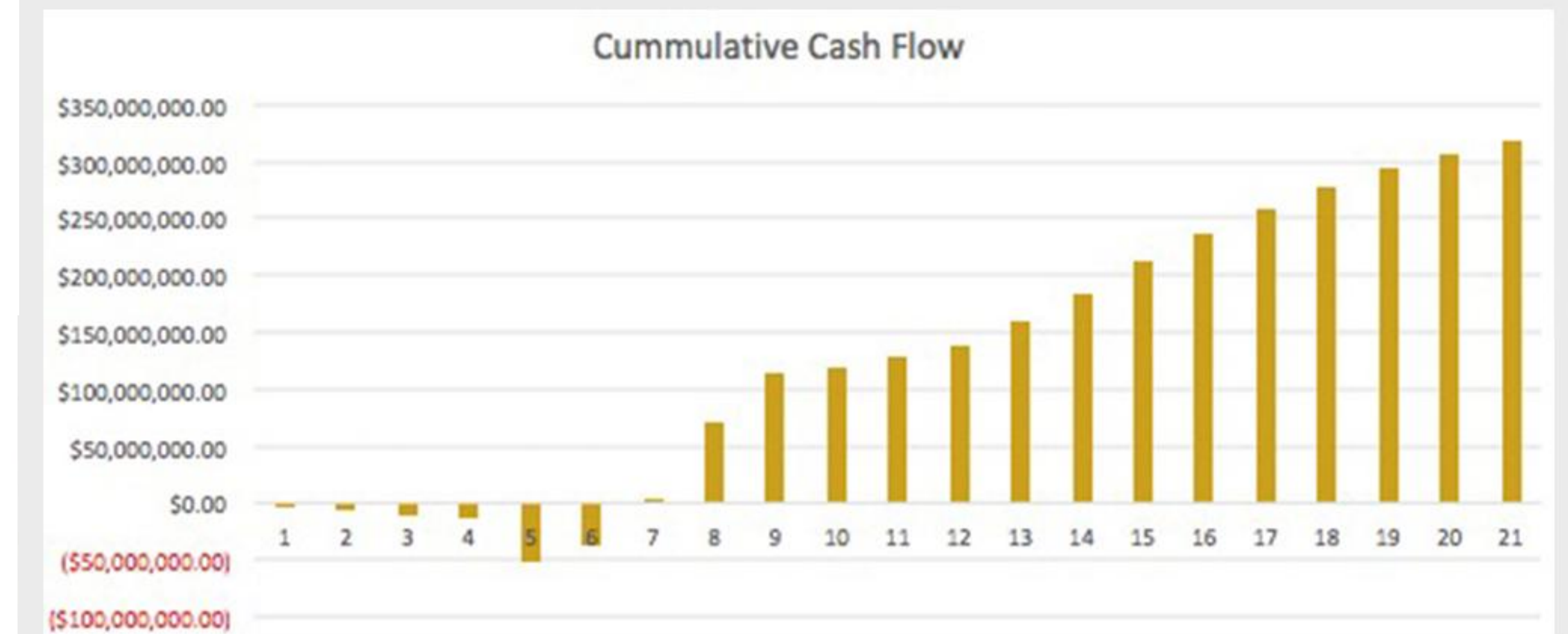
PROJECT TIMELINE



RECLAMATION & CLOSURE

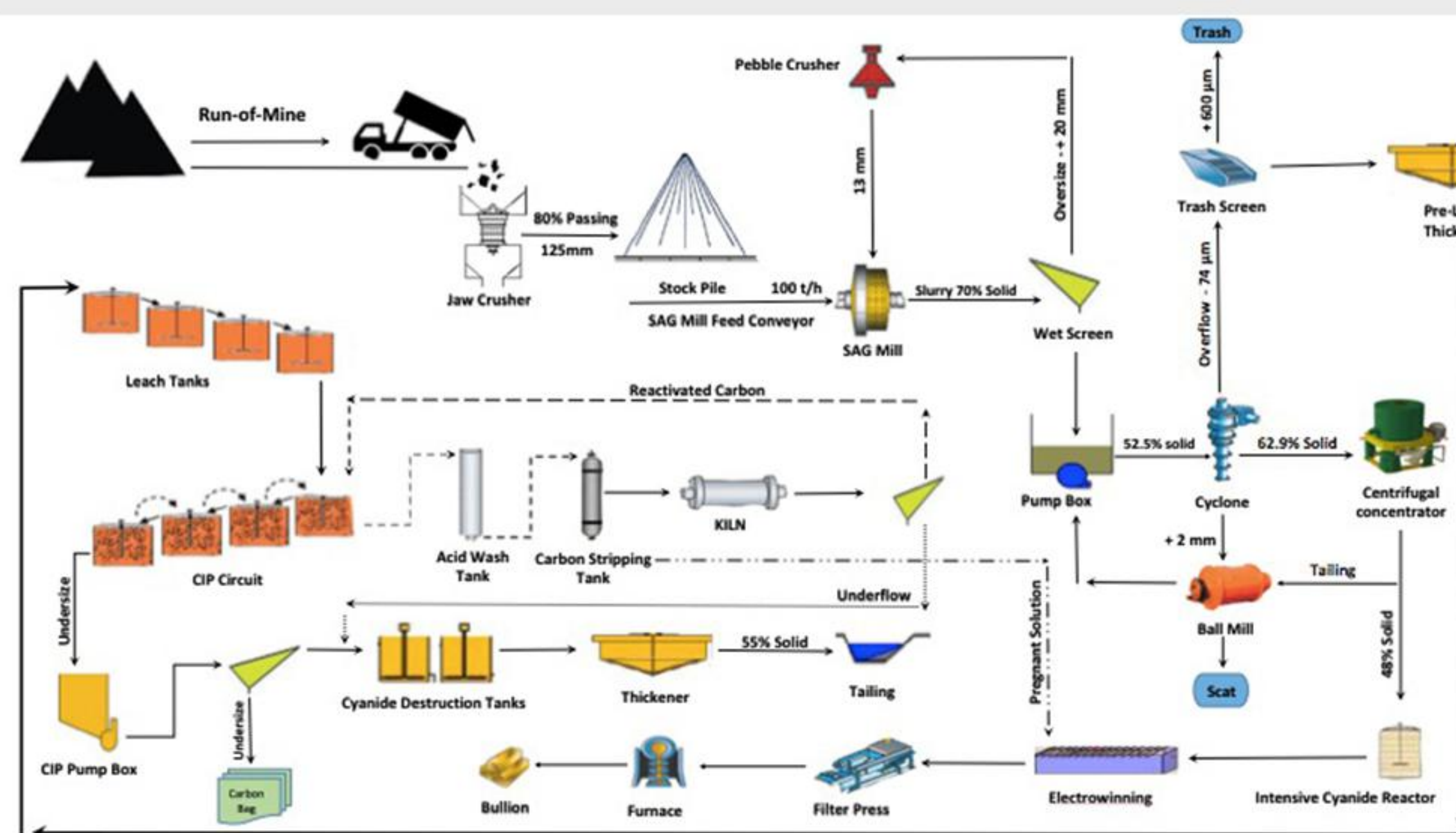
- Open pit mine will be backfilled with waste rock and flooded
- Underground excavations will be backfilled with cemented pastefill
- Decommissioning of buildings, infrastructure and equipment
- Restoration and monitoring of surrounding watercourses will be made suitable for wildlife and aquatic habitat
- Re-vegetation of local plant species

MINE ECONOMICS



- Net Present Value: \$277 Million
- Internal Rate of Return: 15%

MILL DESIGN



REFERENCES

Surveys and Mapping Branch, Department of Energy, Mines, and Resources. (1966). Big River Saskatchewan atlas. Google (n.d.) [Cowan Lake, Saskatchewan]. Retrieved March 30, 2019, from <https://www.google.com/maps/@55.4173426,-110.633646,848682m/data=!3m1!1e3>